



PORTS AND YACHTING DIRECTORATE

Transport Malta

LOCAL NOTICE TO MARINERS NO 17 of 2015

Our Ref: **TM/PYD/22/01/ Vol V**

8 April 2015

Malta Transport Centre
Marsa, MRS 1917
Malta

Tel: (356) 2122 2203
Fax: (356) 2125 0365
Email: info.tm@transport.gov.mt

www.transport.gov.mt

Malta International Fireworks Festival 2015 Fireworks Display in Grand Harbour

The Ports and Yachting Directorate, Transport Malta, notifies mariners that a fireworks display will be held in Grand Harbour on Thursday, 30 April 2015.

Fireworks will be let off from barges and pontoons placed off St Angelo Point. The Barges will be placed in position, on Thursday, 30 April 2015, morning, and will be removed when the display finishes. Two (2) sinkers with marker buoys will be placed in positions Y and Z on Thursday 30 April 2015 between 1200 and 1400, while the pontoons will then be placed on Thursday, 30 April 2015 after 1615 and removed immediately after the displays. A copy of part BA Chart 177 showing arrangement of barges and pontoons is attached.

Schedule of the fireworks is as follows:

Thursday 30 April 2015 from 2100 hrs till 2330 hrs local Time (1900 hrs and 2130 hrs UTC)

In view of the above, mariners are informed that part of Grand Harbour (as shown on chart) will be closed to all vessels as follows:

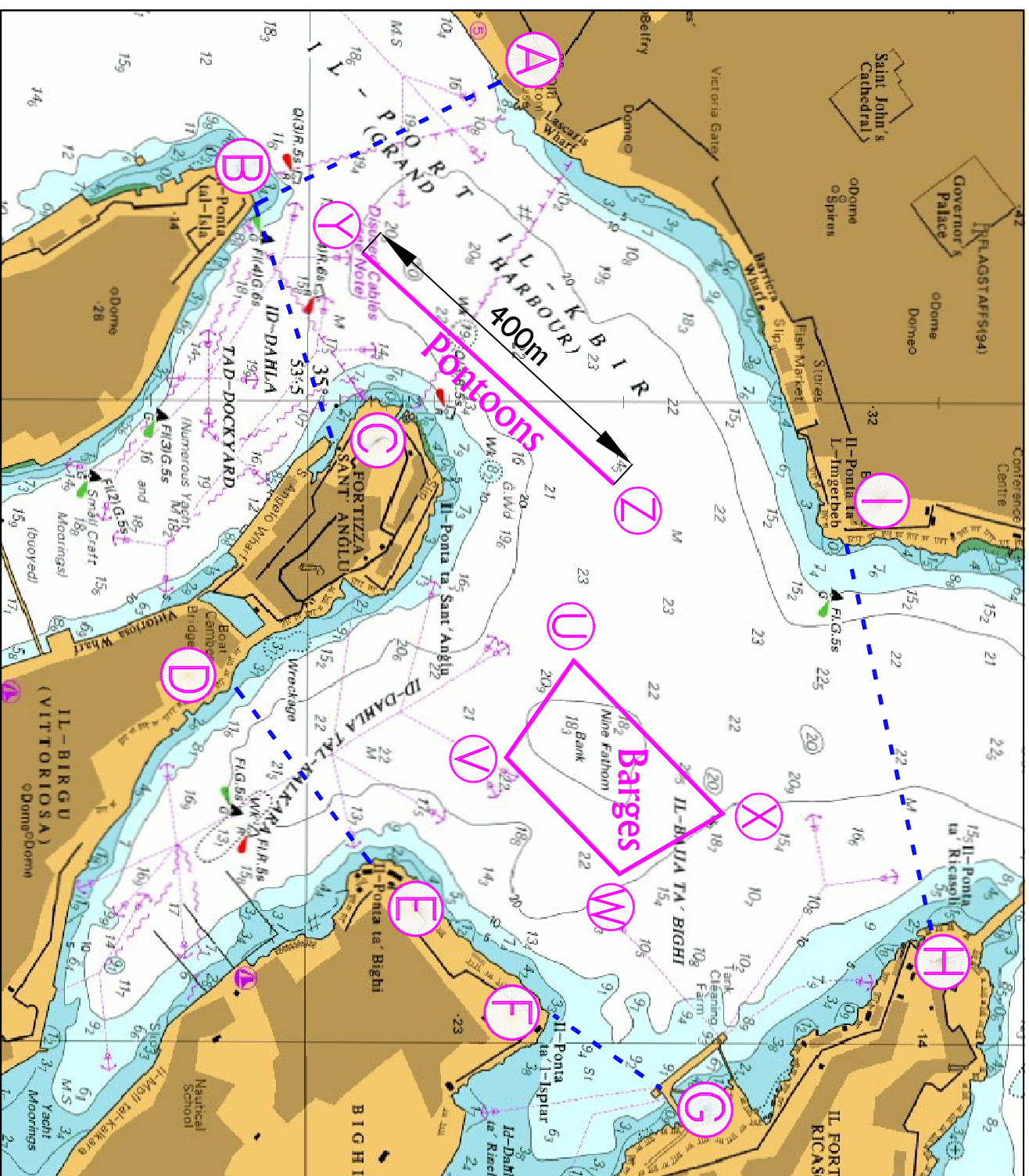
Thursday 30 April 2015 from 1615 hrs till 2355 hrs

Imaginary lines bind the restricted area between the points A - B, B - C, D - E, F - G and H - I as shown on the attached chart. The barges and pontoons are to be given a wide berth at all times.

During the event shipping movements in Grand Harbour will be restricted. No vessel will be allowed within the restricted area, except by arrangement through the Organising Committee. Authorised craft are to give the display barges a wide berth of at least 200m at all times. No movements whatsoever will be allowed during the actual displays.

Mariners are to comply with instructions and directions issued by Valletta Port Control (Valletta VTS) on VHF Channel 12, Police, patrol boats and Transport Malta Enforcement that will be in the area.

Chart Affected: BA 177



©British Crown Copyright 1970, 1983, 1986, 1988, 1999, 2000.
All rights reserved

The UK Hydrographic Office makes the accompanying data available to Transport Malta under the terms and conditions of agreement HD 1427/020930/01.

DISCLAIMER

Whilst the UK Hydrographic Office has endeavoured to ensure that the material supplied is suitable for the purpose described, it accepts no liability (to the maximum extent permitted by law) for any damage or loss of any nature arising from its use. The material supplied is used entirely at the Recipient's own risk.

Area For Barges

U	35°	53',667	014°	31',201
V	35°	53',625	014°	31',276
W	35°	53',697	014°	31',367
X	35°	53',762	014°	31',319

Line Of Pontoons

Y	35° 53' 53.2	014° 30' 88.4
Z	35° 53' 69.2	014° 31' 06.4