



PORTS AND YACHTING DIRECTORATE

Transport Malta

LOCAL NOTICE TO MARINERS No 03 of 2015

Our Ref: TM/PYD/95/96

Malta Transport Centre
Marsa, MRS 1917
Malta

Tel: (356) 2122 2203
Fax: (356) 2125 0365
Email: info.tm@transport.gov.mt

22 January 2015

www.transport.gov.mt

Drilling Works for Geotechnical Investigations at Sliema Creek, Marsamxett Harbour.

The Ports and Yachting Directorate, Transport Malta, notifies mariners that drilling works for geotechnical investigations will be carried out in Sliema Creek, off Manoel Island bridge in Marsamxett Harbour along an imaginary line AB as shown on attached chart.

Weather permitting the works are expected to commence on Thursday 29th January 2015 and completed by Saturday 7th February 2015.

They will be carried out from a flat barge which will be accompanied by a small tug boat. The barge may deploy anchors to hold it in position and may remain in the area during the night. The Barge will display the signals in accordance with the International Collisions Regulations

In view of the above all vessels, moorings and ground tackle that are in the vicinity of the indicated line AB must be removed by Wednesday 28th January 2015 in order that the flat barge and tugboat may carry out the mentioned work.

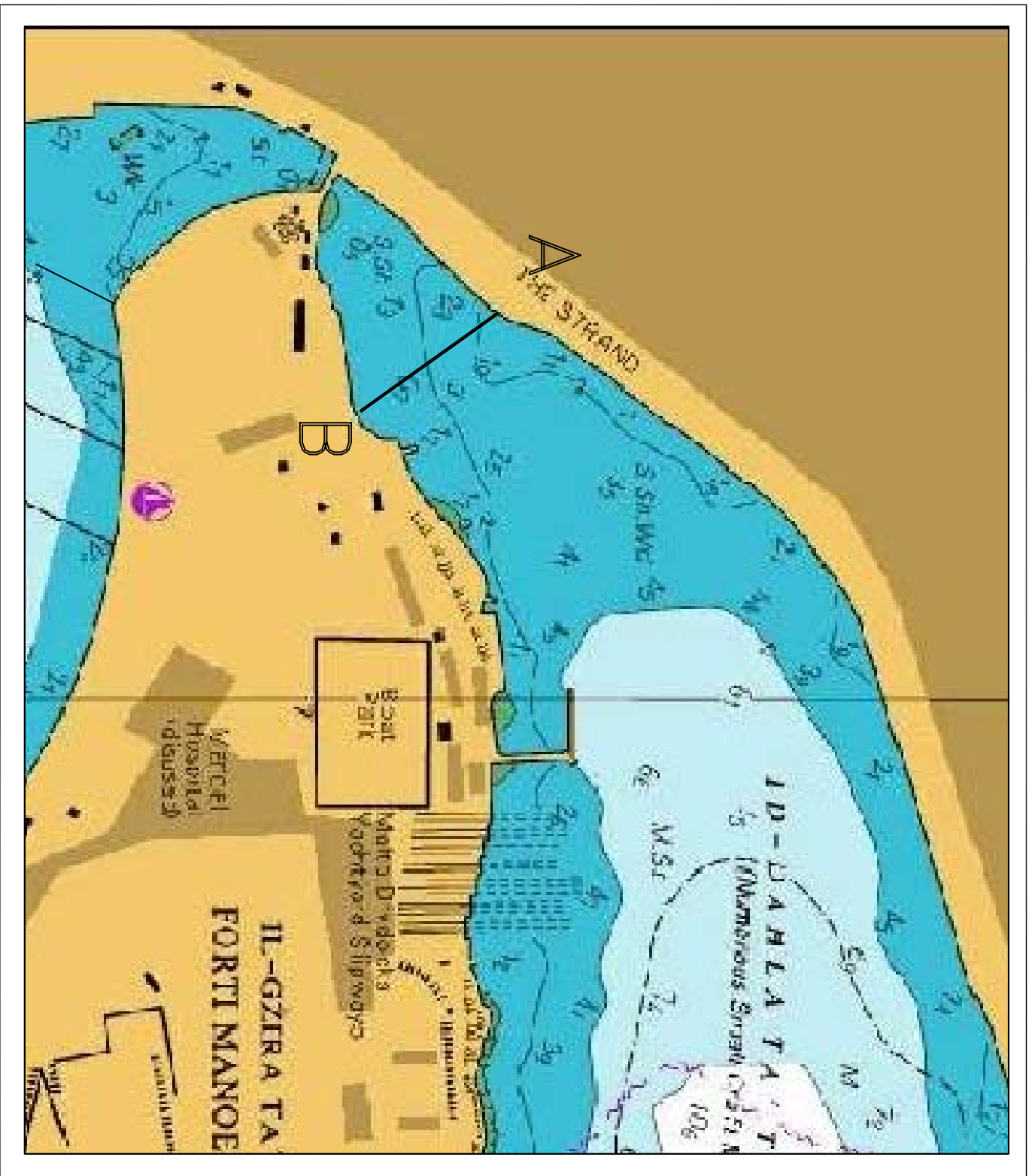
No liability will be accepted for any vessel, mooring and ground tackle that are left in the area and may be damaged after the stipulated date. Masters of vessels that lie in the vicinity of the area are to cooperate with the contractor to facilitate this work.

Further more mariners and operators of vessels are advised to keep a sharp lookout and proceed at very slow speed.

Instructions given by Valletta Port Control (VTS) on VHF Channel 12 are to be complied with.

Chart affected: BA 177

Positions referred to WGS 84 DATUM.



©British Crown Copyright 1970, 1983, 1986, 1988, 1999, 2000.
All rights reserved

The UK Hydrographic Office makes the accompanying data available to Transport Malta under the terms and conditions of agreement HD 1427/020930/01.

DISCLAIMER

Whilst the UK Hydrographic Office has endeavoured to ensure that the material supplied is suitable for the purpose described, it accepts no liability (to the maximum extent permitted by law) for any damage or loss of any nature arising from its use. The material supplied is used entirely at the Recipient's own risk.