



PORTS AND YACHTING DIRECTORATE

Transport Malta

LOCAL NOTICE TO MARINERS No 66 OF 2014

Our Ref: TM/PYD/63/00

10 September 2014

Malta Transport Centre
Marsa, MRS 1917
Malta

Tel: (356) 2122 2203
Fax: (356) 2125 0365
Email: info.tm@transport.gov.mt

www.transport.gov.mt

Marine Surveys at the East and South east Coast of Malta

The Ports and Yachting Directorate, Transport Malta notifies Mariners that marine surveys will be carried out east and south east of Malta and in the area A, B, C, D, E, F, G and the intermediate coastline as shown on the attached chart.

	LATITUDE (N)	LONGITUDE (E)
A	036° 01'.14	014° 20'.36
B	036° 04'.54	014° 24'.92
C	035° 53'.50	014° 43'.06
D	035° 47'.91	014° 43'.19
E	035° 47'.85	014° 36'.00
F	035° 48'.05	014° 33'.41
G	035° 49'.11	014° 33'.75

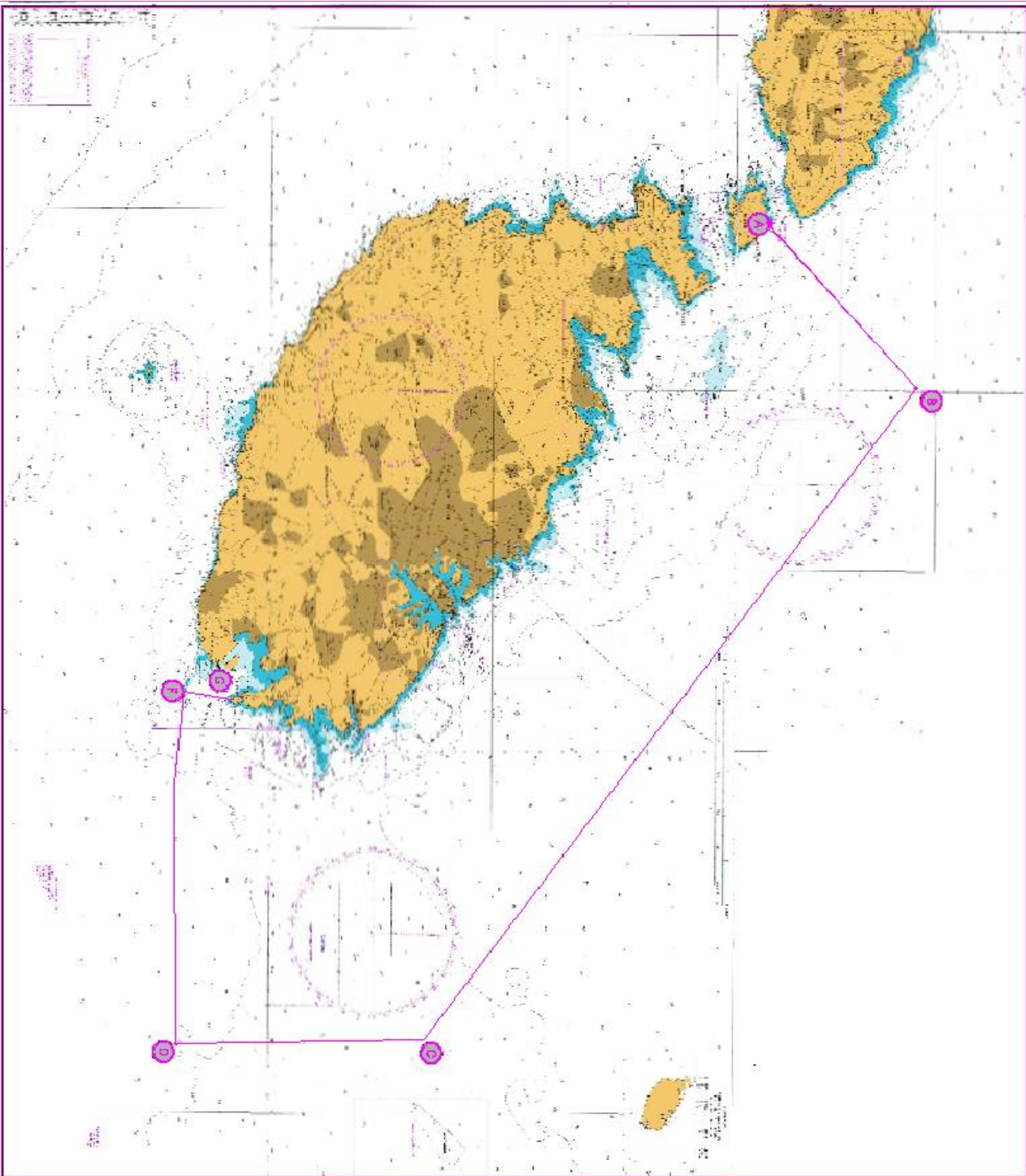
The surveys will start on Saturday 13 September 2014 and estimated to last three weeks (weather permitting).

The Research Vessel Hercules will be used for this operation and will be towing a cable of 100m.

Mariners are to note the above and give the vessel a wide berth of 500 m when sighted. Any instructions issued by Valletta Port Control (Valletta VTS) are to be adhered to.

Positions referred to WGS 84 DATUM

Chart Affected BA, 2537, 2538, 194



British Crown Copyright 1970, 1983, 1986, 1988, 1989, 1999, 2000.
All Rights Reserved

The UK Hydrographic Office makes the accompanying data available to Transport Malta under the terms and conditions of agreement HD 1427/080930/01.

Whilst the UK Hydrographic Office has endeavoured to ensure that the material supplied is suitable for the purpose described, it accepts no liability (to the maximum extent permitted by law) for any damage or loss of any nature arising from its use. The material supplied is used entirely at the Recipient's own risk.