



PORTS AND YACHTING DIRECTORATE

Transport Malta

LOCAL NOTICE TO MARINERS No 62 of 2014

Our Ref: TM/PYD/63/95 Vol VI

28 August 2014

Malta Transport Centre
Marsa, MRS 1917
Malta

Tel: (356) 2122 2203
Fax: (356) 2125 0365
Email: info.tm@transport.gov.mt

www.transport.gov.mt

Drilling Works for Geotechnical Investigations off Delimara Power Station, Marsaxlokk.

The Ports and Yachting Directorate, Transport Malta, notifies mariners that drilling works for geotechnical investigations will be carried out off the Delimara Power Station in Marsaxlokk Harbour.

These works will be carried in the area W, X, Y, Z and the intermediate coastline as shown on the attached chart and in approximate positions:

	LATITUDE (N)	LONGITUDE (E)
W	35° 49.892'	14° 33.283'
X	35° 49.892'	14° 33.154'
Y	35° 49.573'	14° 33.156'
Z	35° 49.574'	14° 33.404'

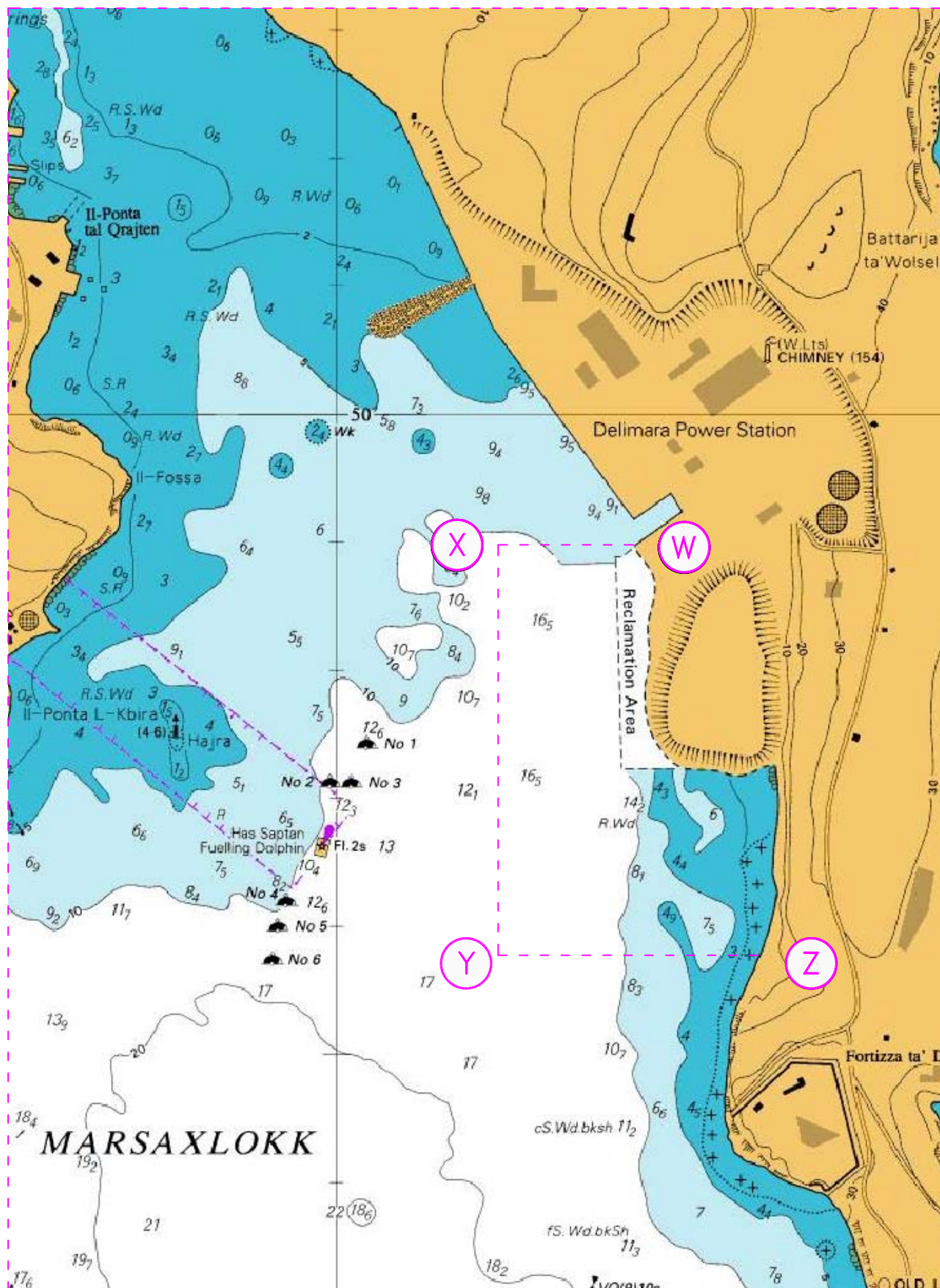
Weather permitting the works are expected to commence with immediate effect and completed by Friday 26 September 2016.

They will be carried out from a flat barge which will be accompanied by a small tug boat. The barge may deploy anchors to hold it in position and may remain in the area during the night. The Barge will display the signals in accordance with the Collisions Regulations. Further more mariners and operators of vessels are advised to keep a sharp lookout, proceed at very slow speed and give the above area a wide berth of at least 300 meters.

Instructions given by Marsaxlokk Port Control (VTS) on VHF Channel 14 are to be complied with.

Chart affected: BA 36

Positions referred to WGS 84 DATUM.



©British Crown Copyright 1970, 1983, 1986, 1988, 1999, 2000.
All rights reserved

The UK Hydrographic Office makes the accompanying data
available to Transport Malta under the terms and
conditions of agreement HD 1427/020930/01.

DISCLAIMER

Whilst the UK Hydrographic Office has endeavoured to ensure
that the material supplied is suitable for the purpose described,
it accepts no liability (to the maximum extent permitted by law)
for any damage or loss of any nature arising from its use.
The material supplied is used entirely at the Recipient's own risk.