



Transport Malta

Malta Transport Centre
Marsa, MRS 1917
Malta

Tel: (356) 2122 2203
Fax: (356) 2125 0365
Email: info.tm@transport.gov.mt

www.transport.gov.mt

PORTS AND YACHTING DIRECTORATE

LOCAL NOTICE TO MARINERS NO 49 of 2014

Our Ref: TM/PYD/26/94/1

31 July 2014

Firework Displays in Grand Harbour

The Ports and Yachting Directorate, Transport Malta, notifies that firework displays will be let off from Bighi shore (as shown on attached chart) and also from barges moored 200m and 340m off Bighi Point on the following dates and times:-

Bighi shore:

Friday 1 August 2014	At 1945 hrs till 2000 hrs
Saturday 2 August 2014	At 1945 hrs till 2000 hrs
Sunday 3 August 2014	At 1945 hrs till 2000 hrs
Monday 4 August 2014	At 1945 hrs till 2000 hrs
Tuesday 5 August 2014	At 1945 hrs till 2000 hrs
Wednesday 6 August 2014	At 1945 hrs till 2000 hrs

Bighi shore/Barges:

Friday 8 August 2014	At 0800 hrs till 0815 hrs, from 1200 hrs till 1215 hrs and between 2015 hrs and 2130 hrs
Saturday 9 August 2014	From 0900 hrs till 0945 hrs, from 1200 hrs till 1230 hrs, from 1830 hrs till 1900 hrs and from 2200 hrs till 2330 hrs
Sunday 10 August 2014	From 0800 hrs till 0830 hrs, from 1200 hrs till 1230 hrs and from 1900 hrs till 2330 hrs

Barges:

The barges to be used for firework displays Bezz VIII and B 45 shall be moored on Thursday 7 August, 2014 in the following positions:

	LATITUDE (N)	LONGITUDE (E)
Y	35°53'.632	14°31'.281
Z	35°53'.669	14°31'.207



Transport Malta

Malta Transport Centre
Marsa, MRS 1917
Malta

Tel: (356) 2122 2203
Fax: (356) 2125 0365
Email: info.tm@transport.gov.mt

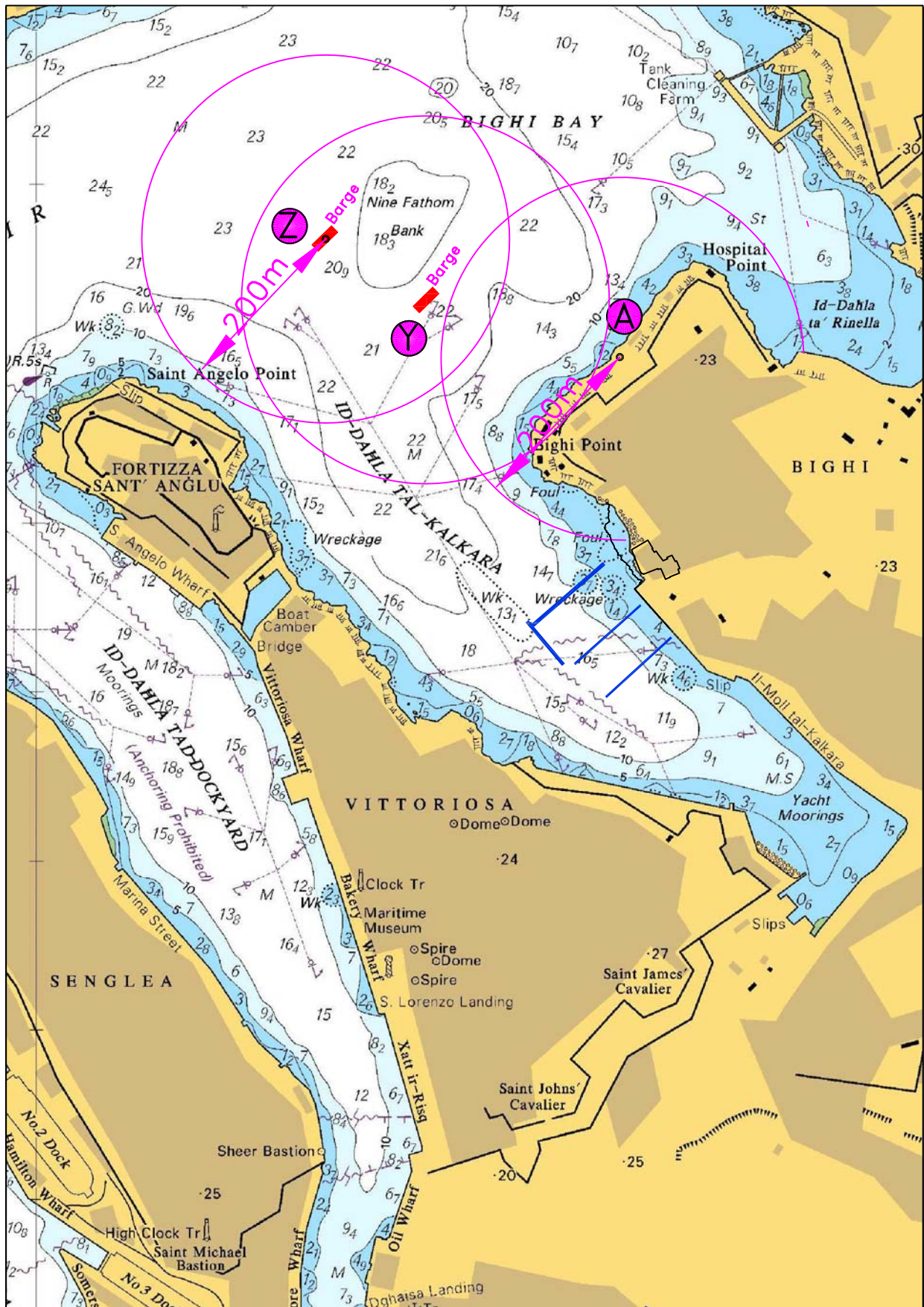
www.transport.gov.mt

The barges will be removed on Monday 11th August 2014.

A wide berth of 200 meters is requested from Bighi Shore and from the position of the barges on the days indicated above as the Bighi shore barges will be loaded with fireworks. Mariners are to navigate with caution and slow speed. Instructions and directions given by Valletta Port Control (Valletta VTS) are to be complied with.

Chart affected BA Chart 177.

Positions are referred to WGS 84 Datum.



© British Crown Copyright 1970, 1983, 1986, 1988, 1999, 2000.
All rights reserved

The UK Hydrographic Office makes the accompanying data available to Transport Malta under the terms and conditions of agreement HD 1427/020930/01.

DISCLAIMER

Whilst the UK Hydrographic Office has endeavoured to ensure that the material supplied is suitable for the purpose described, it accepts no liability (to the maximum extent permitted by law) for any damage or loss of any nature arising from its use. The material supplied is used entirely at the Recipient's own risk.