



PORTS AND YACHTING DIRECTORATE

Transport Malta

## LOCAL NOTICE TO MARINERS NO 20 OF 2014

Our Ref: TM/PYD/42/08

Malta Transport Centre  
Marsa, MRS 1917  
Malta

Tel: (356) 2122 2203  
Fax: (356) 2125 0365  
Email: [info.tm@transport.gov.mt](mailto:info.tm@transport.gov.mt)

22 May 2014

[www.transport.gov.mt](http://www.transport.gov.mt)

### St. Paul's Bay Powerboat Races

The Ports and Yachting Directorate, Transport Malta notifies mariners that a power boat race will be held in St. Paul's Bay on Saturday, 31 May 2014 and Sunday 1 June 2014, weather permitting.

Buoys will be laid in the following positions A, B, C, D, E, F and G for the super sport category as indicated on chart A attached:

POSITION	LATITUDE (N)	LONGITUDE (E)
A	35° 57'.107	14° 23'.603
B	35° 57'.366	14° 24'.688
C	35° 57'.703	14° 25'.166
D	35° 57'.890	14° 25'.517
E	35° 57'.865	14° 24'.675
F	35° 57'.590	14° 24'.457
G	35° 57'.171	14° 23'.554

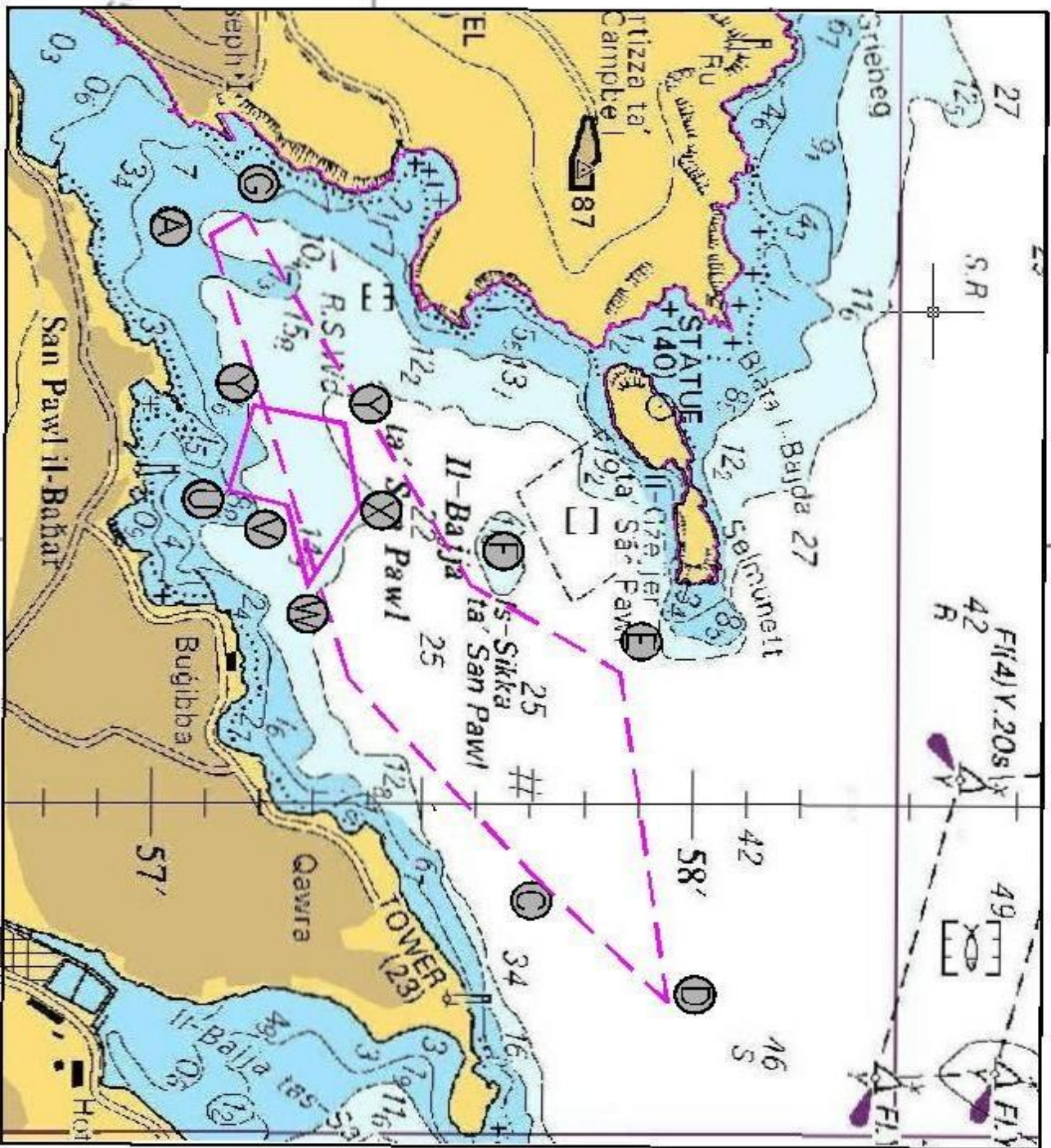
And for the cyber and mini cat races in positions

U	35° 57'.146	14° 24'.236
V	35° 57'.263	14° 24'.280
W	35° 57'.303	14° 24'.492
X	35° 57'.422	14° 24'.301
Y	35° 57'.394	14° 24'.081
Z	35° 57'.198	14° 24'.029

The timings of the race will be between 1000 hours and 1800 hours local time.

Mariners are instructed not to cross the course on the mentioned dates and times stated above and that they are to give the indicated course a wide berth. Navigation within St Paul's Bay will be restricted during the race. Mariners are to follow instructions given by Valletta VTS (Valletta Port Control) and support safety craft in the area.

Charts Affected: BA 194, 211A, 2537 and 2538



© British Crown Copyright 1970, 1983, 1986, 1988, 1989, 1991. All rights reserved.

The UK Hydrographic Office makes the accompanying data available to Transport Malta under the terms and conditions of agreement HD 1427/100920/01.

**DISCLAIMER**

Whilst the UK Hydrographic Office has endeavoured to ensure that the material supplied is suitable for the purpose described, it accepts no liability for the maximum extent permitted by law for any damage or loss of any nature arising from its use. The material supplied is issued without any warranty, express or implied.

Chart A