



PORTS AND YACHTING DIRECTORATE

Transport Malta

LOCAL NOTICE TO MARINERS NO 13 of 2014

Our Ref: **TM/PYD/22/01/ Vol V**

17 April 2014

Malta Transport Centre
Marsa, MRS 1917
Malta

Tel: (356) 2122 2203
Fax: (356) 2125 0365
Email: info.tm@transport.gov.mt

www.transport.gov.mt

Malta International Fireworks Festival 2014 Fireworks Display in Grand Harbour

The Ports and Yachting Directorate, Transport Malta, notifies mariners that a fireworks display will be held in Grand Harbour on Wednesday, 30 April 2014.

Fireworks will be let off from a barge and pontoons placed off St Angelo Point. The Barge will be placed in position, on Wednesday, 30 April 2014, morning, until Thursday, 1 May 2014, morning. The pontoons will be placed on Wednesday afternoon after 1600hrs and removed immediately after the displays. Another barge will be placed closer to shore which will contain the lighting equipment. A copy of part BA Chart 177 showing arrangement of barges and pontoons is attached.

Schedule of the fireworks is as follows:

Wednesday 30 April 2014 from 2330 hrs till 0030 hrs local Time (2130 hrs and 2230 hrs UTC)

In view of the above, mariners are informed that part of Grand Harbour (as shown on chart) will be closed to all vessels as follows:

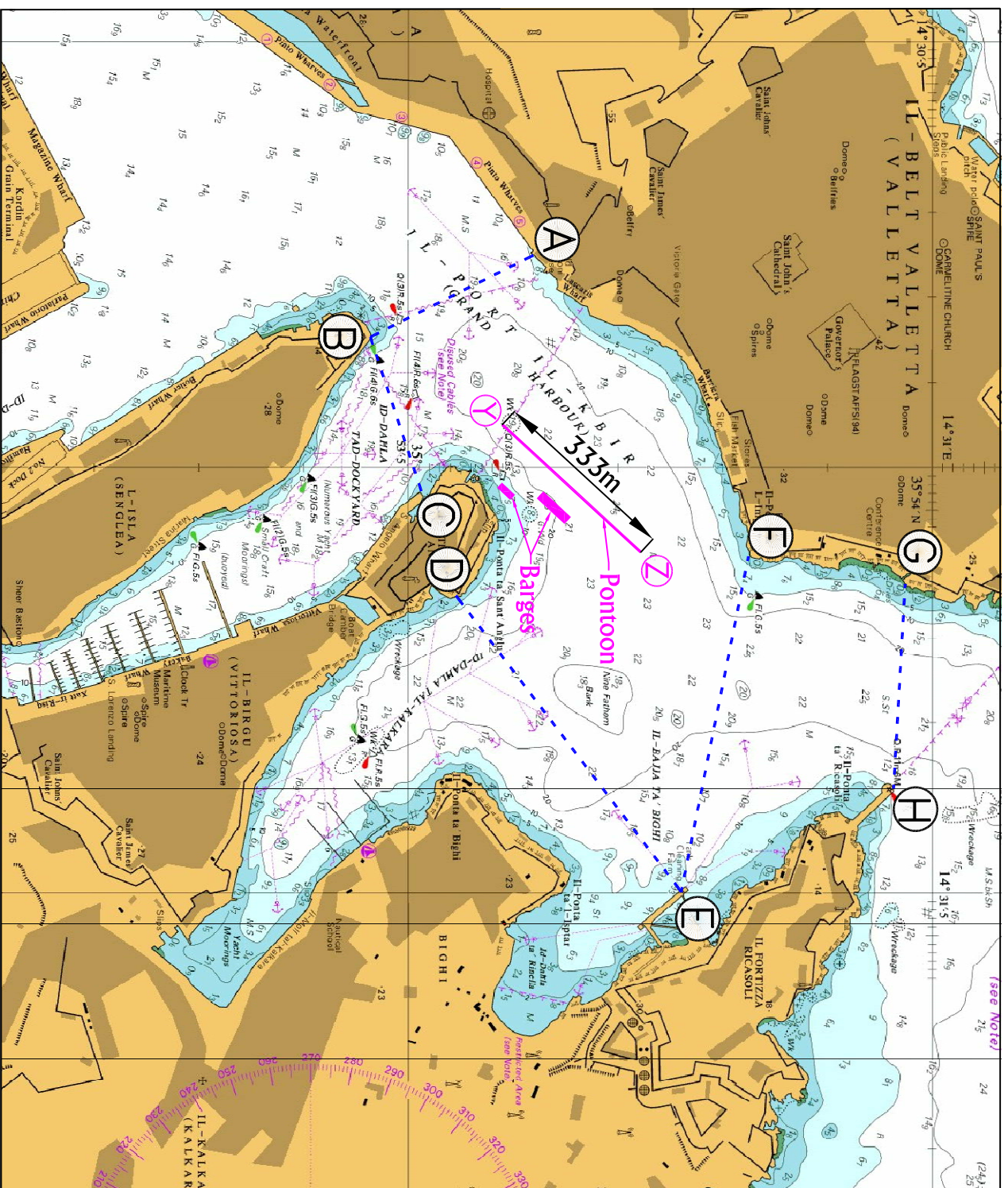
Wednesday 30 April 2013 from 1600hrs till 0100 hrs of the 1st May 2014.

Imaginary lines bind the restricted area between the points A - B, B - C, D - E, E - F and G - H as shown on the attached chart. The barge and pontoons are to be given a wide berth at all times.

During the event shipping movements in Grand Harbour will be restricted. No vessel will be allowed within the restricted area, except by arrangement through the Organising Committee. Authorised craft are to give the display barges a wide berth of at least 200m at all times. No movements whatsoever will be allowed during the actual displays.

Mariners are to comply with instructions and directions issued by Valletta Port Control (Valletta VTS) on VHF Channel 12, Police, patrol boats and Transport Malta Enforcement that will be in the area.

Chart Affected: BA 177



Ports & Yachting Directorate
Transport Malta
Malla Transport Centre
Katt L-Għassara ta' L-Għeneb
Marsa, MRS 1917

Tel. 2122 2203
Fax. 2122 2208
Email: info@transport.gov.mt
www.transport.gov.mt

Centre Of Barge

35° 53'.641 014° 31'.047

Line Of Pontoon

Y	35° 53'.591	014° 30'.950
Z	35° 53'.724	014° 31'.099

©British Crown Copyright 1970, 1983, 1986, 1988, 1999, 2000.
All rights reserved
The UK Hydrographic Office makes the accompanying data available to Transport Malta under the terms and conditions of agreement HD 1427/020930/01.

DISCLAIMER

Whilst the UK Hydrographic Office has endeavoured to ensure that the material supplied is suitable for the purpose described, it accepts no liability (to the maximum extent permitted by law) for any damage or loss of any nature arising from its use. The material supplied is used entirely at the Recipient's own risk.