



PORTS AND YACHTING DIRECTORATE

Transport Malta

LOCAL NOTICE TO MARINERS NO 10 of 2014

Malta Transport Centre
Marsa, MRS 1917
Malta

Our Ref: TM/PYD/111/92

Tel: (356) 2122 2203
Fax: (356) 2125 0365
Email: info.tm@transport.gov.mt

14 April 2014

www.transport.gov.mt

Blue Lagoon, Comino: Swimmers' Zone

The Ports and Yachting Directorate, Transport Malta notifies all bathers, mariners and owners of sea craft that the following arrangements will be made for Blue Lagoon in the channel between Comino and Cominotto for the period between 1 May 2014 and 15 October 2014

1) Swimmers' Zone

No vessels or objects which may endanger the safety of bathers shall be used within a swimmers' zone. The swimmers' zone which is being reserved exclusively for bathers and is delineated by the following coordinates:-

POSITIONS	LATITUDE (N)	LONGITUDE (E)
1A	36° 00'.893	14° 19'.281
1B	36° 00'.898	14° 19'.289
1C	36° 00'.825	14° 19'.351
1D	36° 00'.846	14° 19'.440
1E	36° 00'.854	14° 19'.448
1F	36° 00'.751	14° 19'.471
1G	36° 00'.740	14° 19'.390

2) Mooring areas for Commercial vessels

2 mooring areas are being assigned for Commercial vessels. The boundaries of these mooring areas are delineated by the following coordinates:-

4	36° 00'.966	14° 19'.329	(Buoy)
5	36° 01'.024	14° 19'.372	(Shore)
6	36° 00'.974	14° 19'.426	(Shore)
7	36° 00'.933	14° 19'.374	
8	36° 00'.908	14° 19'.388	
9	36° 00'.941	14° 19'.433	
10	06° 00'.920	14° 19'.458	(Shore)
11	36° 00'.866	14° 19'.439	(Shore)
12	36° 00'.859	14° 19'.421	(Buoy)



Transport Malta

3) Fairway

A fairway has been established as indicated in the chart. Special marks fitted with a yellow light flashing every 5 seconds will be placed in the following positions

Points	Latitude (N)	Longitude (E)	
1	36° 00'.842	14° 19'.409	(Buoy)
2	36° 00'.920	14° 19'.356	(Buoy)
3	36° 00'.987	14° 19'.311	(Buoy)
4	36° 01'.000	14° 19'.329	(Buoy)
12	36° 00'.859	14° 19'.421	(Buoy)

The fairway is to be used solely for navigation and should otherwise be kept clear.

A minimum safety clearing distance of 5 metres from the swimmers' zone is to be maintained.

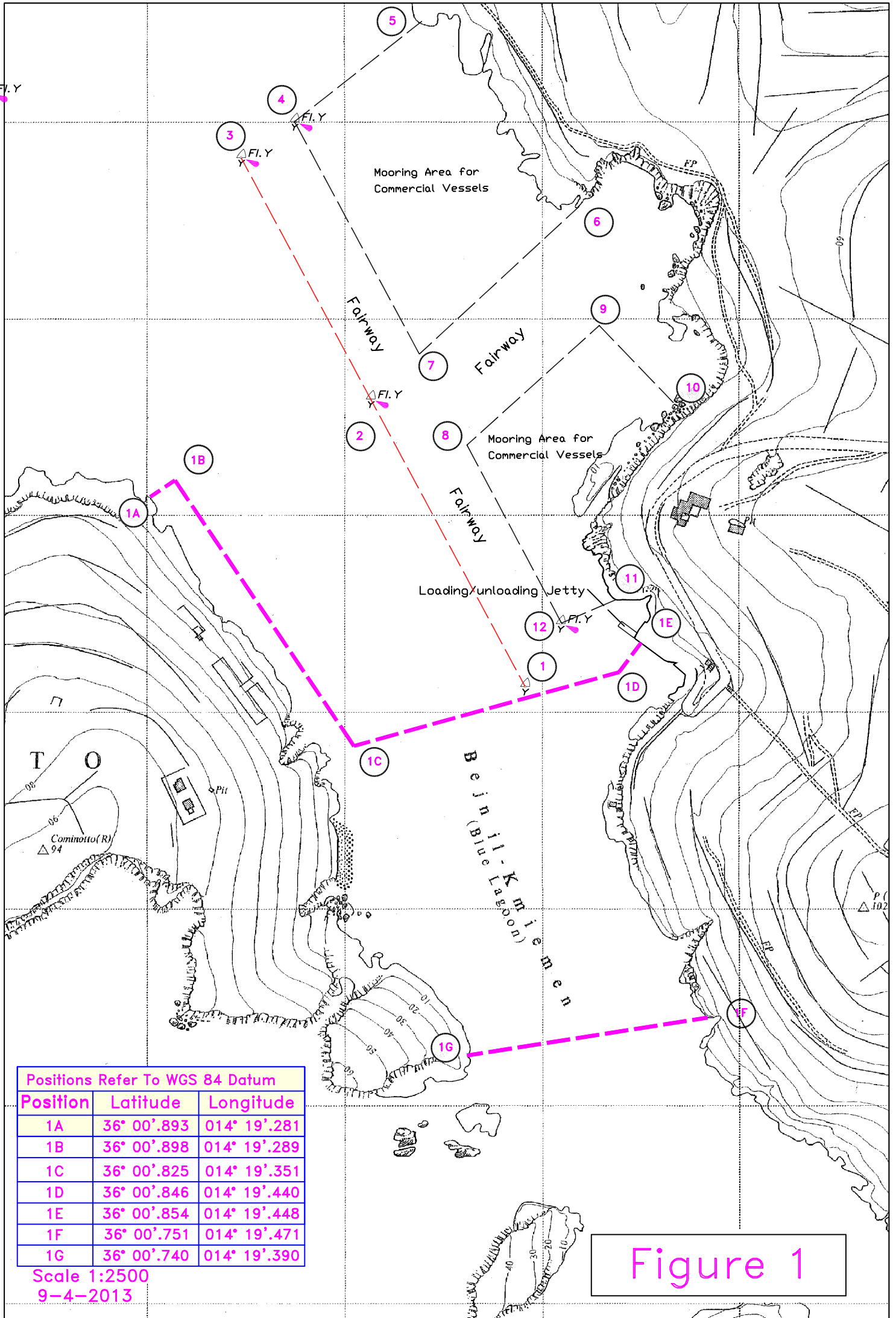
Nylon ropes supported by floats will delineate the swimmers' zone and may remain in place, two weeks after the stipulated date.

For the benefit and safety of all bathers and mariners, Transport Malta urges all visitors and commercial vessels to adhere to these arrangements. Enforcement Officers will be constantly patrolling the area.

Mariners are advised to keep a good lookout and navigate with caution and at slow speed in the Channel between Comino and Cominotto. They are also reminded that it is prohibited to secure/moor any vessel to any of the marker buoys, swimmers' zone delineation markers and related gear belonging to Transport Malta.

All positions are referred to WGS 84 DATUM.

Chart Affected: BA 211



Positions Refer To WGS 84 Datum

Position	Latitude	Longitude
1A	36° 00'.893	014° 19'.281
1B	36° 00'.898	014° 19'.289
1C	36° 00'.825	014° 19'.351
1D	36° 00'.846	014° 19'.440
1E	36° 00'.854	014° 19'.448
1F	36° 00'.751	014° 19'.471
1G	36° 00'.740	014° 19'.390

Scale 1:2500
9-4-2013

Figure 1