



**Transport Malta**

**PORTS AND YACHTING DIRECTORATE**

## **LOCAL NOTICE TO MARINERS No 91 of 2013**

Our Ref: TM/PYD/56/10

27 November 2013

Malta Transport Centre  
Marsa, MRS 1917  
Malta

Tel: (356) 2122 2203  
Fax: (356) 2125 0365  
Email: [info.tm@transport.gov.mt](mailto:info.tm@transport.gov.mt)

[www.transport.gov.mt](http://www.transport.gov.mt)

### **Sampling from Seabed Pieta Creek, Marsamxett.**

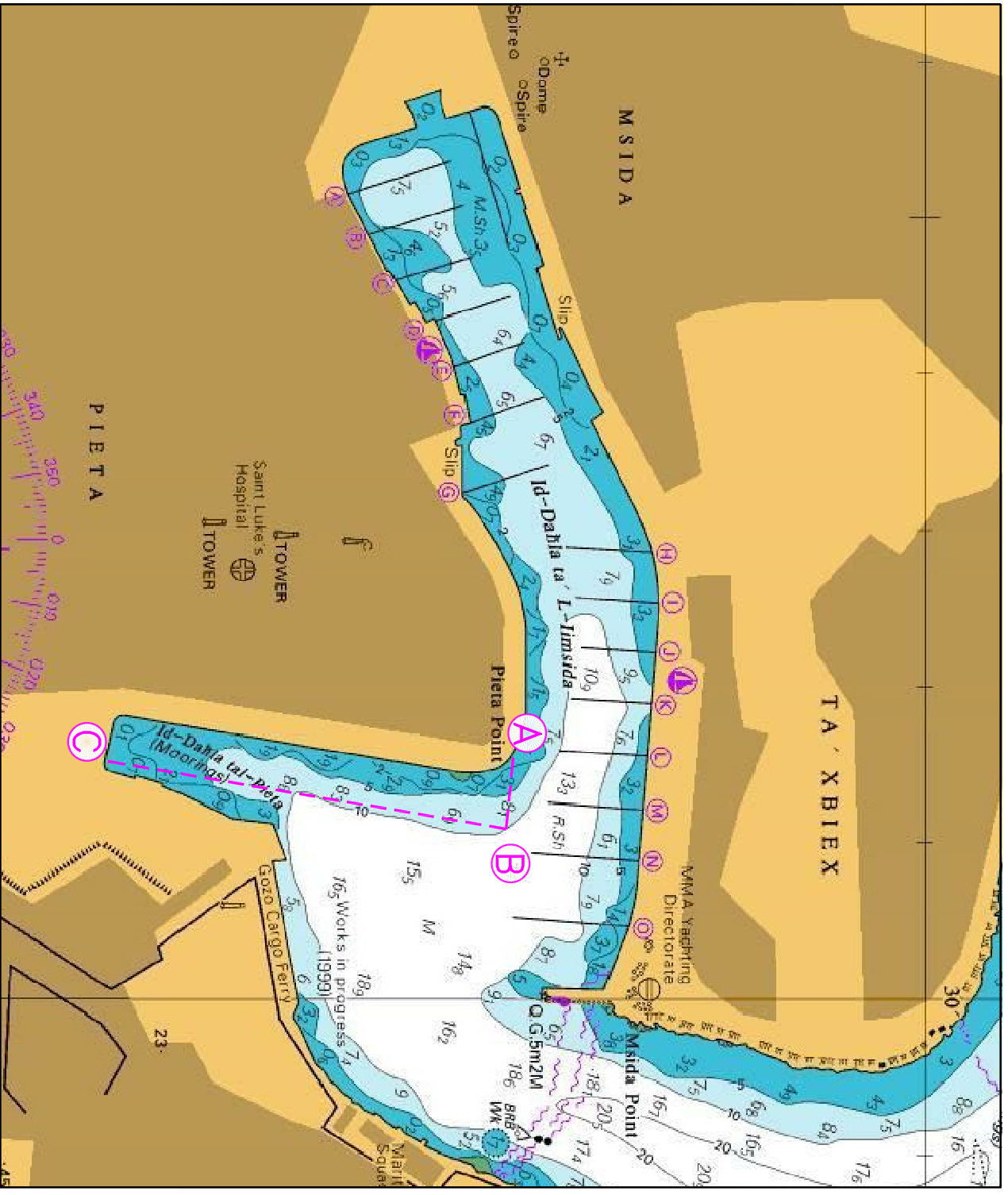
The Ports and Yachting Directorate, Transport Malta, notifies mariners that sampling from the seabed will be carried out at Pieta Creek, within the area A, B, C and the intermediate coastline as shown on the attached Chart. The works are expected to start on the 2 December 2013 and expected to be completed by the 20 December 2013, weather permitting.

The survey will be carried out by divers who will display the International Code of Signals flag "A" from shore and the appropriate divers' buoy.

Mariners and operators of vessels are advised to keep a sharp lookout and proceed with caution and at very slow speed and give the area a wide berth of at least 100 metres.

Moreover, they are to comply with instructions given by Valletta Port Control (Valletta VTS) on VHF Channel 12.

Chart affected: BA 177A



©British Crown Copyright 1970, 1983, 1986, 1988, 1999, 2000.  
All rights reserved

The UK Hydrographic Office makes the accompanying data available to Transport Malta under the terms and conditions of agreement MD 1427/020930/01.

**DISCLAIMER**

Whilst the UK Hydrographic Office has endeavoured to ensure that the material supplied is suitable for the purpose described, it accepts no liability (to the maximum extent permitted by law) for any damage or loss of any nature arising from its use. The material supplied is used entirely at the Recipient's own risk.