



Transport Malta

Malta Transport Centre
Marsa, MRS 1917
Malta

Tel: (356) 2122 2203
Fax: (356) 2125 0365
Email: info.tm@transport.gov.mt

www.transport.gov.mt

PORTS AND YACHTING DIRECTORATE

LOCAL NOTICE TO MARINERS NO 77 of 2013

Our Ref: TM/PYD/45/05

11 September, 2013

Dredging Works at the inner area of Salina Bay

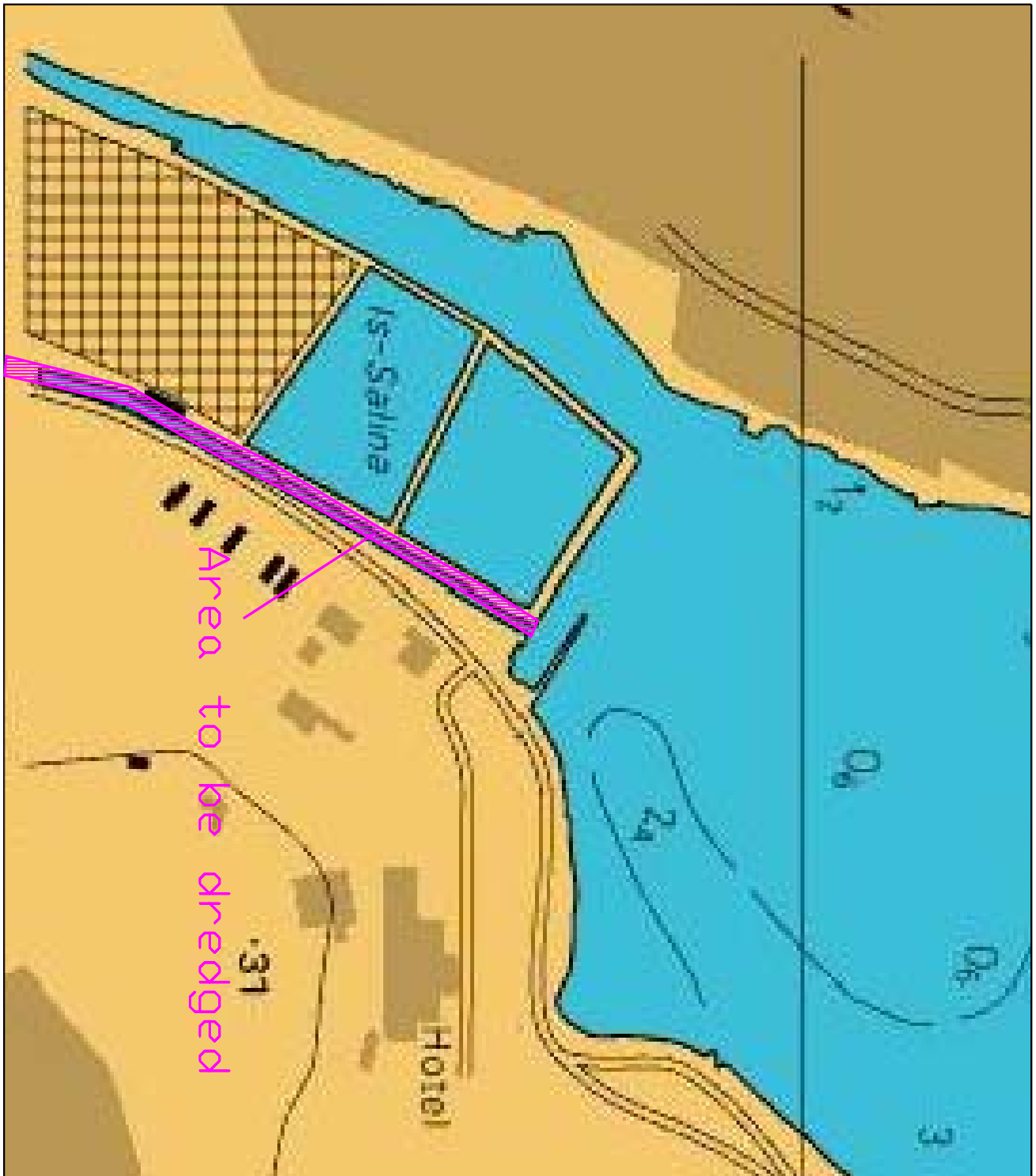
The Ports and Yachting Directorate, Transport Malta notifies Mariners that dredging works will be carried out in the area between the "Salini" and the coast road which is known as the "Sokkors" and as shown on attached chart hatched in magenta. The dredging works will be carried out by means of an excavator from land.

The works are expected to start on Monday 23 September 2013.

All vessels, moorings and related ground tackle lying in this area are to be removed immediately and not later than the 20th September 2013.

No liability whatsoever will be accepted for any loss or damage made to any vessel, moorings and associated ground tackle if left lying in the area after the stipulated date

Charts Affected: BA Chart 211B, 211A



British Crown Copyright 1970, 1983, 1986, 1988, 1999, 2000.
All rights reserved.

The UK Hydrographic Office makes the accompanying data available to Transport Malta under the terms and conditions of agreement HD 1427/080930/01.

Whilst the UK Hydrographic Office has endeavoured to ensure that the material supplied is suitable for the purpose described, it accepts no liability (to the maximum extent permitted by law) for any damage or loss of any nature arising from its use. The material supplied is used entirely at the Recipient's own risk.