



Transport Malta

PORTS AND YACHTING DIRECTORATE

LOCAL NOTICE TO MARINERS NO 61 OF 2013

Our Ref: TM/PYD/63/00

06 August 2013

Malta Transport Centre
Marsa, MRS 1917
Malta

Tel: (356) 2122 2203
Fax: (356) 2125 0365
Email: info.tm@transport.gov.mt

www.transport.gov.mt

Marine Surveys – Malta West Coast

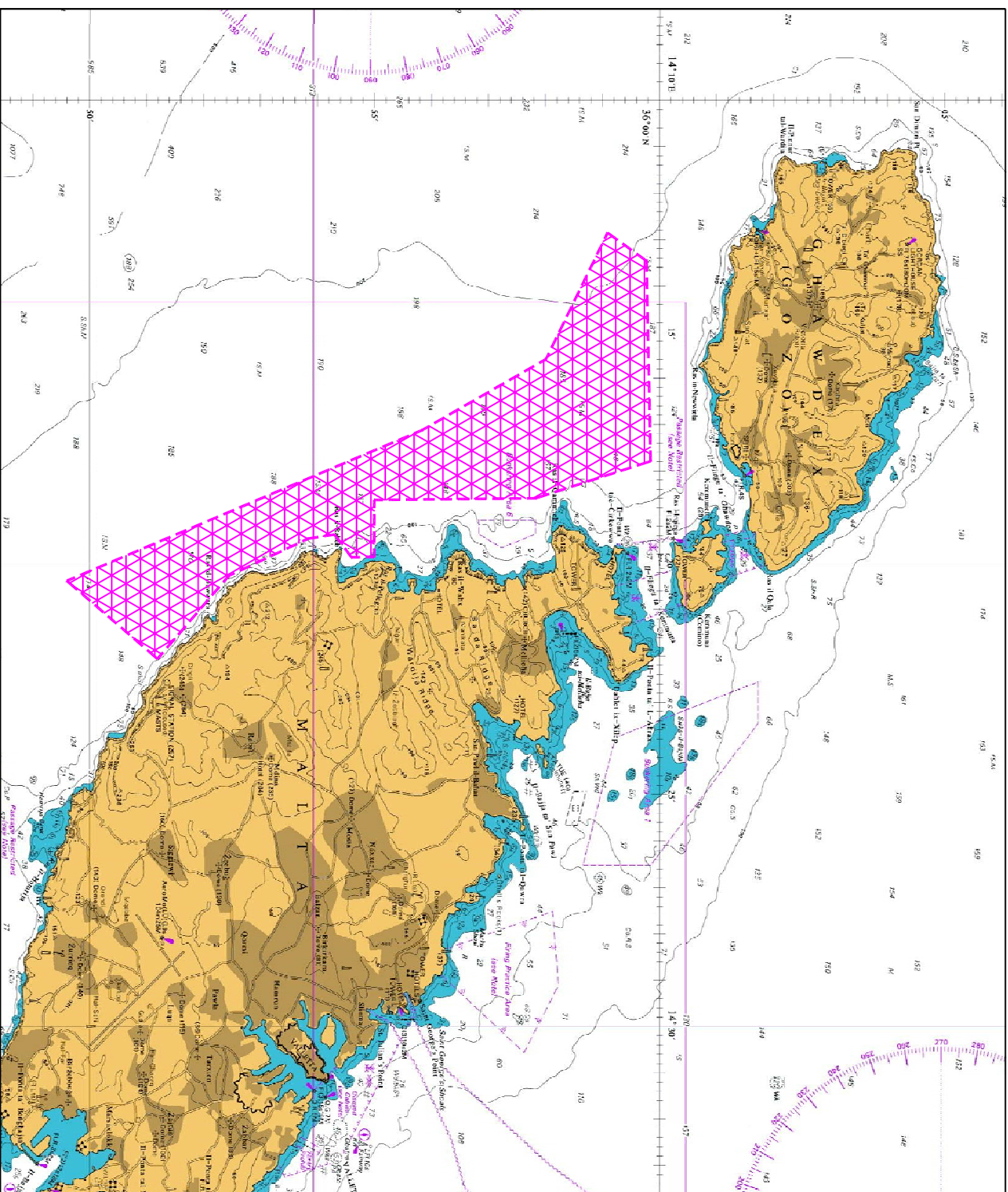
The Ports and Yachting Directorate, Transport Malta notifies Mariners that marine surveys will be carried out off the west coast of Malta within the sea area indicated on the attached chart (coloured in Magenta).

Weather permitting the survey is expected to start with immediate effect and will be completed by the end of October 2013.

The vessel M/V Wilfred will conduct the survey and will be restricted in manoeuvrability.

Mariners are to note the above and give a wide berth of at least 150 m when vessel is sighted. Any instructions issued by Valletta VTS (Valletta Port Control) are to be adhered to.

Positions referred to WGS 84 DATUM



©British Crown Copyright 1970, 1983, 1986, 1988, 1999, 2000.
 All rights reserved
 The UK Hydrographic Office makes the accompanying data available to Transport Malta under the terms and conditions of agreement HD 1427/020930/01
 DISCLAIMER

Whilst the UK Hydrographic Office has endeavoured to ensure that the material supplied is suitable for the purpose described, it accepts no liability (to the maximum extent permitted by law) for any damage or loss of any nature arising from its use. The material supplied is used entirely at the Recipient's own risk.