



Transport Malta

Malta Transport Centre
Marsa, MRS 1917
Malta

Tel: (356) 2122 2203
Fax: (356) 2125 0365
Email: info.tm@transport.gov.mt

www.transport.gov.mt

PORTS AND YACHTING DIRECTORATE

LOCAL NOTICE TO MARINERS NO 53 of 2013

Our Ref: TM/PYD/26/94/1

25 July 2013

Firework Displays in Grand Harbour

The Ports and Yachting Directorate, Transport Malta, notifies that firework displays will be let off from Bighi shore (as shown on attached chart) and also from barges moored 200m and 340m off Bighi Point on the following dates and times:-

Bighi shore/Barges:

Thursday 8 August 2013	From 0800 hrs till 0830 hrs, from 1200 hrs till 1230 hrs and between 2000 hrs and 2130 hrs
Friday 9 August 2013	From 0900 hrs till 1000 hrs, from 1200 hrs till 1230 hrs, from 1800 hrs till 1900 hrs and from 2130 hrs till 0115 hrs (10 th August 2013)
Saturday 10 August 2013	From 0745 hrs till 0830 hrs, from 1145 hrs till 1230 hrs and from 1700 hrs till 2330 hrs

Barges:

The barges to be used for firework displays shall be moored on Wednesday 7 August, 2013 in the following positions:

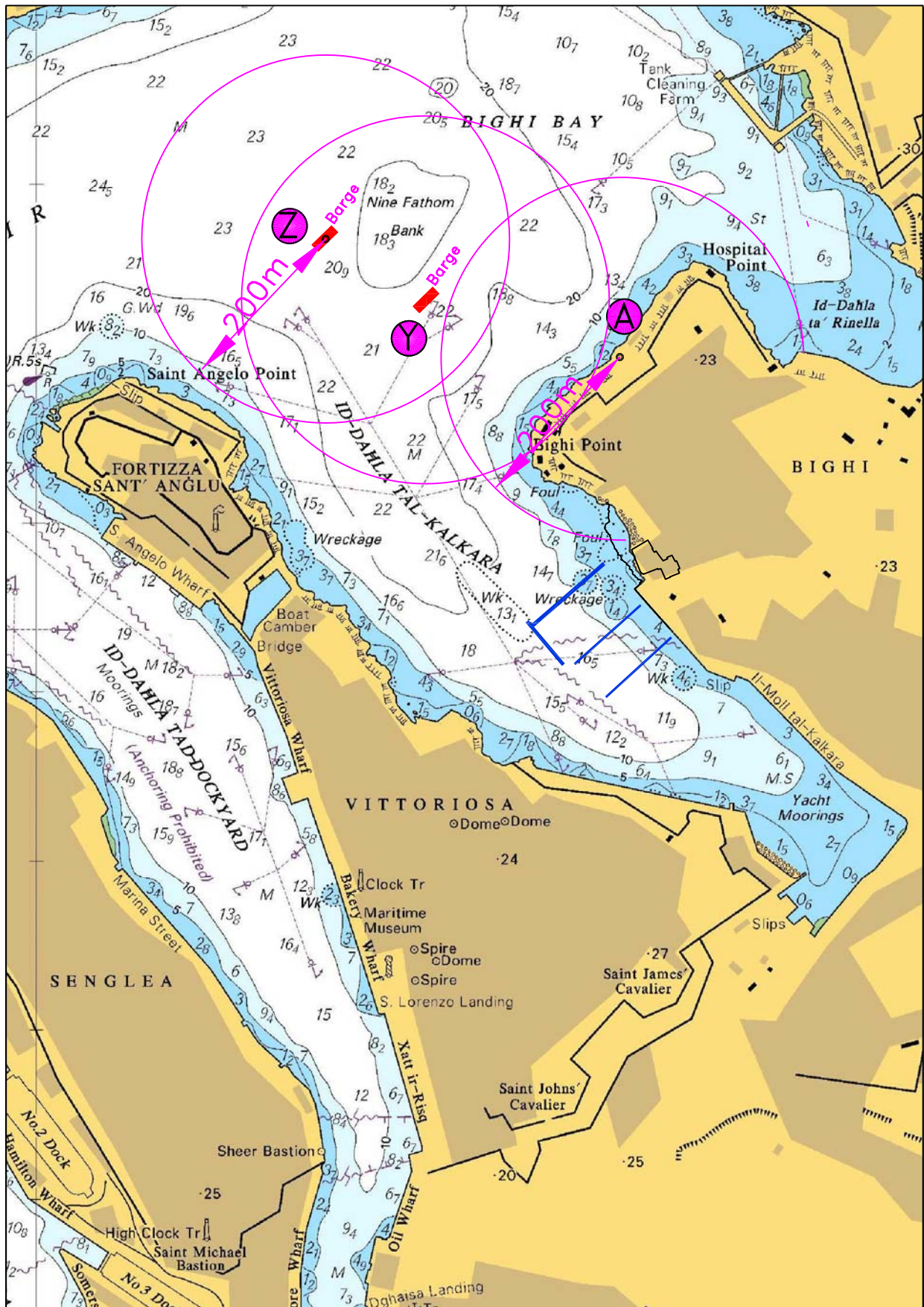
	LATITUDE (N)	LONGITUDE (E)
Y	35°53'.632	14°31'.281
Z	35°53'.669	14°31'.207

The barges will be removed on Monday 12th August 2013.

A wide berth of 200 meters is requested from Bighi Shore and from the position of the barges on the days and times indicated above. Mariners are to navigate with caution and slow speed. Instructions and directions given by Valletta Port Control (Valletta VTS) are to be complied with.

Chart affected BA Chart 177.

Positions are referred to WGS 84 Datum.



© British Crown Copyright 1970, 1983, 1986, 1988, 1999, 2000.
All rights reserved

The UK Hydrographic Office makes the accompanying data available to Transport Malta under the terms and conditions of agreement HD 1427/020930/01.

DISCLAIMER

Whilst the UK Hydrographic Office has endeavoured to ensure that the material supplied is suitable for the purpose described, it accepts no liability (to the maximum extent permitted by law) for any damage or loss of any nature arising from its use. The material supplied is used entirely at the Recipient's own risk.