



PORTS AND YACHTING DIRECTORATE

Transport Malta

LOCAL NOTICE TO MARINERS NO 52 of 2013

Our Ref: TM/PYD/63/95 VI

24 July 2013

Malta Transport Centre
Marsa, MRS 1917
Malta

Tel: (356) 2122 2203
Fax: (356) 2125 0365
Email: info.tm@transport.gov.mt

www.transport.gov.mt

Research Activities in Marsaxlokk Harbour

The Ports and Yachting Directorate, Transport Malta, notifies mariners that research activities will be carried out off the Enemalta quay in Marsaxlokk Harbour in the area between the imaginary line ABCD and the intermediate coastline, as indicated on the attached chart, between **29 July** and **Mid August 2013**.

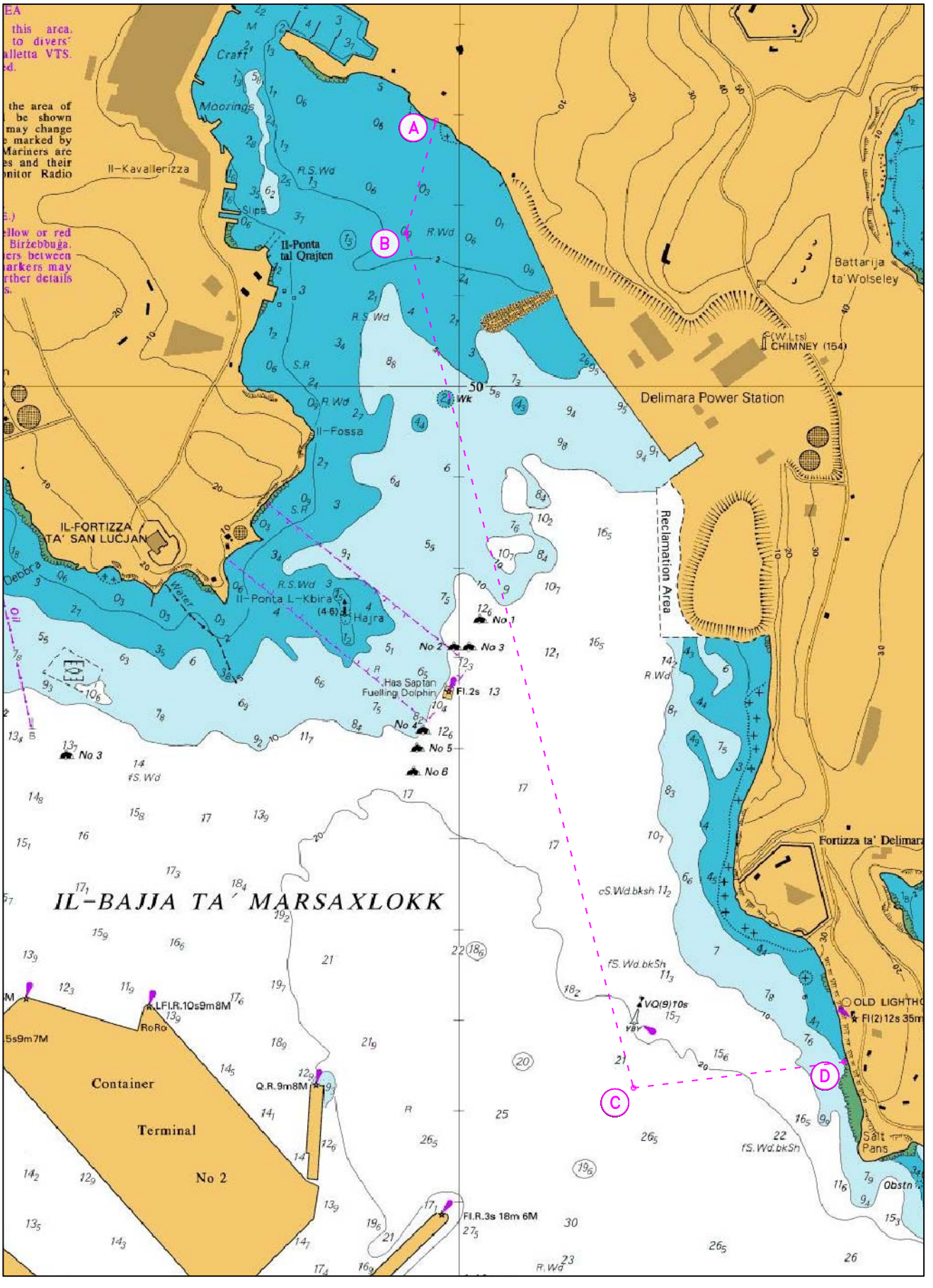
Position	Latitude (N)	Longitude (E)
A	35° 50'.294	14° 32'.969
B	35° 50'.159	14° 32'.928
C	35° 49'.223	14° 33'.239
D	35° 49'.253	14° 33'.523

The work boat "Midas Express" will be used and will be towing equipment. This vessel will have restricted maneuverability.

Masters and operators of vessels are advised to keep a sharp lookout, navigate with caution and slow speed and give the above area a wide berth of at least 300m. They are to comply with instructions given by Marsaxlokk Port Control (VTS) on VHF Channel 14.

Chart affected: BA 36

Positions referred to WGS 84 DATUM.



EA
 this area
 to divers
 alletta VTS.
 ed.

the area of
 be shown
 may change
 marked by
 Mariners arcs
 and their
 onitor Radio

ellow or red
 Birzebbuga.
 ers between
 markers may
 rther details
 S.

IL-BAJJA TA' MARSAXLOKK

**Container
 Terminal
 No 2**

©British Crown Copyright 1970, 1983, 1986, 1988, 1999, 2000.
 All rights reserved.

The UK Hydrographic Office makes the accompanying data
 available to Transport Malta under the terms and
 conditions of agreement HD 1467/180950/01.

DISCLAIMER

Whilst the UK Hydrographic Office has endeavoured to ensure
 that the material supplied is suitable for the purpose described,
 it accepts no liability (to the maximum extent permitted by law)
 for any damage or loss of any nature arising from its use.
 The material supplied is used entirely at the recipient's own risk.