



PORTS AND YACHTING DIRECTORATE

Transport Malta

## LOCAL NOTICE TO MARINERS NO 40 of 2013

Our Ref: TM/PYD/63/95 VI

Malta Transport Centre  
Marsa, MRS 1917  
Malta

Tel: (356) 2122 2203  
Fax: (356) 2125 0365  
Email: [info.tm@transport.gov.mt](mailto:info.tm@transport.gov.mt)

20 June 2013

[www.transport.gov.mt](http://www.transport.gov.mt)

### Diving Operations and Research Activities in Marsaxlokk Harbour

The Ports and Yachting Directorate, Transport Malta, notifies mariners that diving operations and research activities will be carried out off the Enemalta quay in Marsaxlokk Harbour in the area between the imaginary line ABCD and the intermediate coastline, as indicated on the attached chart, between **25 June** and **29 June 2013**.

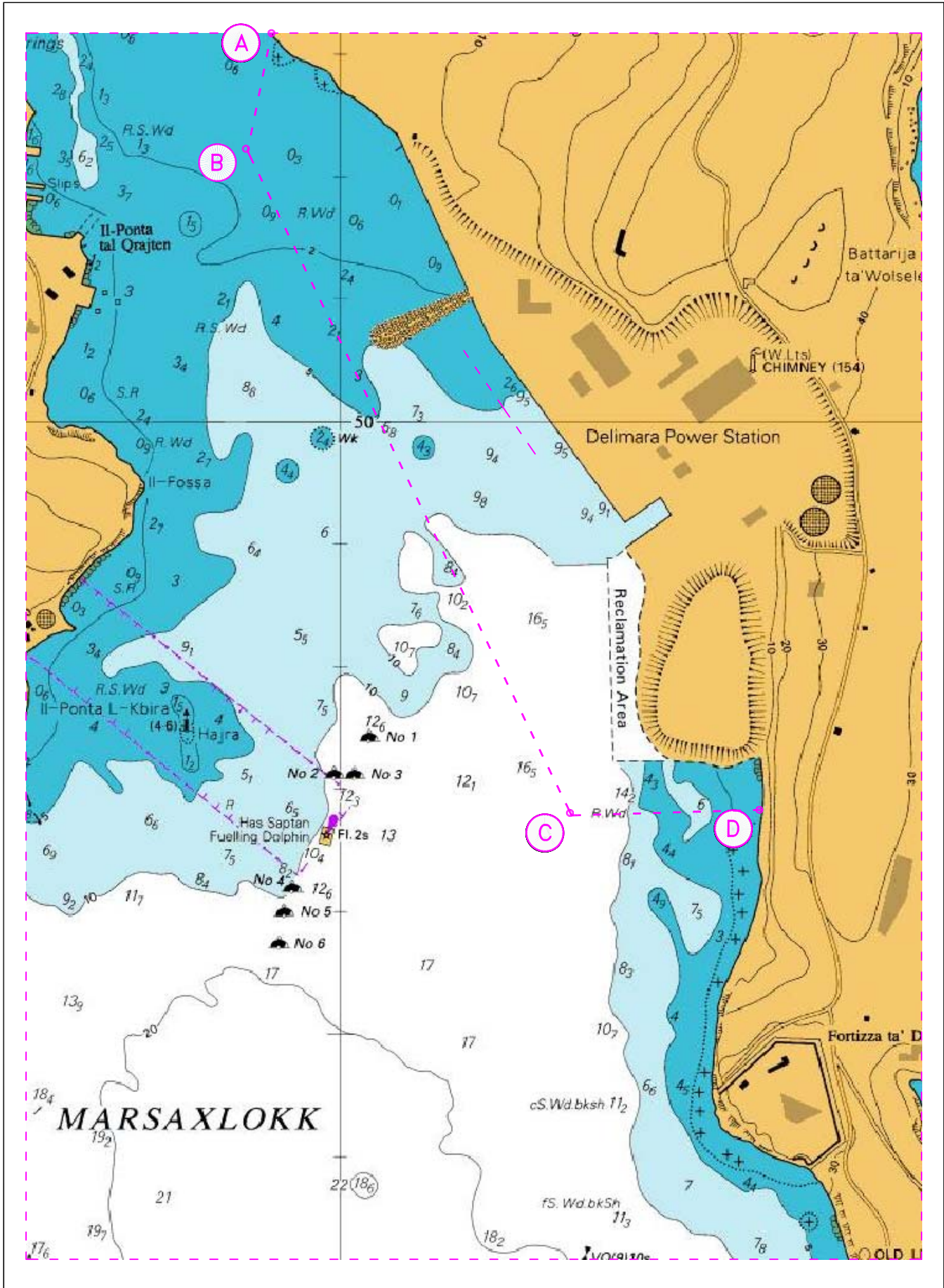
Position	Latitude (N)	Longitude (E)
A	35° 50'.320	14° 32'.932
B	35° 50'.212	14° 32'.906
C	35° 49'.674	14° 33'.231
D	35° 49'.679	14° 33'.422

Divers will carry out this work with the assistance of work boat "Odalisque". The work boat will be displaying the international Code of Signals Flag "A" and will have restricted maneuverability.

Masters and operators of sea craft are advised to keep a sharp lookout, navigate with caution and slow speed and give the above area a wide berth of at least 200m They are to comply with instructions given by Marsaxlokk Port Control (VTS) on VHF Channel 14.

Chart affected: BA 36

Positions referred to WGS 84 DATUM.



©British Crown Copyright 1970, 1983, 1986, 1988, 1999, 2000.  
All rights reserved

The UK Hydrographic Office makes the accompanying data available to Transport Malta under the terms and conditions of agreement HD 1427/020930/01.

**DISCLAIMER**

Whilst the UK Hydrographic Office has endeavoured to ensure that the material supplied is suitable for the purpose described, it accepts no liability (to the maximum extent permitted by law) for any damage or loss of any nature arising from its use. The material supplied is used entirely at the Recipient's own risk.