



**PORTS AND YACHTING DIRECTORATE**



**Transport Malta**

Malta Transport Centre  
Marsa, MRS 1917  
Malta

Tel: (356) 2122 2203  
Fax: (356) 2125 0365  
Email: [info.tm@transport.gov.mt](mailto:info.tm@transport.gov.mt)

[www.transport.gov.mt](http://www.transport.gov.mt)

## **LOCAL NOTICE TO MARINERS NO 38 of 2013**

Our Ref: TM/PYD/39/13/06

18 June 2013

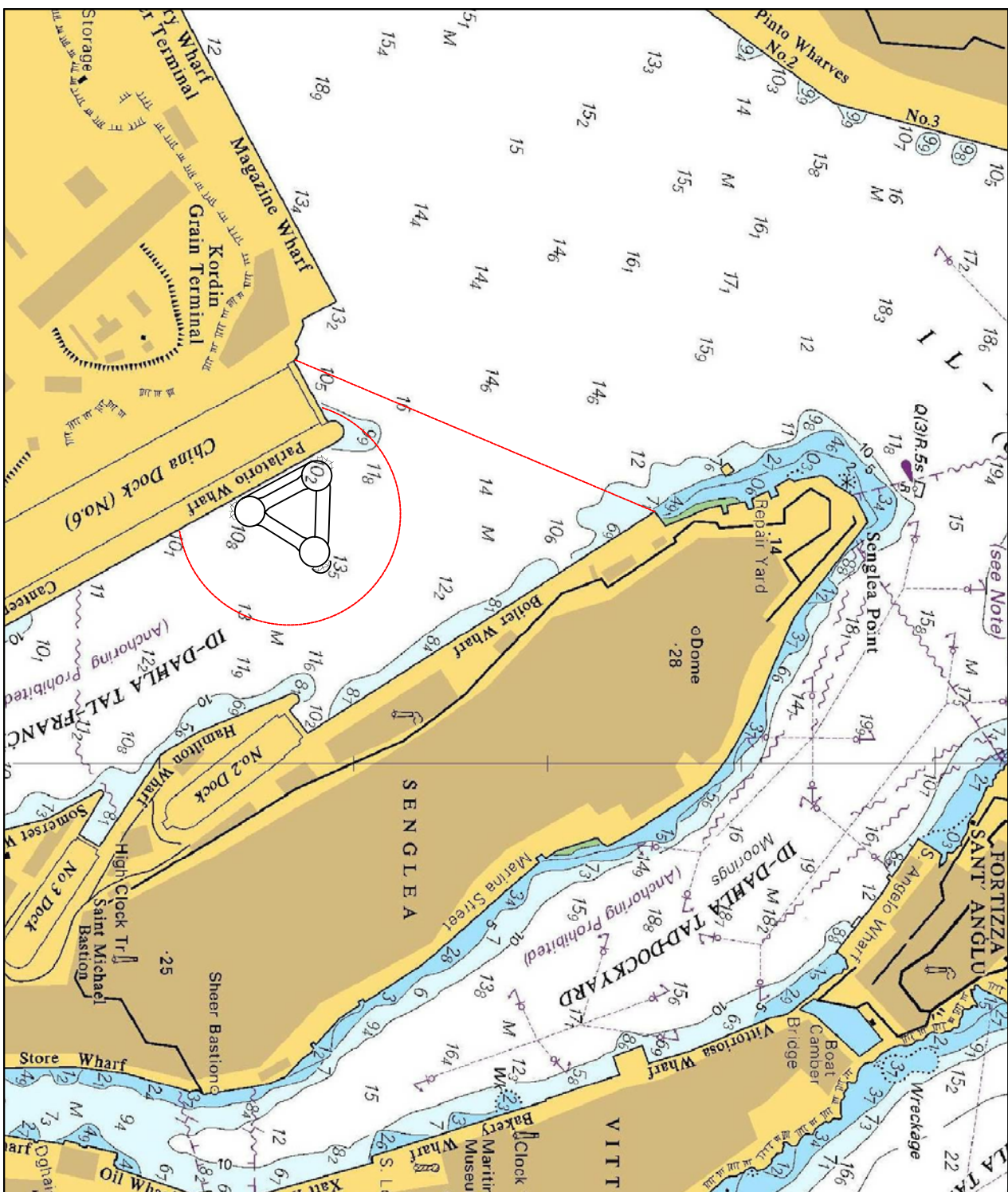
### **Entry restricted in French Creek – Grand Harbour**

The Ports and Yachting Directorate, Transport Malta, notifies Masters of all vessels that with immediate effect and until further notice a safety zone of 50 meters has been established around the semisubmersible Oil Rig berthed at Parlatorio Wharf in French Creek. No vessel is allowed to navigate within this sector area shown on attached chart.

Furthermore as from Wednesday 19<sup>th</sup> June 2013 navigation within French Creek, Grand Harbour is prohibited. Only authorized vessels will be allowed to navigate within these restricted areas.

Instructions given by Valletta Port Control (VTS) are to be strictly observed.

Chart Affected BA 177



©British Crown Copyright 1970, 1983, 1986, 1988, 1999, 2000.  
All rights reserved

The UK Hydrographic Office makes the accompanying data available to Transport Malta under the terms and conditions of agreement MD 1427/020930/01.

#### DISCLAIMER

Whilst the UK Hydrographic Office has endeavoured to ensure that the material supplied is suitable for the purpose described, it accepts no liability (to the maximum extent permitted by law) for any damage or loss of any nature arising from its use. The material supplied is used entirely at the Recipient's own risk.