



PORTS AND YACHTING DIRECTORATE

**Transport Malta**

## LOCAL NOTICE TO MARINERS NO 27 of 2013

Our Ref: TM/PYD/303/77 Vol III

27 May 2013

Malta Transport Centre  
Marsa, MRS 1917  
Malta

Tel: (356) 2122 2203  
Fax: (356) 2125 0365  
Email: [info.tm@transport.gov.mt](mailto:info.tm@transport.gov.mt)

[www.transport.gov.mt](http://www.transport.gov.mt)

### National Regatta Association - Under 18 Challenge Shield

The Ports and Yachting Directorate, Transport Malta notifies Mariners that the National Regatta Association will be organising the 13<sup>th</sup> edition of the Under 18 Challenge Shield in Rinella Bay, Kalkara, Grand Harbour.

The regatta races will be held on Saturday 6<sup>th</sup> July 2013 from 1700 hours to 2000 hours.

Four (4) buoys will be laid to delineate the area at the starting time of each race. No vessel will be allowed to enter or leave the designated area unless by special permission issued by Transport Malta. The buoys will be removed at the end of the races.

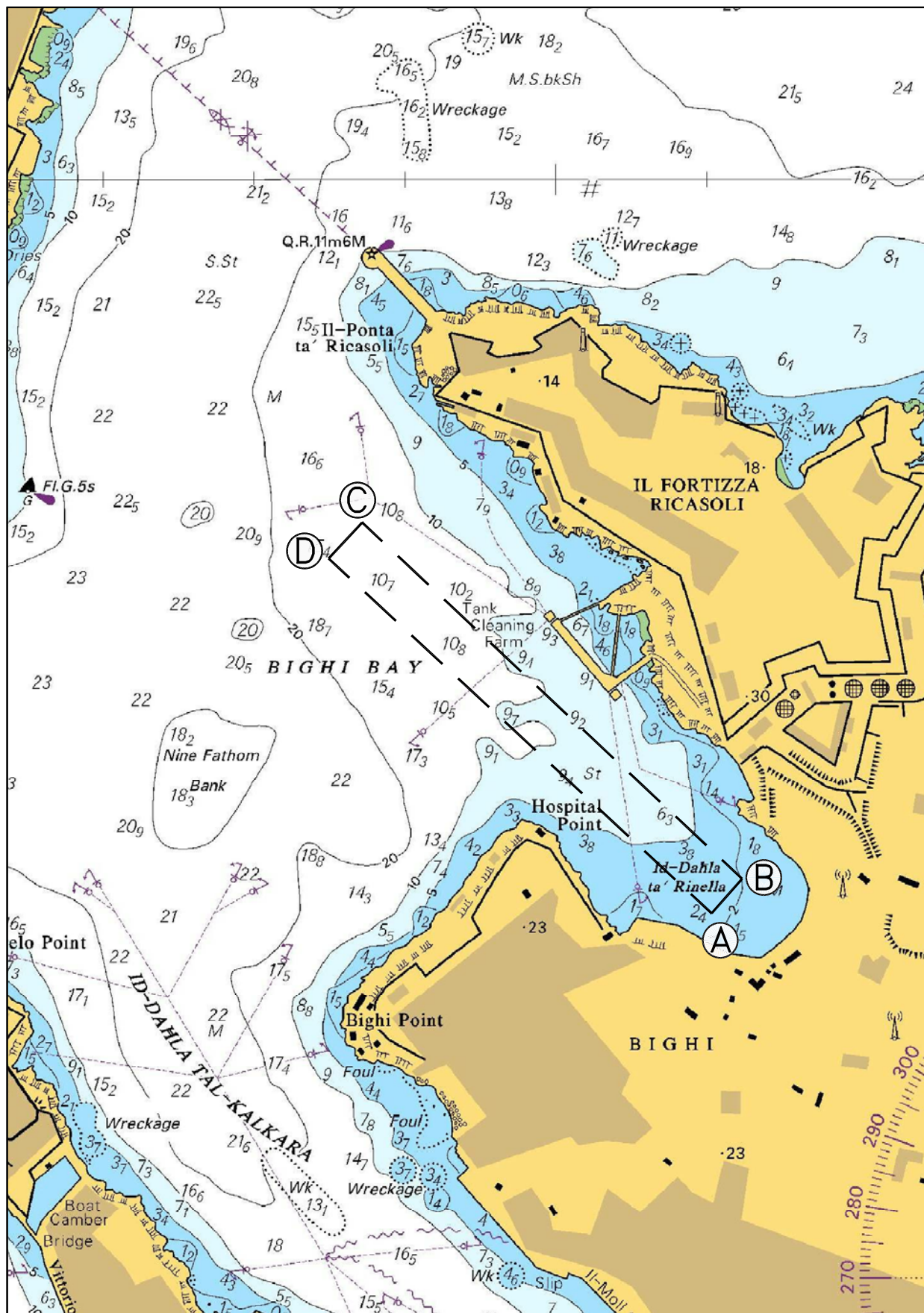
The positions of the buoys will be as follows:

	<b>LATITUDE (N)</b>	<b>LONGITUDE (E)</b>
<b>A</b>	<b>35° 53'.592</b>	<b>14° 31'.618</b>
<b>B</b>	<b>35° 53'.617</b>	<b>14° 31'.640</b>
<b>C</b>	<b>35° 53'.815</b>	<b>14° 31'.375</b>
<b>D</b>	<b>35° 53'.795</b>	<b>14° 31'.350</b>

Mariners are advised to obey instructions given by the Valletta VTS (Valletta Port Control) and by patrol boats and TM Enforcement Officers in the vicinity of the races.

Positions are referred to WGS 84 DATUM.

Parts of BA Chart 177 are attached.



©British Crown Copyright 1970, 1983, 1986, 1988, 1999, 2000.  
All rights reserved

The UK Hydrographic Office makes the accompanying data  
available to Transport Malta under the terms and conditions  
of agreement HD 1427/020930/01.

#### DISCLAIMER

Whilst the UK Hydrographic Office has endeavoured to ensure  
that the material supplied is suitable for the purpose described,  
it accepts no liability (to the maximum extent permitted by law)  
for any damage or loss of any nature arising from its use.  
The material supplied is used entirely at the Recipient's own risk.