



PORTS AND YACHTING DIRECTORATE

Transport Malta

## LOCAL NOTICE TO MARINERS NO 13 of 2013

Our Ref: TM/PYD/63/95 Vol VI

Malta Transport Centre  
Marsa, MRS 1917  
Malta

Tel: (356) 2122 2203  
Fax: (356) 2125 0365  
Email: [info.tm@transport.gov.mt](mailto:info.tm@transport.gov.mt)

7 May 2013

[www.transport.gov.mt](http://www.transport.gov.mt)

### Further Drilling Works for Geotechnical Investigations off Enemalta Quay, Marsaxlokk.

The Ports and Yachting Directorate, Transport Malta, notifies mariners that further drilling works for geotechnical investigations will be carried out off the Enemalta Quay in Marsaxlokk Harbour.

These works will be carried in the area W, X, Y, Z and the intermediate coastline as shown on the attached chart and in approximate positions:

	LATITUDE (N)	LONGITUDE (E)
<b>W</b>	<b>35° 49.892'</b>	<b>14° 33.283'</b>
<b>X</b>	<b>35° 49.892'</b>	<b>14° 33.154'</b>
<b>Y</b>	<b>35° 49.573'</b>	<b>14° 33.156'</b>
<b>Z</b>	<b>35° 49.574'</b>	<b>14° 33.404'</b>

Weather permitting the works are expected to be commence on Monday 13 May 2013 and completed by Friday 14 June 2013.

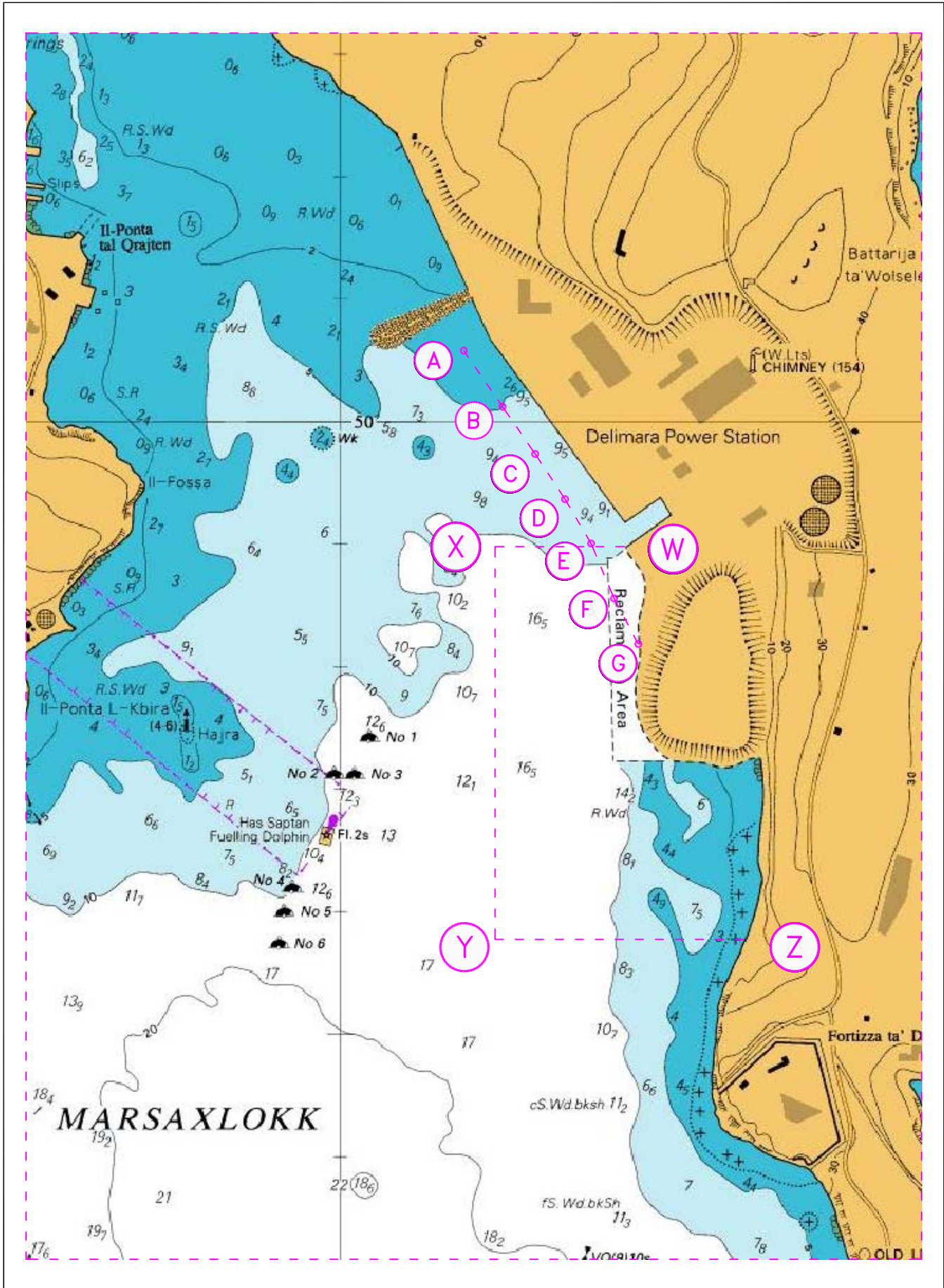
They will be carried out from a flat barge which will be accompanied by a small tug boat. The barge may deploy anchors to hold it in position and may remain in the area during the night.

Further more mariners and operators of sea craft are advised to keep a sharp lookout, proceed at very slow speed and give the above area a wide berth of at least 300 meters.

Instructions given by Marsaxlokk Port Control (VTS) on VHF Channel 13 are to be complied with.

Chart affected: BA 36

Positions referred to WGS 84 DATUM.



©British Crown Copyright 1970, 1983, 1986, 1988, 1999, 2000. All rights reserved

The UK Hydrographic Office makes the accompanying data available to Transport Malta under the terms and conditions of agreement HD 1427/020930/01.

**DISCLAIMER**

Whilst the UK Hydrographic Office has endeavoured to ensure that the material supplied is suitable for the purpose described, it accepts no liability (to the maximum extent permitted by law) for any damage or loss of any nature arising from its use. The material supplied is used entirely at the Recipient's own risk.