



 Port & Yachting Directorate

 Transport Malta

 Maltese Transport Centre

 XALLI-GNANJON IJ-L-GRANĊI

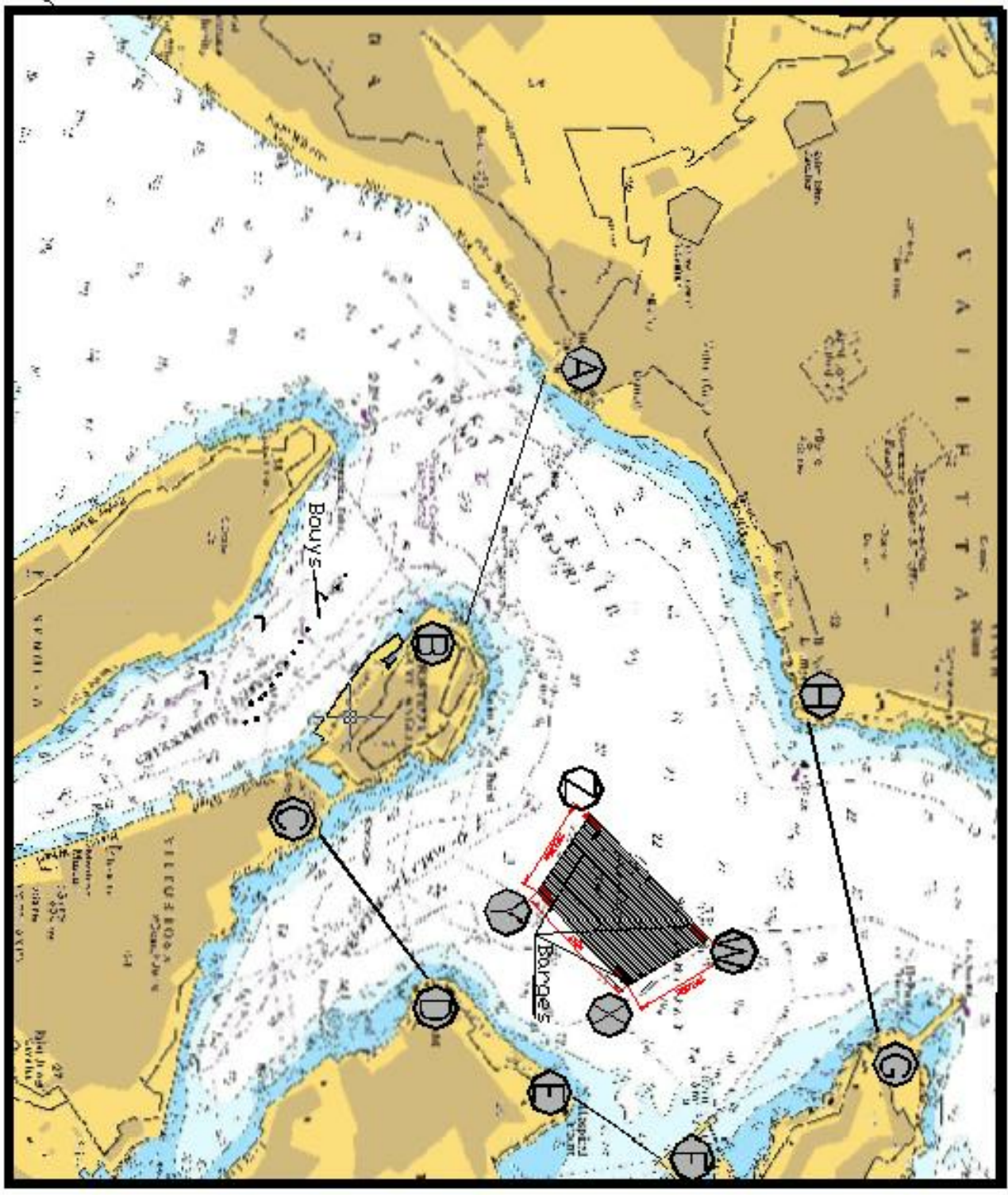
 MARSA MRS 1917

 Tel: 21222203

 Fax: 21222208

 Email: info@transport.gov.mt

 www.transport.gov.mt



Fireworks Area

W	35° 53' 754	014° 31' 314
X	35° 53' 693	014° 31' 357
Y	35° 53' 632	014° 31' 281
Z	35° 53' 669	014° 31' 207

©British Crown Copyright 1970, 1988, 1996, 1998, 1999, 2000, 2011.
 All rights reserved.
 The UK Hydrographic Office makes the accompanying data available to Transport Malta under the terms and conditions of agreement no MTS/2000/01.

DISCLAIMER

Whilst the UK Hydrographic Office has endeavoured to ensure that the material supplied is suitable for the purpose described, it accepts no liability for the results obtained by users. The material is provided as a guide only and is not to be used for any purpose other than that intended. The user assumes all responsibility for the use of the material.