



Transport Malta

Malta Transport Centre
Marsa, MRS 1917
Malta

Tel: (356) 2122 2203
Fax: (356) 2125 0365
Email: info.tm@transport.gov.mt

www.transport.gov.mt

PORTS AND YACHTING DIRECTORATE

NOTICE TO MARINERS NO 16 of 2012

Our Ref: **TM/PYD/299/81 Vol XI**

2 October, 2012

Chart Correction

Reference is made to BA Chart 211B – Il-Bajja ta' San Pawl

Il-Gzejjer ta' San Pawl : Fish Farm boundary

- 1) Delete special mark buoy symbols in the following positions

	Latitude (N)	Longitude (E)
A	35° 57'.836	14° 24'.078
B	35° 57'.902	14° 24'.387
C	35° 57'.779	14° 24'.499
D	35° 57'.676	14° 24'.225

- 2)_ Delete fish farm boundary pecked line joining the above points A, B, C and D above

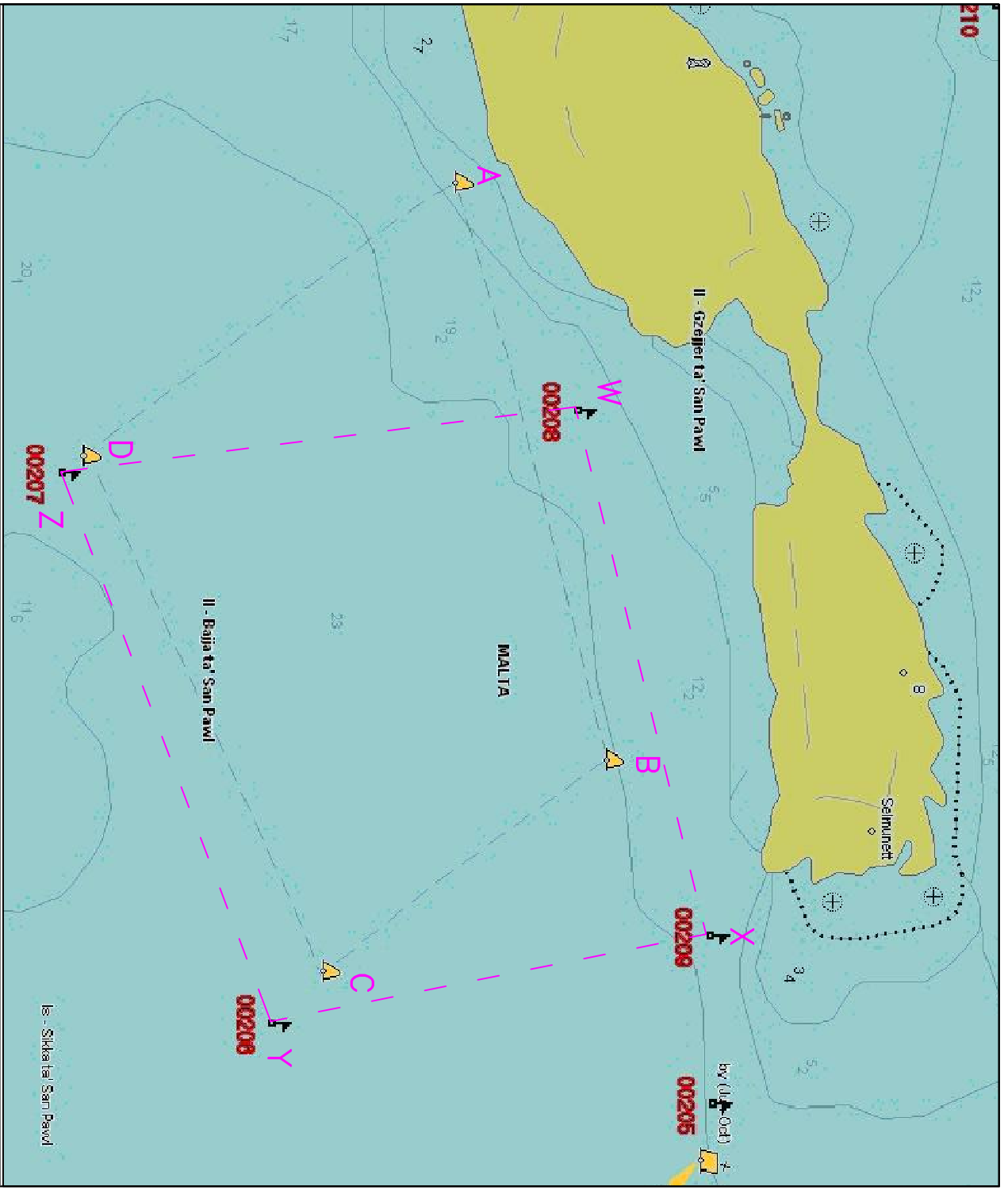
- 3) Insert special mark buoy symbols in the following positions

	Latitude (N)	Longitude (E)
W	35° 57'.892	14° 24'.202
X	35° 57'.949	14° 24'.482
Y	35° 57'.760	14° 24'.529
Z	35° 57'.669	14° 24'.235

- 4) Insert fish farm boundary pecked line joining the above points W, X, Y and Z.

Part of Chart attached for reference.

Chart Affected: BA Chart 177,



© British Crown Copyright 1970, 1983, 1986, 1988, 1999, 2000.
 All rights reserved.
 The UK Hydrographic Office makes the accompanying data available to Transport Malta under the terms and conditions of agreement HD 142/020930/01.

DISCLAIMER

Whilst the UK Hydrographic Office has endeavoured to ensure that the material supplied is suitable for the purpose described, it accepts no liability (to the maximum extent permitted by law) for any damage or loss of any nature arising from its use. The material supplied is used entirely at the Recipient's own risk.