



PORTS AND YACHTING DIRECTORATE

LOCAL NOTICE TO MARINERS N° 121 of 2026

Our Ref: **TM/PYD/132/89**

06 July 2026



Transport Malta

Malta Transport Centre,
Triq Pantar, Hal Lija, LJA 2021
Malta

Tel: (356) 2122 2203
Fax: (356) 2125 0365
Email: info.tm@transport.gov.mt

www.transport.gov.mt

Filming at different localities - JSSMB

The Ports and Yachting Directorate, Transport Malta, notifies all mariners, owners of vessels and divers, that filming activities will take place at different localities.

Filming will take place on between Tuesday 7th July 2026 and Friday 31st July 2026, at the locations and times as follow:

Marsaxlokk Harbour + Marsaxlokk Pier

Filming within this location will take place from Tuesday 7th July 2026 till Friday 10th July 2026 between 0600 hours and 1900 hours, as shown on Chart A.

Valletta Quarry Wharf – Old Fisheries

Filming within this location will take place on Sunday 19th July 2026 between 0600 hours and 2359 hours, as shown on Chart B.

Senglea

Filming within this location will take place from Tuesday 21st July 2026 till Friday 23rd July 2026 between 0600 hours and 1900 hours, as shown on Chart C.

Mariners are to keep 30m away from the area indicated when directed by the TM Enforcement Unit on site.

Coral Cave – Għar iċ-Ċomb

Filming within this location will take place on Wednesday 29th July 2026 between 0600 hours and 1900 hours, as shown on Chart D.



Transport Malta

Il-Qarraba – Gnejna Bay

Filming within this location will take place on Wednesday 29th July 2026 between 0600 hours and 1900 hours, as shown on Chart E.

In the event of adverse weather conditions preventing filming on any of the above scheduled date, the filming will be rescheduled to any date between Tuesday 7th July 2026 and Friday 31st July 2026.

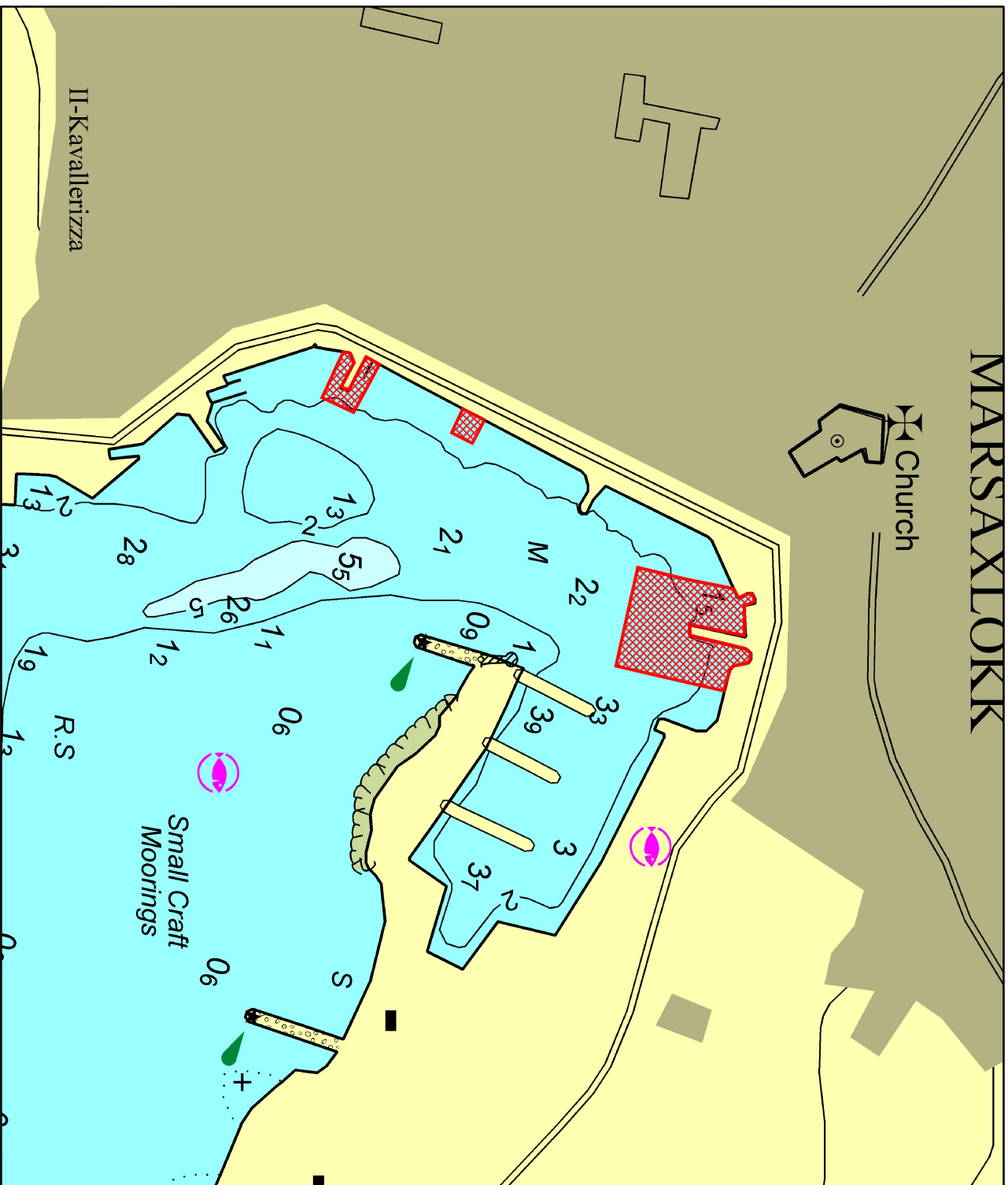
During these days and times, for filming purposes, vessels transiting the areas, 200m from the indicated positions on the attached charts, shall, except in the case of emergency, not drop anchor and no loitering is allowed; they are to remain underway.

All mariners, owners of vessels and divers are advised that entry into the areas is to be avoided on the above-mentioned dates and times.

Mariners are advised to navigate with caution at slow speed (No Wake) and give a wide berth when in the vicinity. They are also to keep out of the above-mentioned area and to comply with instructions and directions issued on VHF channel 12 and/or 16 by Valletta VTS and by any Enforcement Officers on site.

Charts Affected: **36, 177, 211, 2538**

MARSAXLOKK



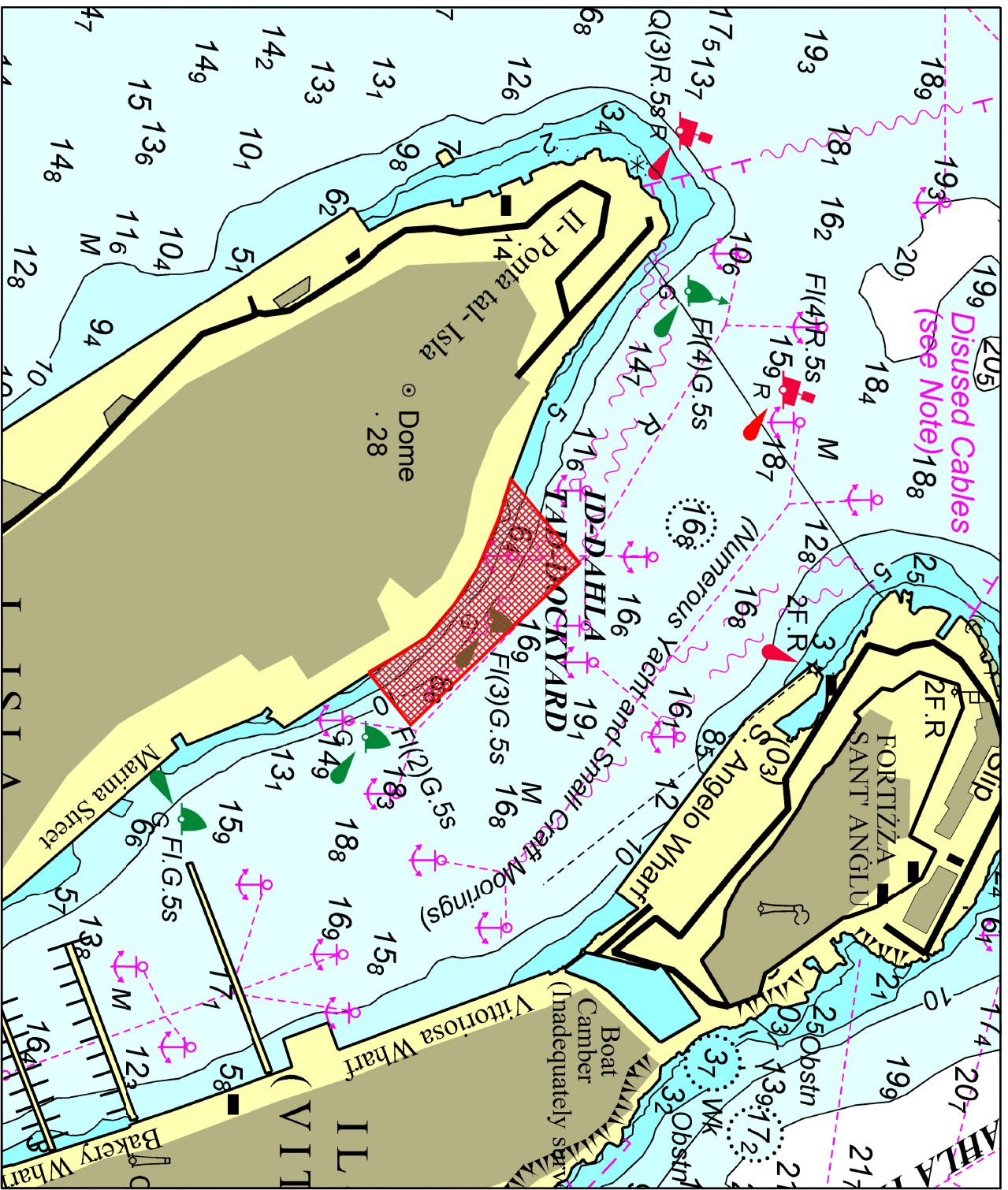
© Transport Malta all rights reserved

DISCLAIMER

Whilst the Ports and Yachting Directorate, Transport Malta has endeavoured to ensure that the material supplied is suitable for the purpose described, it accepts no liability (to the maximum extent permitted by law) for any damage or loss of any nature arising from its use.

The material supplied is used entirely at the Recipient's own risk.

Chart A



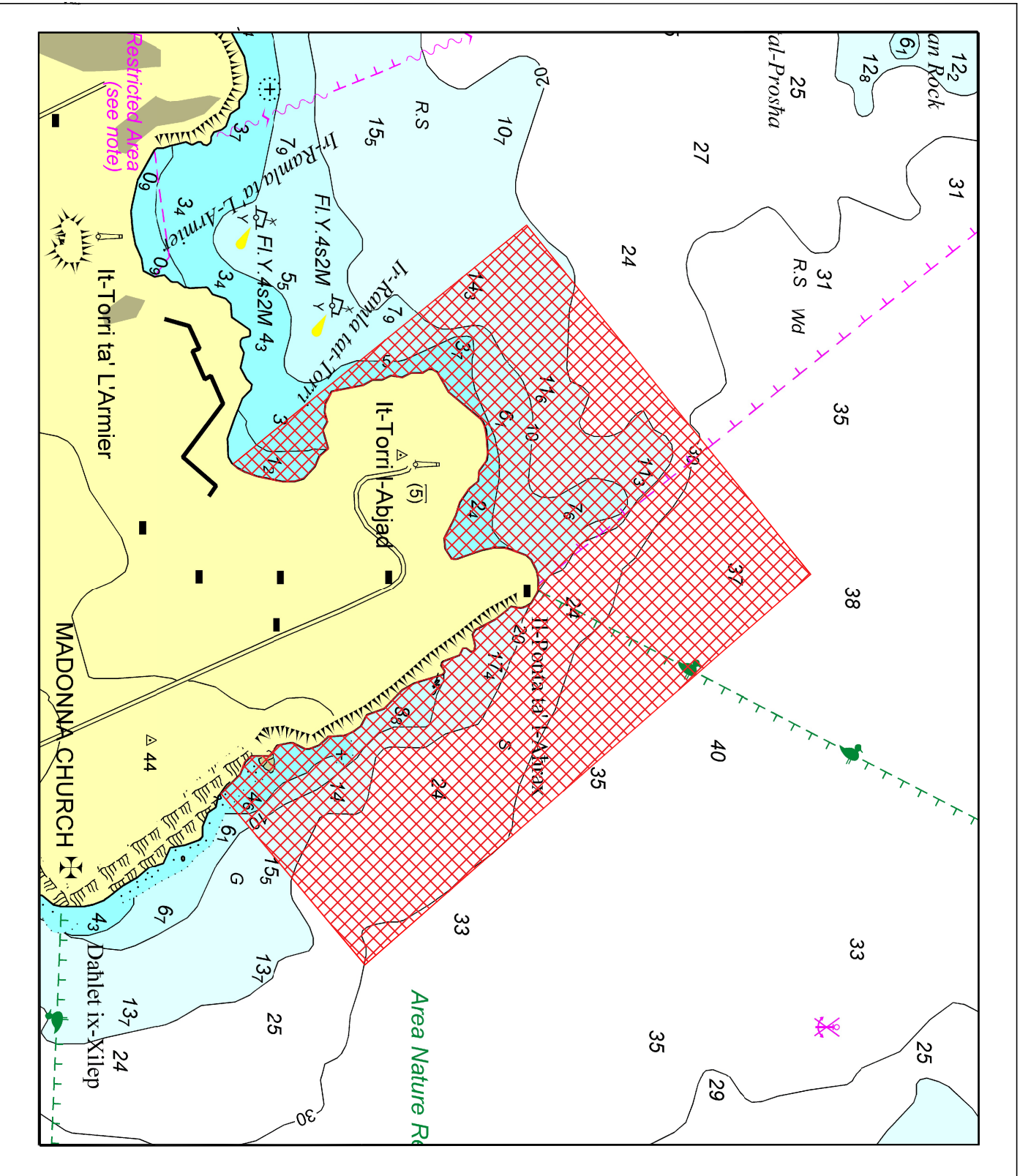
© Transport Malta all rights reserved

DISCLAIMER

Whilst the Ports and Yachting Directorate, Transport Malta has endeavoured to ensure that the material supplied is suitable for the purpose described, it accepts no liability (to the maximum extent permitted by law) for any damage or loss of any nature arising from its use.

The material supplied is used entirely at the Recipient's own risk.

Chart C

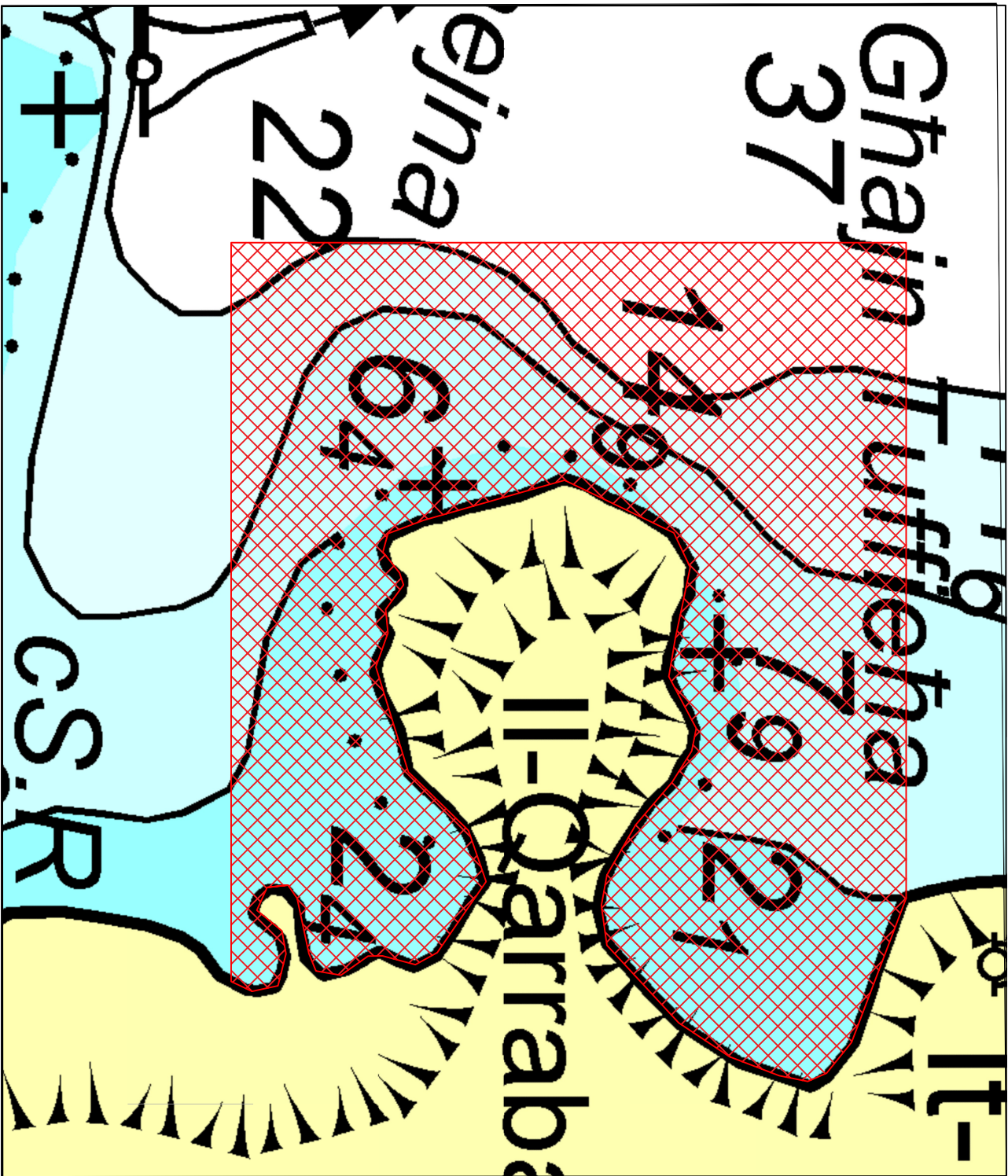


© Transport Malta all rights reserved

DISCLAIMER

Whilst the Ports and Yachting Directorate, Transport Malta has endeavoured to ensure that the material supplied is suitable for the purpose described, it accepts no liability (to the maximum extent permitted by law) for any damage or loss of any nature arising from its use.
The material supplied is used entirely at the Recipient's own risk.

Chart D



© Transport Malta all rights reserved

DISCLAIMER

Whilst the Ports and Yachting Directorate, Transport Malta has endeavoured to ensure that the material supplied is suitable for the purpose described, it accepts no liability (to the maximum extent permitted by law) for any damage or loss of any nature arising from its use.

The material supplied is used entirely at the Recipient's own risk.

Chart E