



**Transport Malta**

Malta Transport Centre  
Marsa, MRS 1917  
Malta

Tel: (356) 2122 2203  
Fax: (356) 2125 0365  
Email: [info.tm@transport.gov.mt](mailto:info.tm@transport.gov.mt)

[www.transport.gov.mt](http://www.transport.gov.mt)

**PORTS AND YACHTING DIRECTORATE**

## **LOCAL NOTICE TO MARINERS NO 85 of 2012**

Our Ref: TM/PYD/ 83/97 Vol VII

12 December, 2012

### **International Euromed Sailing Championship 2012 – Mellieha Bay**

The Ports and Yachting Directorate, Transport Malta notifies that the Malta Young Sailors Club will be holding the International Euromed Sailing Championship 2012, organised under the authority of the Malta Sailing Federation, between 19<sup>th</sup> and 22<sup>st</sup> December 2012.

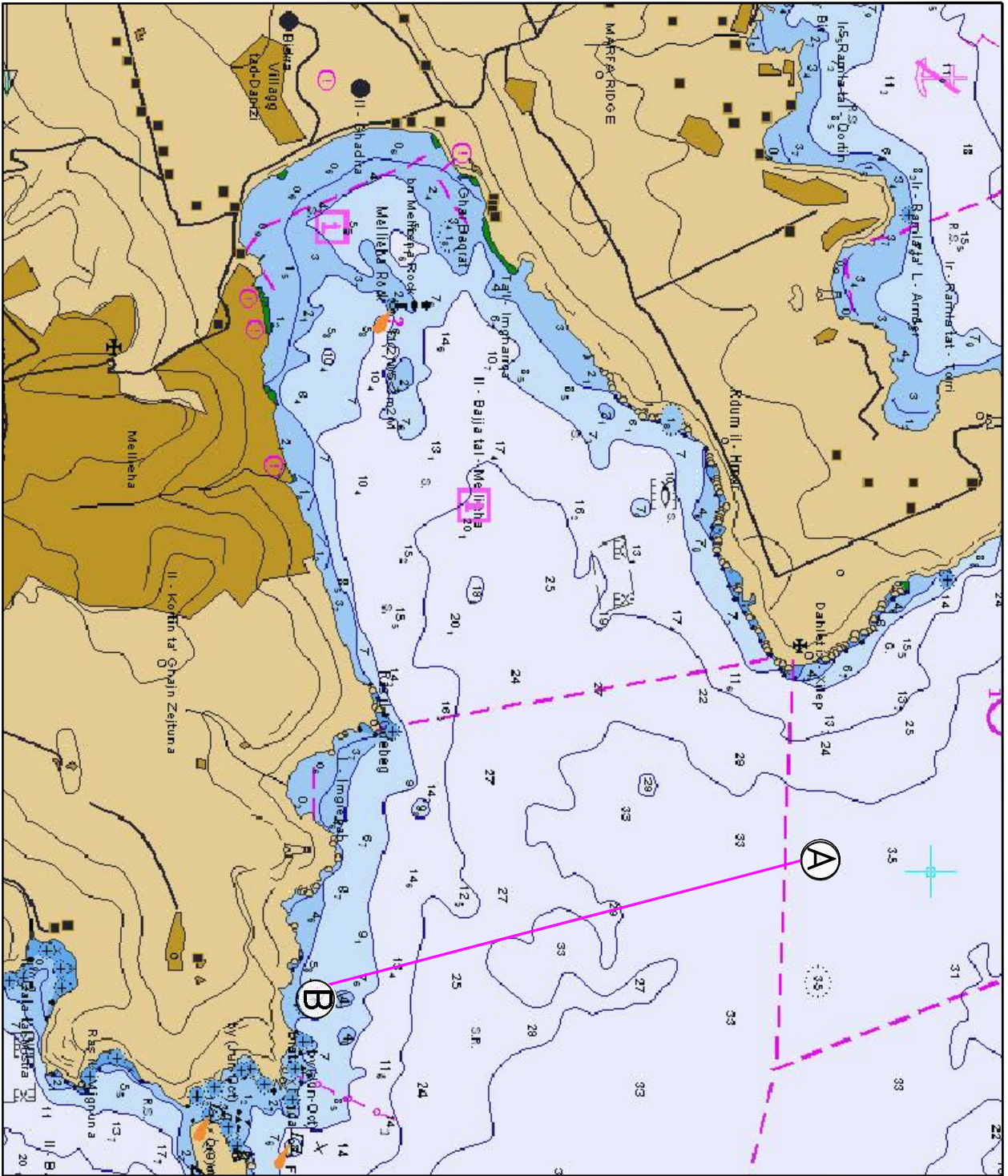
The activity will take place in Mellieha Bay and approaches in an area delineated by an imaginary line along the Eastern limits indicated as A and B on the attached Chart.

Yellow or orange inflatable marker buoys, in a rectangular configuration shall be laid between 0930 hrs and 1600 hrs daily during the regatta.

All sea craft not involved in the race are to keep well clear from the competing boats and follow any instructions given by the race officials and support craft.

The race management shall be using VHF Channel 72 as a working channel with Channel 71 as a reserve channel. As far as reasonably practicable local traffic is requested to avoid these channels during the event. Further instructions may issued by Valletta VTS on channel 12.

Chart affected BA 211A, 2538, 2537.



©British Crown Copyright 1970, 1983, 1986, 1988, 1999, 2000.  
All rights reserved

The UK Hydrographic Office makes the accompanying data available to Transport NI under the terms and conditions of agreement NI 1427/08090/01.

**DISCLAIMER**

Whilst the UK Hydrographic Office has endeavoured to ensure that the material supplied is suitable for the purpose described, it accepts no liability (to the maximum extent permitted by law) for any damage or loss of any nature arising from its use. The material supplied is used entirely at the Recipient's own risk.