



PORTS AND YACHTING DIRECTORATE

Transport Malta

LOCAL NOTICE TO MARINERS NO 79 OF 2012

Our Ref: TM/PYD/63/95

23 October 2012

Malta Transport Centre
Marsa, MRS 1917
Malta

Tel: (356) 2122 2203
Fax: (356) 2125 0365
Email: info.tm@transport.gov.mt

www.transport.gov.mt

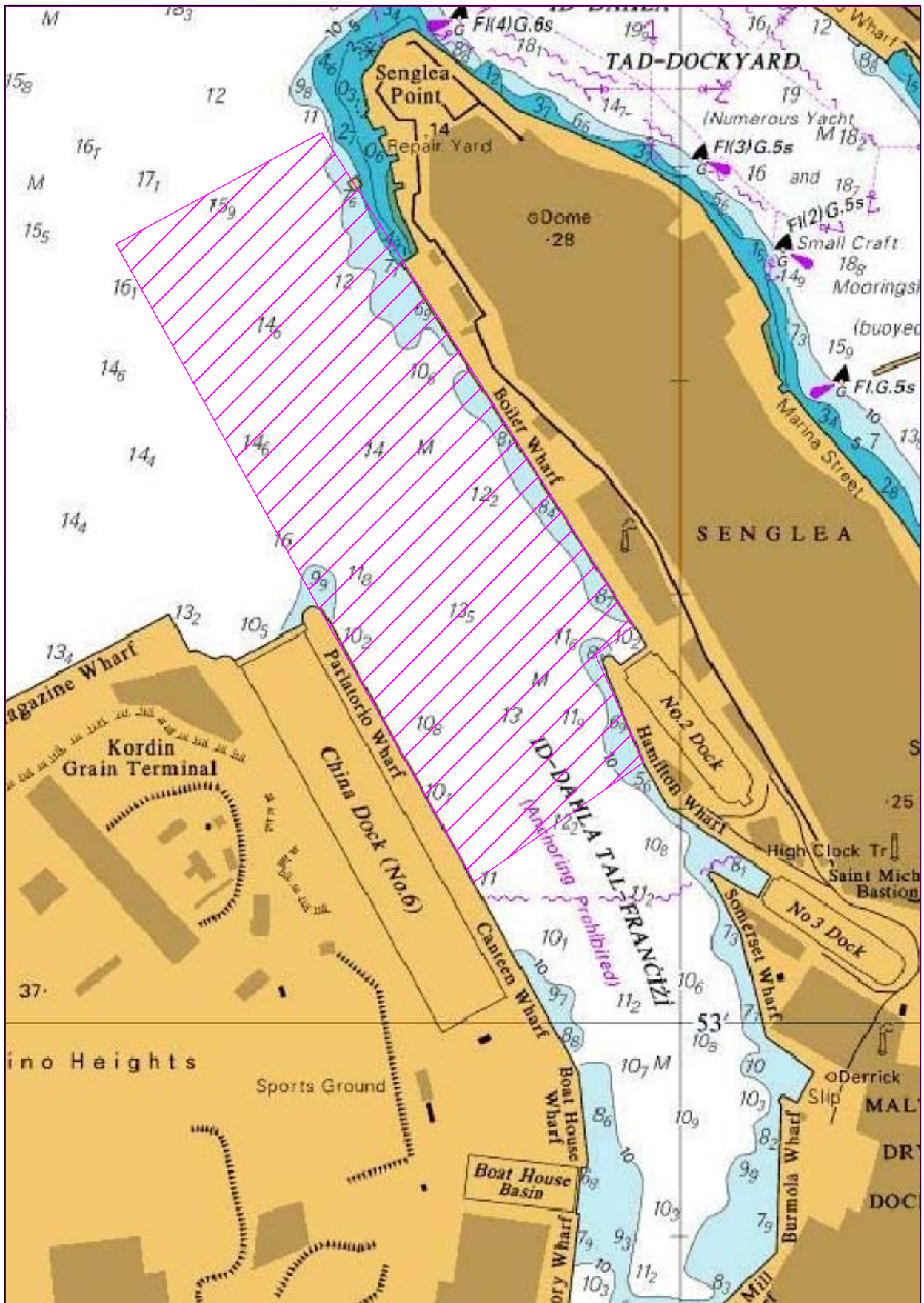
Marine Surveys in French Creek – Grand Harbour

The Ports and Yachting Directorate, Transport Malta notifies Mariners that a marine survey will be carried in French Creek – Grand Harbour as shown on the attached chart. The surveys will start on 29 October 2012 and are estimated to last for 3 days (weather permitting).

The vessel ISIS will conduct the survey and will be towing survey equipment. Minimum length of tow is 50m. The vessel will be restricted in manoeuvrability.

Mariners are to note the above and give a wide berth of 100 m when this vessel is sighted on the above dates. Any instructions issued by Valletta VTS (Valletta Port Control) on VHF Channel 12 are to be complied with to.

Positions referred to WGS 84 DATUM



©British Crown Copyright 1970, 1983, 1986, 1988, 1999, 2000.
All rights reserved

The UK Hydrographic Office makes the accompanying data available to Transport Malta under the terms and conditions of agreement HD 1427/020930/01.

DISCLAIMER

Whilst the UK Hydrographic Office has endeavoured to ensure that the material supplied is suitable for the purpose described, it accepts no liability (to the maximum extent permitted by law) for any damage or loss of any nature arising from its use. The material supplied is used entirely at the Recipient's own risk.