



Transport Malta

Malta Transport Centre
Marsa, MRS 1917
Malta

Tel: (356) 2122 2203
Fax: (356) 2125 0365
Email: info.tm@transport.gov.mt

www.transport.gov.mt

PORTS AND YACHTING DIRECTORATE

LOCAL NOTICE TO MARINERS NO 76 of 2012

Our Ref: TM/PYD/83/97 Vol V

9 October 2012

Malta Canoe Federation - Canoe Race at Marsamxett Harbour

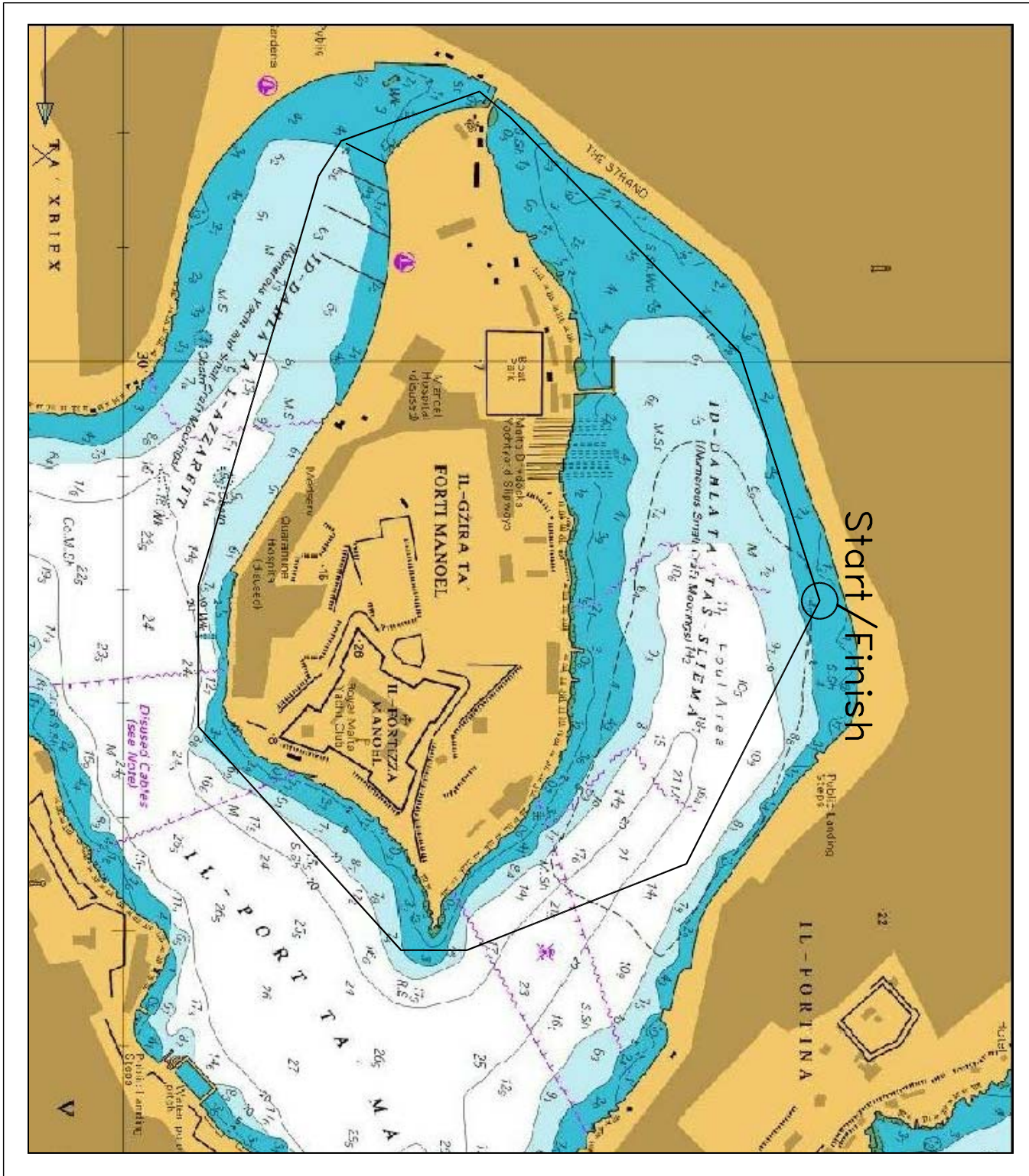
The annual canoe / kayak race will be held on Sunday, 21 October 2012 at Marsamxett Harbour between 0900 and 1300 hours.

The start and finish will be at the Strand – Sliema, opposite to the Sliema Hotel. The races will proceed in clockwise laps around Manoel Island and will mainly follow the route as per attached chartlet.

Mariners navigating in Sliema Creek are to take note of the above and keep a sharp lookout for the canoeists, to give a wide berth and navigate at very slow speed.

Should weather conditions be unfavourable, the races will be held along the Strand coast.

Chart Affected BA Chart 177



Start/Finish

©British Crown Copyright 1970, 1983, 1986, 1988, 1999, 2000.
 All rights reserved
 The UK Hydrographic Office makes the accompanying data available to Transport Malta under the terms and conditions of agreement HD 1427/020930/01.

DISCLAIMER

Whilst the UK Hydrographic Office has endeavoured to ensure that the material supplied is suitable for the purpose described, it accepts no liability (to the maximum extent permitted by law) for any damage or loss of any nature arising from its use. The material supplied is used entirely at the Recipient's own risk.