



**Transport Malta**

Malta Transport Centre  
Marsa, MRS 1917  
Malta

Tel: (356) 2122 2203  
Fax: (356) 2125 0365  
Email: [info.tm@transport.gov.mt](mailto:info.tm@transport.gov.mt)

[www.transport.gov.mt](http://www.transport.gov.mt)

PORTS AND YACHTING DIRECTORATE

## LOCAL NOTICE TO MARINERS NO 66 of 2012

Our Ref: TM/PYD/96/07

20 August 2012

### **Benthic Survey and Research activities by divers off the Strand, Sliema Creek - Marsamxett Harbour.**

The Ports and Yachting Directorate, Transport Malta, notifies mariners that a benthic survey and research activities will be carried out off the Strand in Sliema Creek (Id-Dahla ta' tas-Sliema) in Marsamxett Harbour by scuba divers.

These works will be carried out between points A and B and the intermediate coastline:

	<b>LATITUDE (N)</b>	<b>LONGITUDE (E)</b>
<b>A</b>	<b>35° 54.325'</b>	<b>14° 29.961'</b>
<b>B</b>	<b>35° 54.485'</b>	<b>14° 30.103'</b>

As per attached chart.

The benthic survey and research activities are expected to commence on Friday 24 August 2012 and completed by Friday 7 September 2012.

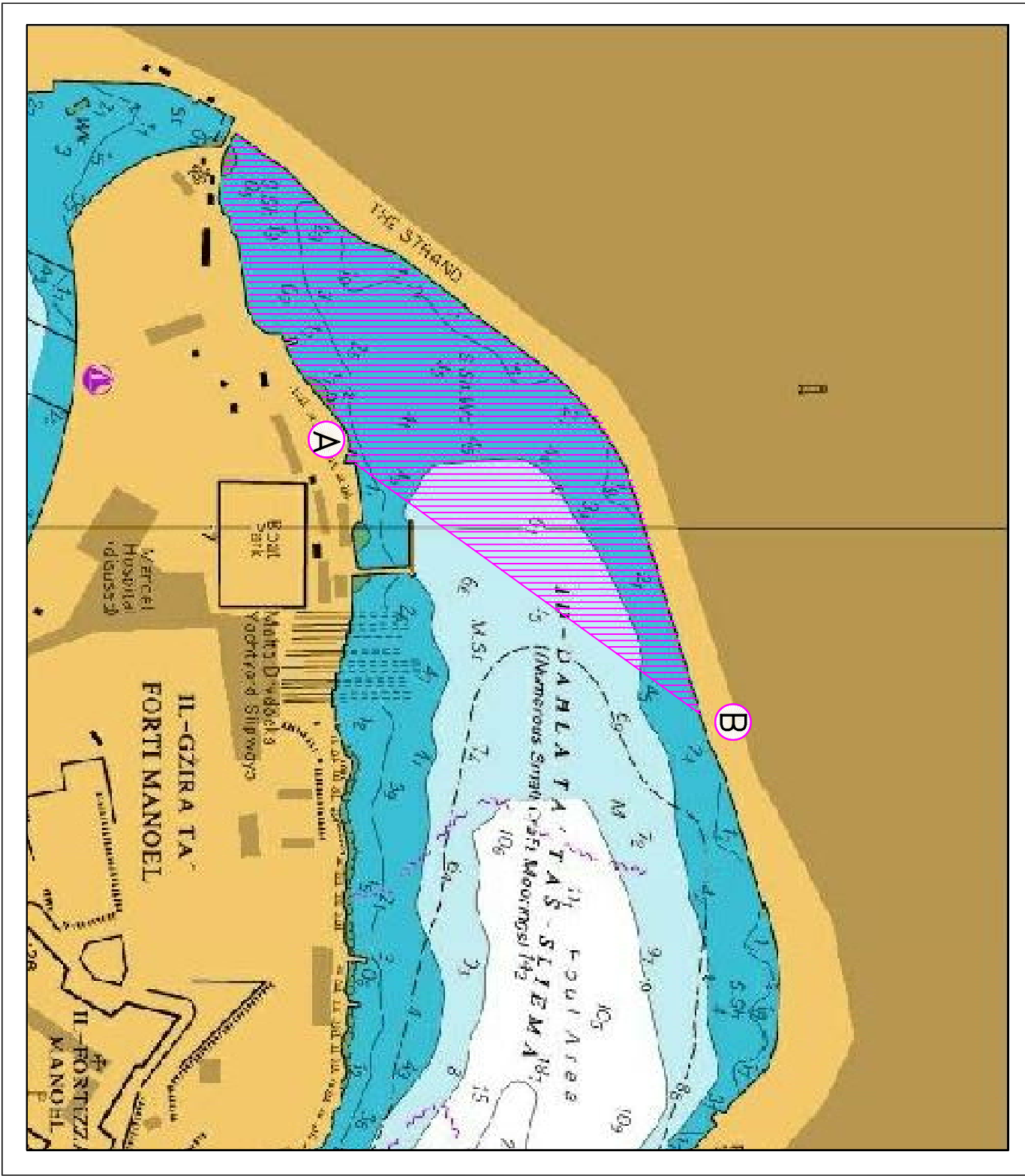
The divers will be accompanied by a support boat that will display the International Code of Signals Flag "A"

Mariners and operators of sea craft are advised to keep a sharp lookout, proceed at very slow speed and give the above area a wide berth of at least 100 metres.

Instructions given by Valletta Port Control (VTS) on VHF Channel 12 are to be complied with.

Chart affected: BA 177

Positions referred to WGS 84 DATUM.



©British Crown Copyright 1970, 1983, 1986, 1988, 1999, 2000.  
All rights reserved

The UK Hydrographic Office makes the accompanying data available to Transport Malta under the terms and conditions of agreement HD 1427/020930/01.

**DISCLAIMER**

Whilst the UK Hydrographic Office has endeavoured to ensure that the material supplied is suitable for the purpose described, it accepts no liability (to the maximum extent permitted by law) for any damage or loss of any nature arising from its use. The material supplied is used entirely at the Recipient's own risk.