



**Transport Malta**

Malta Transport Centre  
Marsa, MRS 1917  
Malta

Tel: (356) 2122 2203  
Fax: (356) 2125 0365  
Email: [info.tm@transport.gov.mt](mailto:info.tm@transport.gov.mt)

[www.transport.gov.mt](http://www.transport.gov.mt)

PORTS AND YACHTING DIRECTORATE

## **LOCAL NOTICE TO MARINERS NO 60 of 2012**

Our Ref: **TM/PYD/63/95 Vol IV**

**6 August, 2012**

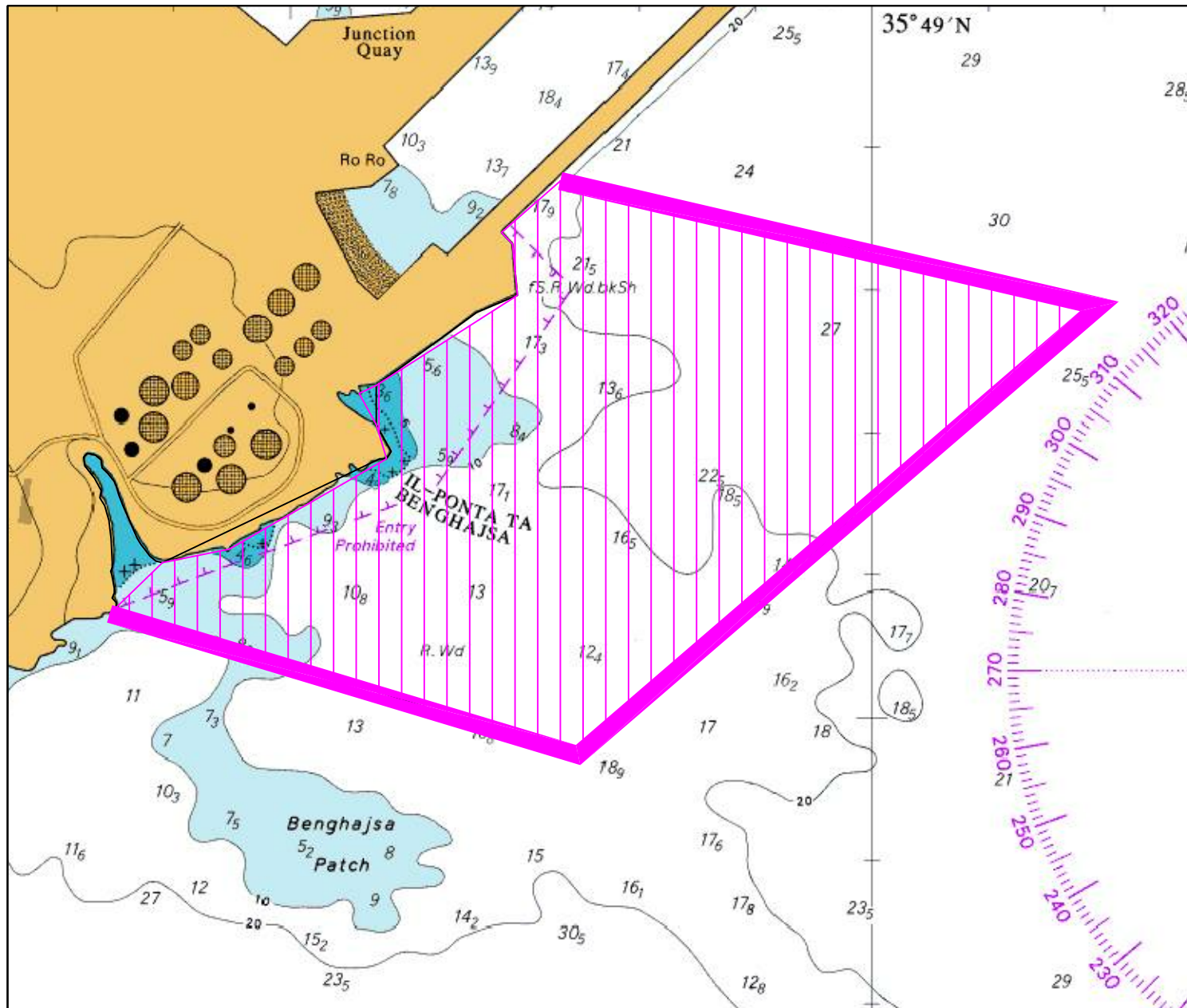
### **Marine Survey at il-Ponta ta' Benghajsa – Marsaxlokk Approaches**

The Ports and Yachting Directorate, Transport Malta notifies Mariners that a research survey will be carried out at il-Ponta ta' Benghajsa – in the approaches to Marsaxlokk Harbour between 8 August 2012 and 20 August 2012, weather permitting. The area is shown hatched on the attached chart:

The motor vessel ISIS will be towing instruments at a distance of 100m away. In this respect mariners are to give a wide berth of 300 metres. The research vessel will be towing instruments, while at the same time maintaining its position and recording data. Therefore, the vessel may not be in a position to alter its course suddenly.

Mariners are advised to navigate with caution and at slow speed when in the vicinity of the above-indicated areas. Mariners are also notified to abide with any instructions from Marsaxlokk Port Control, (VTS) on VHF Channel 14.

Chart Affected: BA Chart 36, 2538



©British Crown Copyright 1970, 1983, 1986, 1988, 1999, 2000.  
All rights reserved

The UK Hydrographic Office makes the accompanying data available to Transport Malta under the terms and conditions of agreement HD 1427/020930/01.

**DISCLAIMER**

Whilst the UK Hydrographic Office has endeavoured to ensure that the material supplied is suitable for the purpose described, it accepts no liability (to the maximum extent permitted by law) for any damage or loss of any nature arising from its use. The material supplied is used entirely at the Recipient's own risk.