



Transport Malta

Malta Transport Centre
Marsa, MRS 1917
Malta

Tel: (356) 2122 2203
Fax: (356) 2125 0365
Email: info.tm@transport.gov.mt

www.transport.gov.mt

PORTS AND YACHTING DIRECTORATE

LOCAL NOTICE TO MARINERS NO 56 of 2012

Our Ref: TM/PYD/96/07

13 July 2011

Drilling Works for Geotechnical Investigations off the Strand, Sliema Creek - Marsamxett Harbour.

The Ports and Yachting Directorate, Transport Malta, notifies mariners that drilling works for geotechnical investigations will be carried out off the Strand in Sliema Creek (Id-Dahla ta' tas-Sliema) in Marsamxett Harbour.

These works will be carried in the sector of radius 100m centered on approximate position:

LATITUDE (N)	LONGITUDE (E)
35° 54.438'	14° 29.943'

As per attached chart.

The works are expected to be commence on Monday 6 August 2012 and completed by Friday 10 August 2012.

They will be carried out from a flat barge which will be accompanied by a small tug boat. The barge may deploy anchors to hold it in position and may remain in the area during the night.

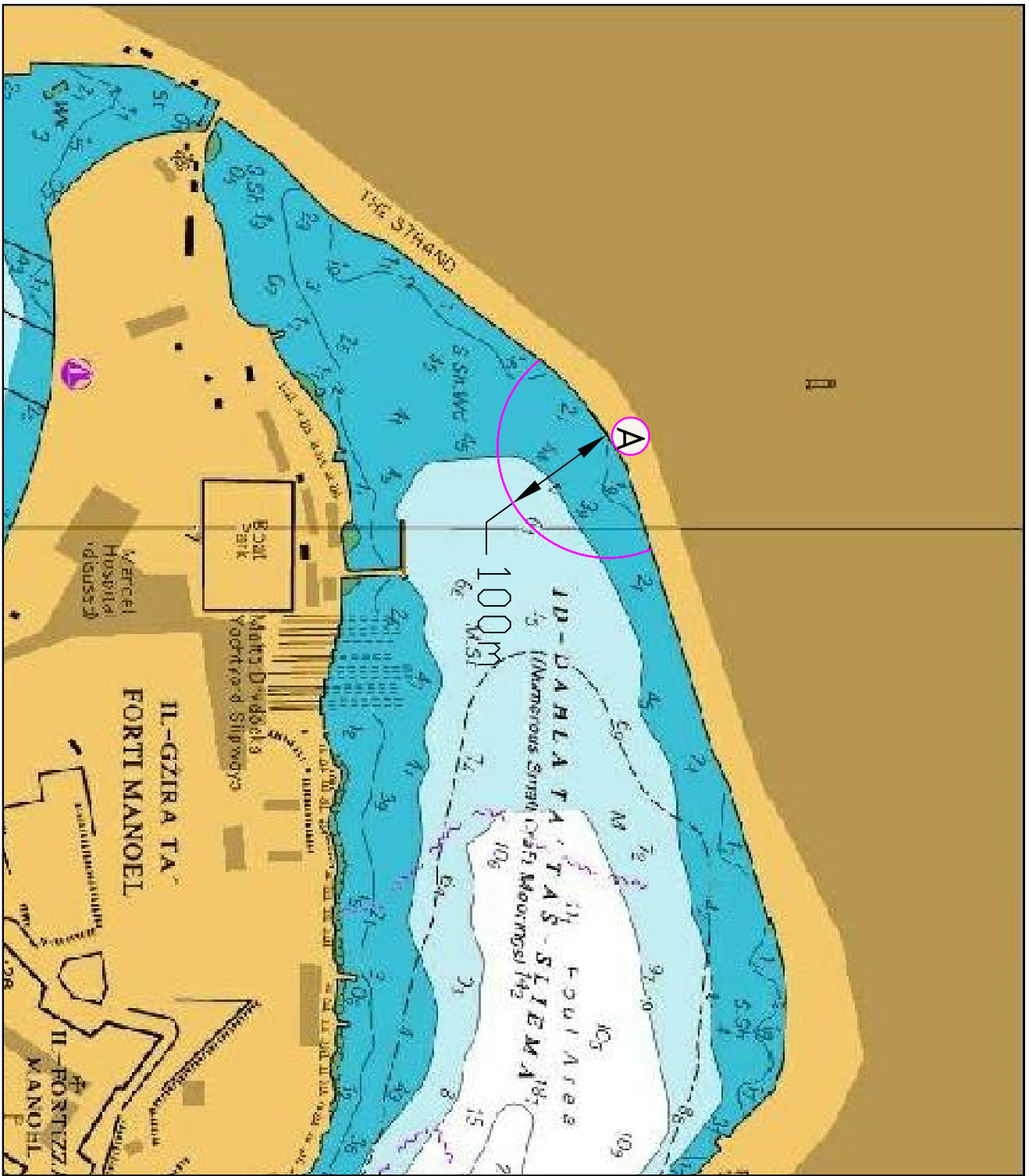
Owners of sea craft moored in the area are to cooperate with the drilling barge operator to temporarily remove their craft or moorings until these works are completed.

Further more mariners and operators of sea craft are advised to keep a sharp lookout, proceed at very slow speed and give the above area a wide berth of at least 100 metres.

Instructions given by Valletta Port Control (VTS) on VHF Channel 12 are to be complied with.

Chart affected: BA 177

Positions referred to WGS 84 DATUM.



©British Crown Copyright 1970, 1983, 1986, 1988, 1999, 2000.
All rights reserved

The UK Hydrographic Office makes the accompanying data available to Transport Malta under the terms and conditions of agreement HD 1427/020930/01.

DISCLAIMER

Whilst the UK Hydrographic Office has endeavoured to ensure that the material supplied is suitable for the purpose described, it accepts no liability (to the maximum extent permitted by law) for any damage or loss of any nature arising from its use. The material supplied is used entirely at the Recipient's own risk.