



PORTS AND YACHTING DIRECTORATE

LOCAL NOTICE TO MARINERS N° 192 of 2025

Our Ref: **TM/PYD/63/95**

20 October 2025



Transport Malta

Malta Transport Centre,
Triq Pantar, Hal Lija, LJA 2021
Malta

Tel: (356) 2122 2203
Fax: (356) 2125 0365
Email: info.tm@transport.gov.mt

www.transport.gov.mt

Diving inspection of the electricity cables between Manoel Island and Tigne

The Ports and Yachting Directorate, Transport Malta, notifies mariners and owners of vessels that a diving inspection of the electricity cables between Manoel Island and Tigne will be held.

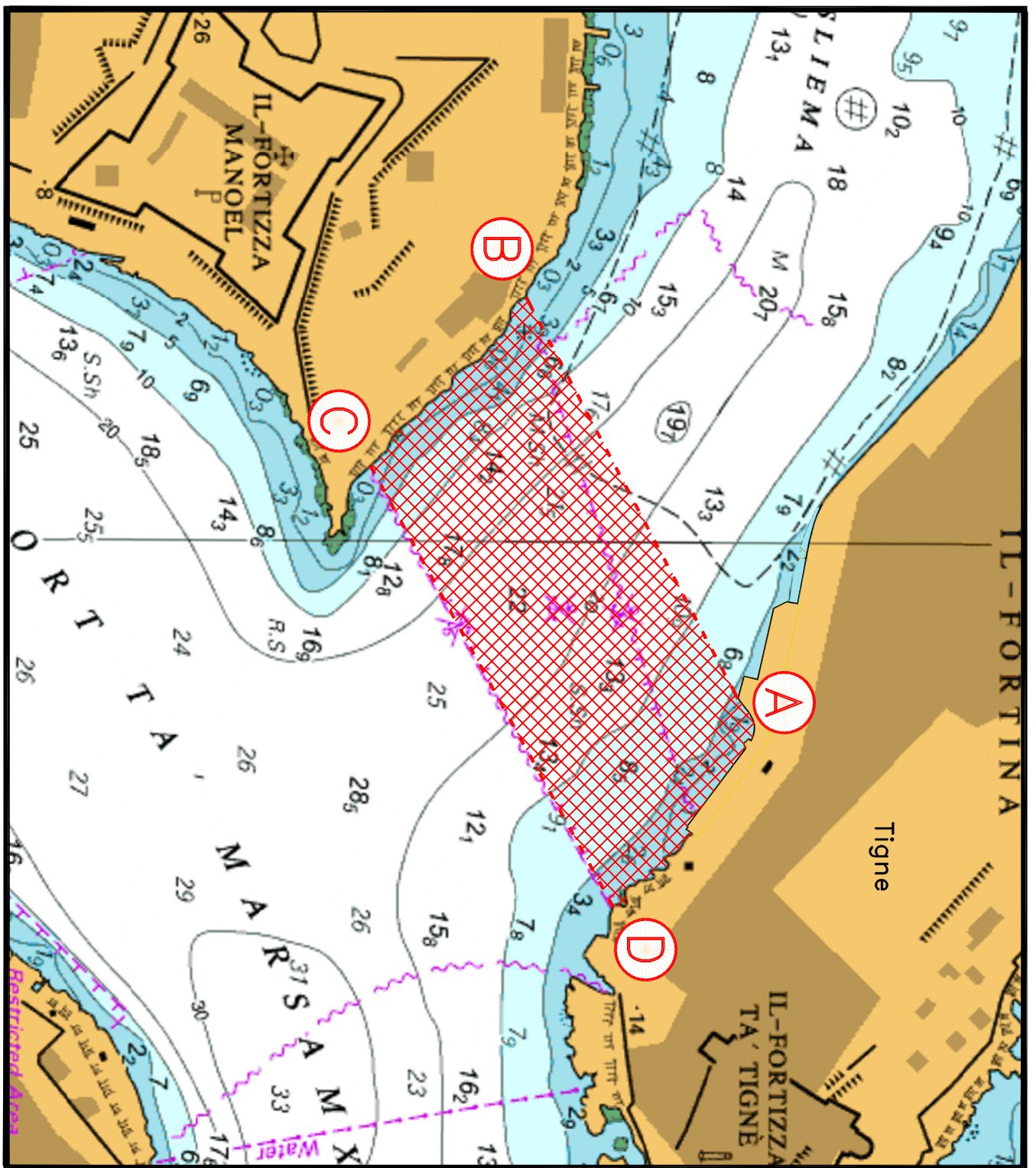
The diving inspection will be held within the area formed by joining the points A to B, C to D and the intermediate coastline, as shown on the attached chart, will be carried out between Monday 27th October 2025 and Wednesday 5th November 2025, from 0800 hours to 1700 hours daily.

The divers will be assisted by the vessels “*Julie Pearl*” and “*Atlantis 2*” which will be displaying the International Code of Signals flag “A”.

During the above-mentioned days, all other vessels in the vicinity are to give the vessels “*Julie Pearl*” and “*Atlantis 2*” a wide berth of at least 100m when spotted.

Masters and operators of vessels are advised to keep a sharp lookout, proceed with caution and at safe speed when navigating in the above indicated areas. They are to comply with instructions given on VHF Channel 12 and/or 16 by Valletta VTS.

Chart affected: **BA 177**



© British Crown Copyright 1970, 1983, 1986, 1988, 1999, 2000
All rights reserved.

The UK Hydrographic Office makes the accompanying data
Available to Malta Maritime Authority (Transport Malta)
Under the terms and conditions of agreement HO 1427/020930/01.

DISCLAIMER

Whilst the UK Hydrographic Office has endeavoured to ensure
That the material supplied is suitable for the purpose described,
It accepts no liability (to the maximum extent permitted by law)
For any damage or loss of any nature arising from its use.
The material supplied is used entirely at the Recipient's own risk.