



PORTS AND YACHTING DIRECTORATE

Transport Malta

LOCAL NOTICE TO MARINERS NO 37 of 2012

Our Ref: TM/PYD/169/94

Malta Transport Centre
Marsa, MRS 1917
Malta

Tel: (356) 2122 2203
Fax: (356) 2125 0365
Email: info.tm@transport.gov.mt

14 June 2012

www.transport.gov.mt

Sampling from Seabed at Cirkewwa.

The Ports and Yachting Directorate, Transport Malta, notifies mariners that sampling from the seabed will be carried out at Cirkewwa, within the area A, B, C and the intermediate coastline as shown on the attached Chart. The works are expected to start on the 20th June 2012 and completed by the 30 June 2012 weather permitting.

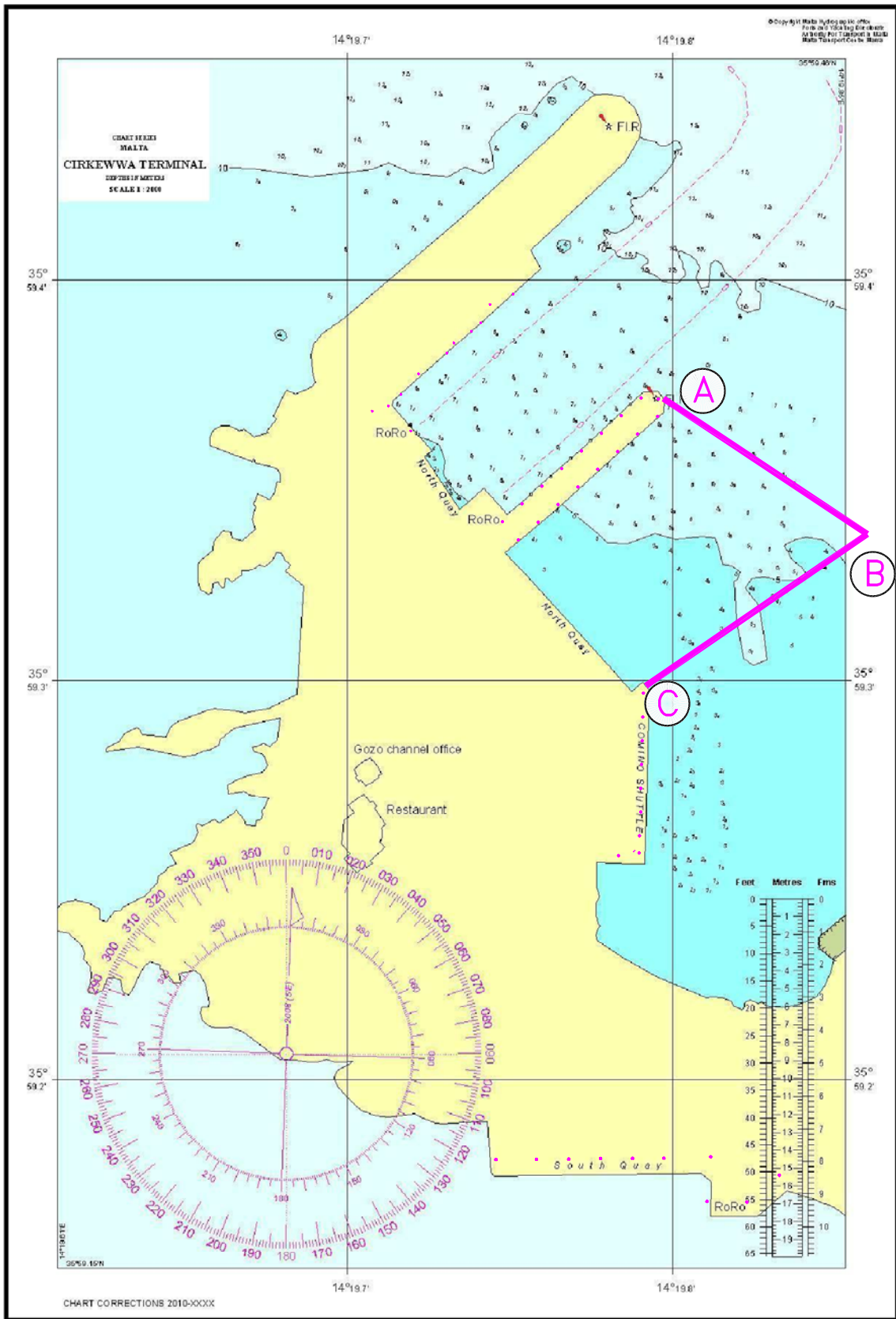
The survey will be carried out by divers who will display the international code of signals flag "A" from shore and have a diver's buoy with them.

Mariners and operators of sea craft are advised to keep a sharp lookout and proceed with caution and at very slow speed and give the area a wide berth of at least 100 metres.

Moreover, they are to comply with instructions given by Valletta Port Control (VTS) on VHF Channel 12.

Chart affected: BA 211A

Positions referred to WGS 84 DATUM.



© Transport Malta Copyright
All rights reserved

DISCLAIMER

Whilst Transport Malta has endeavoured to ensure that the material supplied is suitable for the purpose described, it accepts no liability (to the maximum extent permitted by law) for any damage or loss of any nature arising from its use. The material supplied is used entirely at the Recipient's own risk.