



PORTS AND YACHTING DIRECTORATE

Transport Malta

LOCAL NOTICE TO MARINERS NO 36 of 2012

Our Ref: TM/PYD/01/2012

Malta Transport Centre
Marsa, MRS 1917
Malta

Tel: (356) 2122 2203
Fax: (356) 2125 0365
Email: info.tm@transport.gov.mt

www.transport.gov.mt

14 June 2012

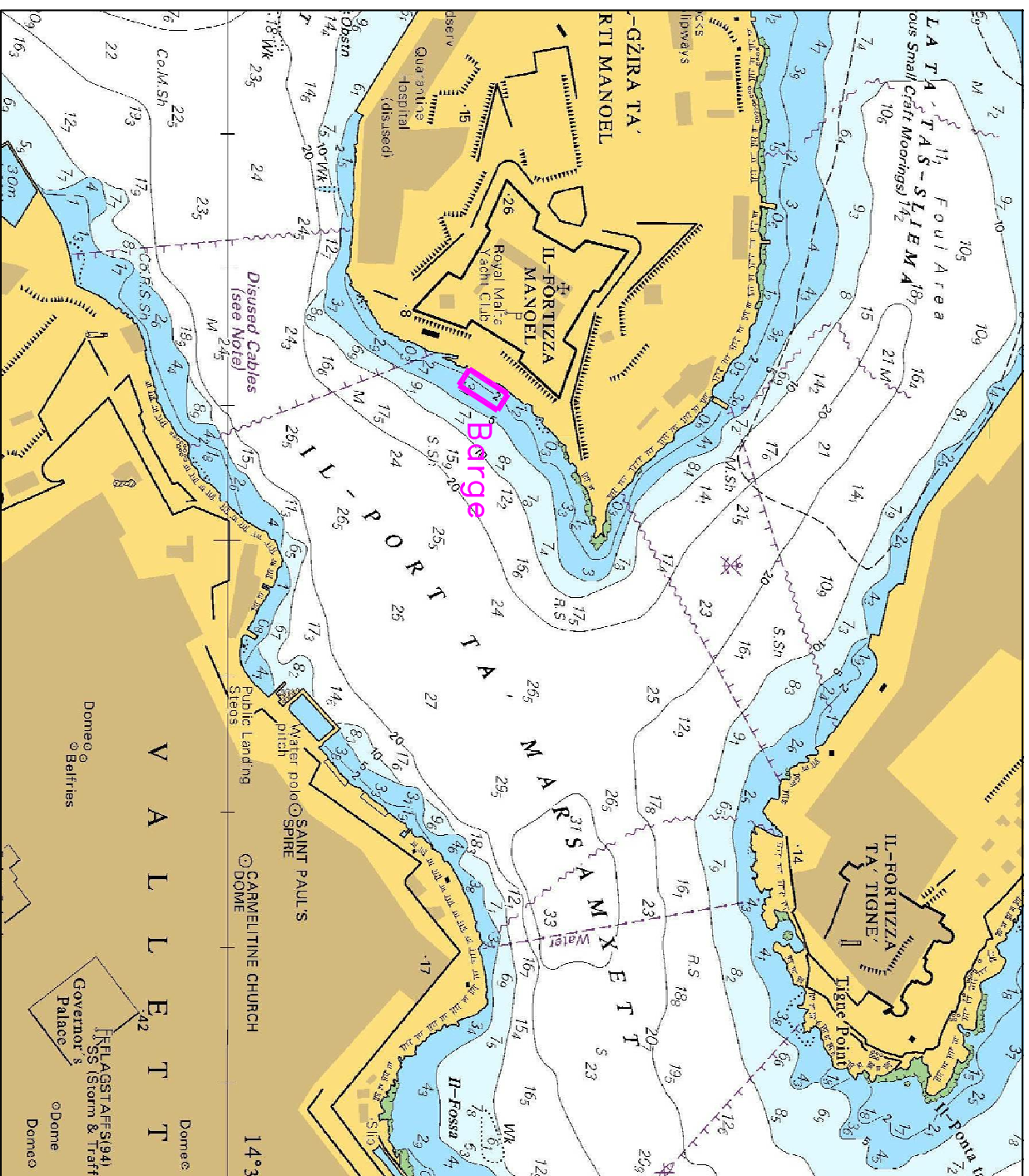
Barge Moored at Manoel Island.

The Ports and Yachting Directorate, Transport Malta, notifies mariners that a flat barge will be moored at Manoel island as indicated on the attached chart between the 22nd and 24th June 2012. Vessels with a maximum overall length of 40 meters will berth stern to, alongside this barge to load/unload passengers. The loading/unloading of passengers will take place also during the dark hours.

Mariners and operators of sea craft are advised to keep a sharp lookout, proceed with caution, at very slow speed and give the area a wide berth of at least 100 metres from the coast.

Moreover, they are to comply with instructions given by Valletta Port Control (VTS) on VHF Channel 12.

Chart affected: BA 177



©British Crown Copyright 1970, 1983, 1986, 1988, 1999, 2000.
All rights reserved

The UK Hydrographic Office makes the accompanying data available to Transport Malta under the terms and conditions of agreement HD 1427/020930/01.

DISCLAIMER

Whilst the UK Hydrographic Office has endeavoured to ensure that the material supplied is suitable for the purpose described, it accepts no liability (to the maximum extent permitted by law) for any damage or loss of any nature arising from its use. The material supplied is used entirely at the Recipient's own risk.