



PORTS AND YACHTING DIRECTORATE

Transport Malta

LOCAL NOTICE TO MARINERS NO 25 of 2012

Our Ref: **TM/PYD/63/95 Vol IV**

Date: **9 May, 2012**

Malta Transport Centre
Marsa, MRS 1917
Malta

Tel: (356) 2122 2203
Fax: (356) 2125 0365
Email: info.tm@transport.gov.mt

www.transport.gov.mt

Marine Survey West of Cirkewwa Point

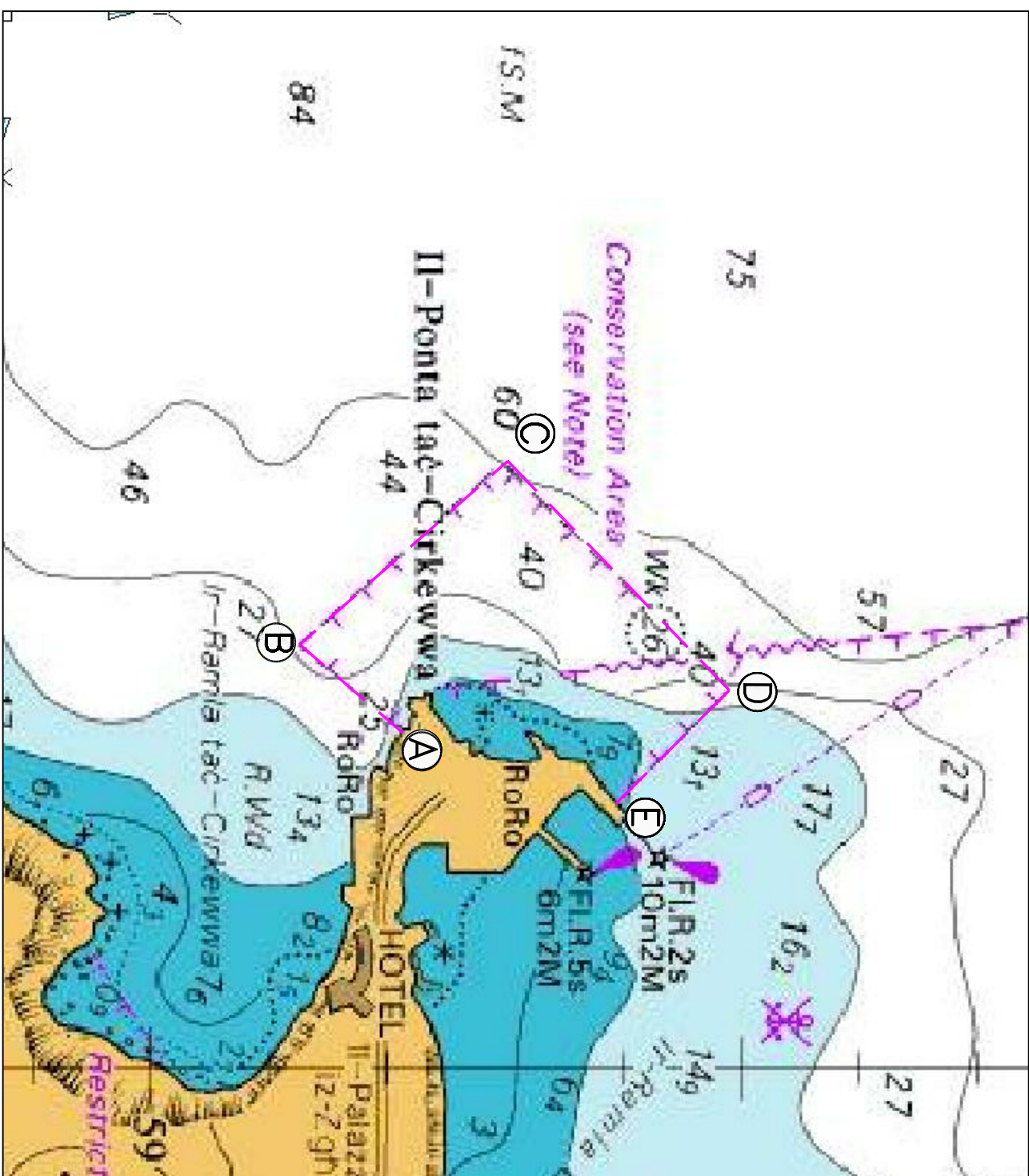
The Ports and Yachting Directorate, Transport Malta notifies Mariners that a marine research survey will be conducted within an area west of Cirkewwa Point, weather permitting the survey will be carried out within the next two weeks. The area is delineated by the following positions as shown on the attached chart:

Points	Latitude (N)	Longitude (E)
A	35° 59.224'	14° 19.645'
B	35° 59.148'	14° 19.555'
C	35° 59.299'	14° 19.365'
D	35° 59.491'	14° 19.588'
E	35° 59.387'	14° 19.716'

The motor vessel ISIS will be conducting the survey using a Remotely Operated Vehicle (R.O.V.). In this respect mariners are to give a wide berth of 100 metres. The research vessel will be towing instruments, while at the same time maintaining its position and recording data and will therefore have restricted manoeuvrability.

Mariners are advised to navigate with caution and at slow speed when in the vicinity and to abide with any instructions given by Valletta VTS (Valletta Port Control) on VHF Channel 12.

Chart Affected: BA Chart 211A, 2538, 2537, 194



©British Crown Copyright 1970, 1983, 1986, 1988, 1999, 2000.
All rights reserved

The UK Hydrographic Office makes the accompanying data
available to Transport Malta under the terms and
conditions of agreement HD 1427/080930/01.

DISCLAIMER

Whilst the UK Hydrographic Office has endeavoured to ensure
that the material supplied is suitable for the purpose described,
it accepts no liability (to the maximum extent permitted by law)
for any damage or loss of any nature arising from its use.
The material supplied is used entirely at the Recipient's own risk.