



PORTS AND YACHTING DIRECTORATE

Transport Malta

LOCAL NOTICE TO MARINERS NO 23 of 2012

Our Ref: TM/PYD/45/11

Malta Transport Centre
Marsa, MRS 1917
Malta

Tel: (356) 2122 2203
Fax: (356) 2125 0365
Email: info.tm@transport.gov.mt

03 May 2012

www.transport.gov.mt

Marsamxett Harbour Entry Prohibited at Msida Creek due to Maintenance and Refurbishment Works

The Ports and Yachting Directorate, Transport Malta would like to notify mariners that until further notice entry is prohibited within Msida Creek in Marsamxett Harbour due to refurbishment works including the replacement of the pontoons.

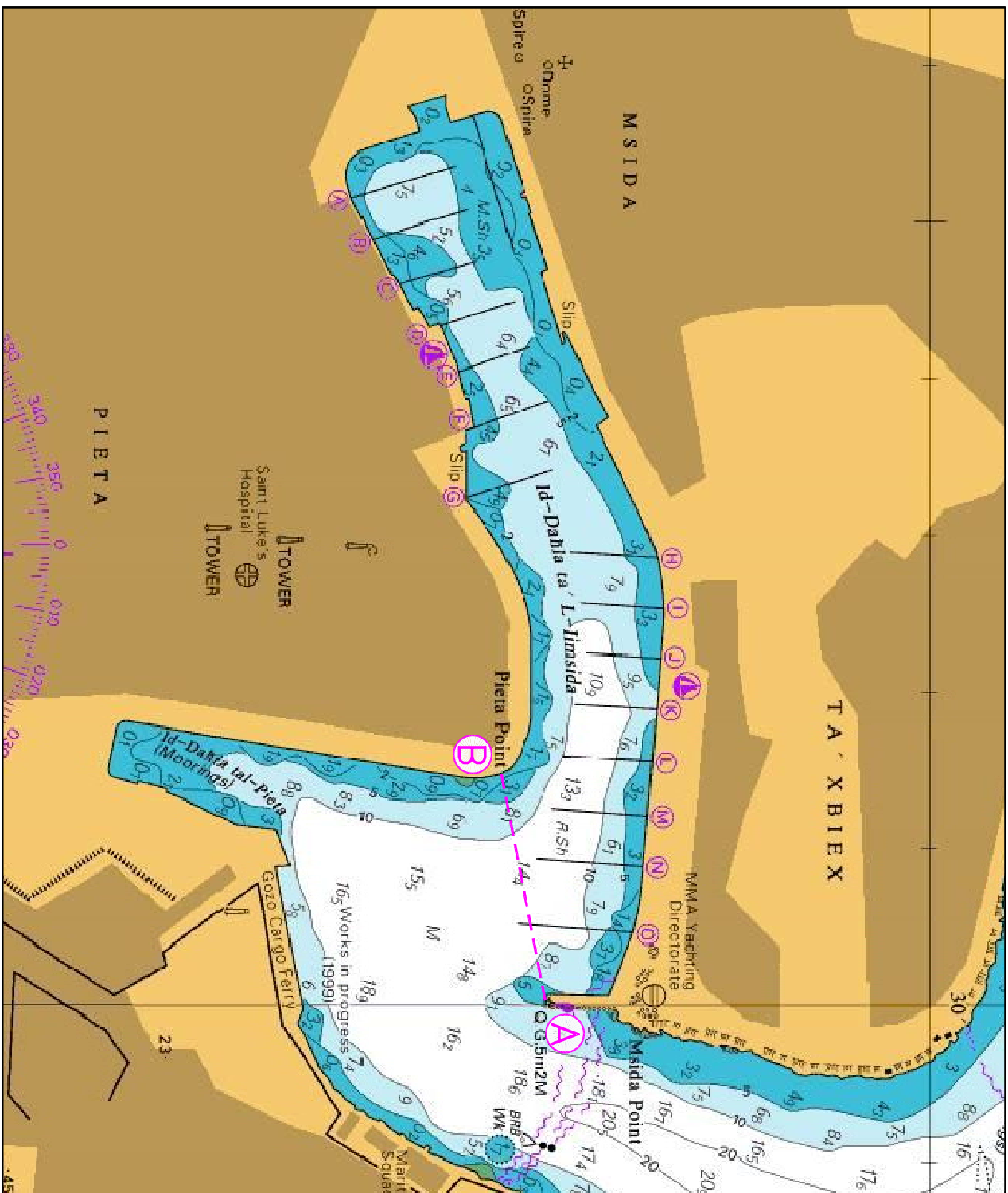
The prohibited area lies beyond an imaginary line between Msida Point Breakwater Head (A) and Pieta Point (B).

Point	LATITUDE (N)	LONGITUDE (E)
A	35° 53. 795'	014° 30. 001'
B	35° 53. 776'	014° 29.853'

In view of the above works mariners are to navigate with caution and very slow 'no wake' speed. They are to give the above area a wide berth, keep a sharp lookout for divers and obey instructions given by the Marina Operator or by the Valletta VTS (Valletta Port Control) on VHF Channel 12.

Position in WGS 84 Datum

Chart affected: BA 177



©British Crown Copyright 1970, 1983, 1986, 1988, 1999, 2000.
All rights reserved

The UK Hydrographic Office makes the accompanying data available to Malta Maritime Authority under the terms and conditions of agreement HD 1427/020930/01.

DISCLAIMER

Whilst the UK Hydrographic Office has endeavoured to ensure that the material supplied is suitable for the purpose described, it accepts no liability (to the maximum extent permitted by law) for any damage or loss of any nature arising from its use. The material supplied is used entirely at the Recipient's own risk.