



PORTS AND YACHTING DIRECTORATE

NOTICE TO MARINERS No 31 of 2025

Our Ref: **TM/PYD/70/02**

18 August 2025



Transport Malta

Malta Transport Centre,
Triq Pantar, Hal Lija, LJA 2021
Malta

Tel: (356) 2122 2203
Fax: (356) 2125 0365
Email: info.tm@transport.gov.mt

www.transport.gov.mt

Investigative surveys between Malta and Sicily and to the South of Malta

The Ports and Yachting Directorate, Transport Malta, notifies mariners that several types of investigative surveys will be carried out between Malta and Sicily and to the South of Malta.

These investigative surveys will be carried out by the vessel “*RV Gaia Blu*” and her ancillary equipment.

Weather permitting the surveys are planned to commence on Thursday 28th August 2025 and are expected to be completed by Monday 8th September 2025.

The investigative surveys will be held within the area formed by joining the points A, B, C, D, E, F, G, H, I, J, K and the intermediate coastline, as shown on the attached chart.

Point	Latitude (N)	Longitude (E)
A (Sicily)	36° 58'.457	014° 22'.100
B	36° 54'.302	014° 16'.647
C	35° 41'.768	013° 59'.957
D	35° 19'.781	014° 44'.462
E	35° 14'.644	015° 04'.397
F	35° 34'.165	015° 17'.146
G	36° 01'.699	015° 29'.663
H	36° 15'.878	015° 33'.140
I	36° 32'.316	015° 34'.763
J	36° 49'.782	015° 15'.755
K (Sicily)	36° 51'.721	015° 07'.726

Since the vessel will be towing different types of equipment and, may at times be stationery, she will be restricted in her ability to manoeuvre.



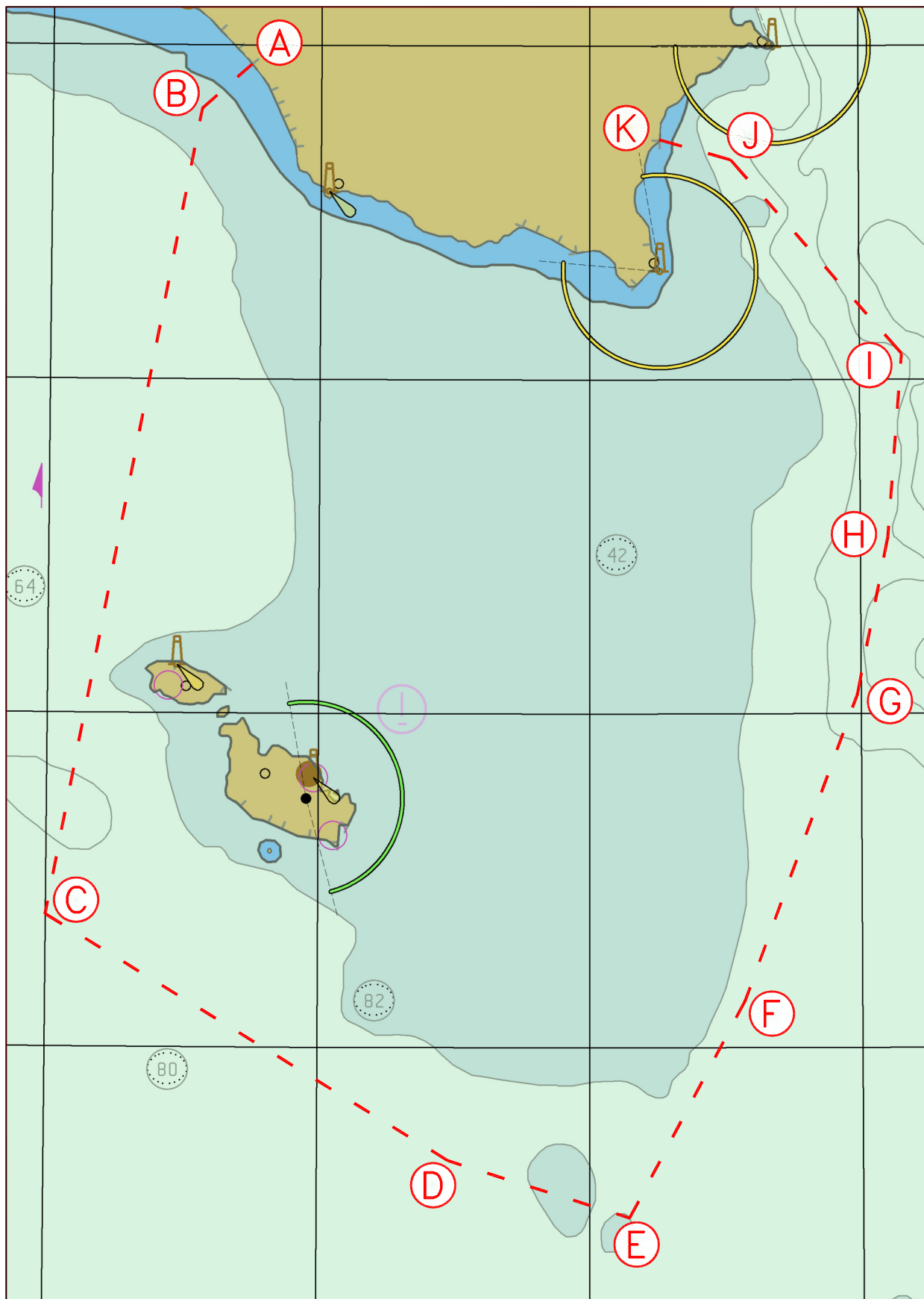
Transport Malta

Appropriate signals in accordance with the Regulations for the Prevention of Collisions at sea (COLREGS) and the International Code of Signals, will be exhibited accordingly.

Mariners are instructed to navigate with caution and to maintain a safe distance of 0.75 Nautical Miles from the vessel *“RV Gaia Blu”* when it is detected or sighted.

All vessels are to comply with any instructions given on Channel VHF 16.

Charts Affected: **BA 2123, 2124, 2537, 2538**



© Transport Malta all rights reserved

DISCLAIMER

Whilst the Ports and Yachting Directorate, Transport Malta has endeavoured to ensure that the material supplied is suitable for the purpose described, it accepts no liability (to the maximum extent permitted by law) for any damage or loss of any nature arising from its use.

The material supplied is used entirely at the Recipient's own risk.