



**PORTS AND YACHTING DIRECTORATE**

**Transport Malta**

## **LOCAL NOTICE TO MARINERS NO 19 OF 2012**

Our Ref: TM/PYD/63/00

12 April 2012

Malta Transport Centre  
Marsa, MRS 1917  
Malta

Tel: (356) 2122 2203  
Fax: (356) 2125 0365  
Email: [info.tm@transport.gov.mt](mailto:info.tm@transport.gov.mt)

[www.transport.gov.mt](http://www.transport.gov.mt)

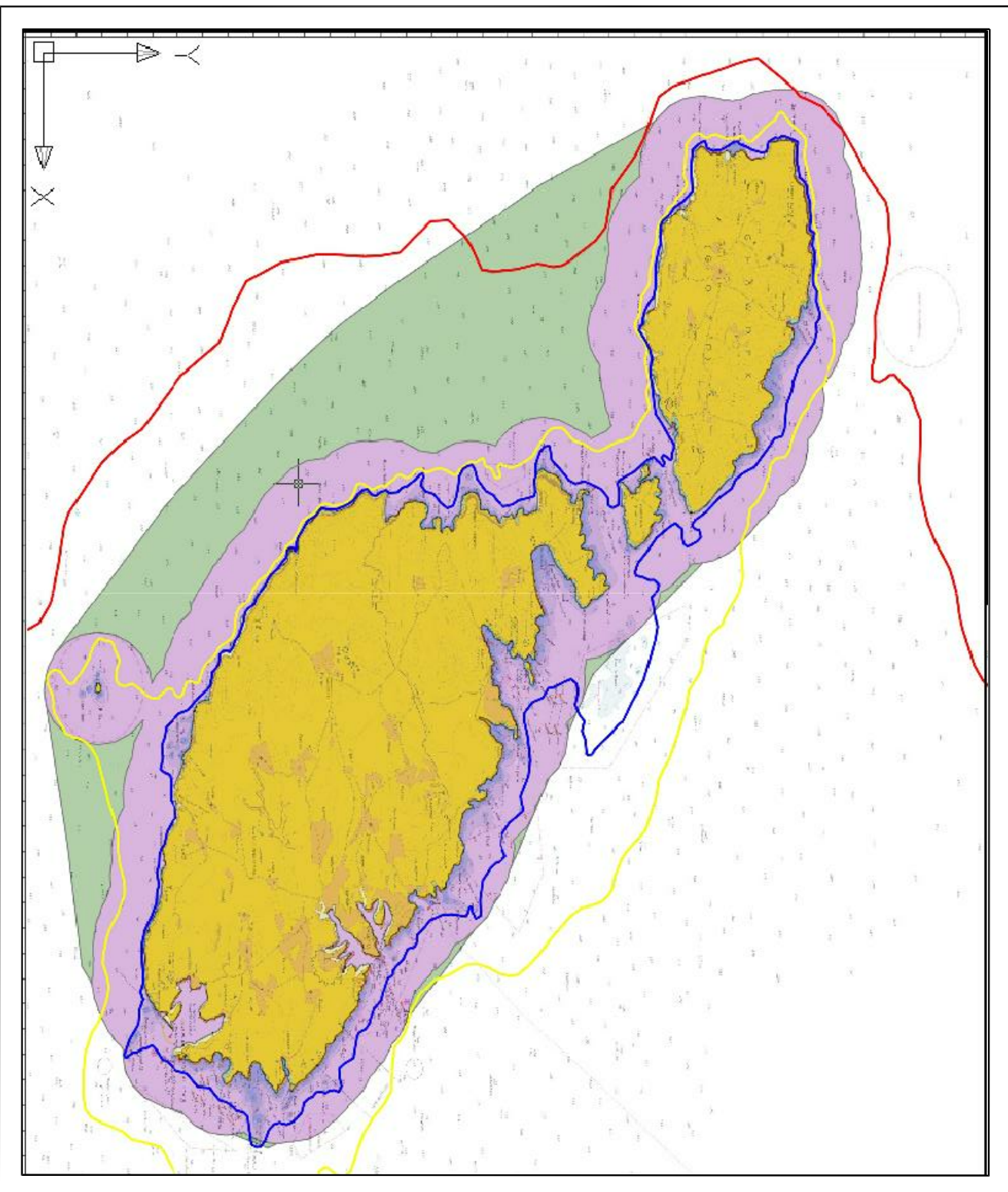
### **Marine Surveys Around Malta**

The Ports and Yachting Directorate, Transport Malta notifies Mariners that a marine survey will be carried around the coast of Malta within the sea area indicated in the attached chart and coloured in magenta and green. The surveys will start on approximately 18 April 2012 and for a duration of four (4) months (weather permitting).

The vessel ISIS will conduct the survey and will be restricted in manoeuvrability.

Mariners are to note the above and give a wide berth of at least 150 m when vessel is sighted. Any instructions issued by Valletta VTS (Valletta Port Control) are to be adhered to.

Positions referred to WGS 84 DATUM



©British Crown Copyright 1970, 1983, 1986, 1988, 1999, 2000.  
All rights reserved

The UK Hydrographic Office makes the accompanying data  
available to Transport Malta under the terms and  
conditions of agreement HD 14E7/00030/01.

#### DISCLAIMER

Whilst the UK Hydrographic Office has endeavoured to ensure  
that the material supplied is suitable for the purposes for which  
it was supplied, it does not accept any liability for any damage or loss  
for any damage or loss of any nature arising from its use.  
The material supplied is used entirely at the Recipient's own risk.