



PORTS AND YACHTING DIRECTORATE

Transport Malta

## LOCAL NOTICE TO MARINERS NO 18 OF 2012

Our Ref: TM/PYD/63/00

12 April 2012

Malta Transport Centre  
Marsa, MRS 1917  
Malta

Tel: (356) 2122 2203  
Fax: (356) 2125 0365  
Email: [info.tm@transport.gov.mt](mailto:info.tm@transport.gov.mt)

[www.transport.gov.mt](http://www.transport.gov.mt)

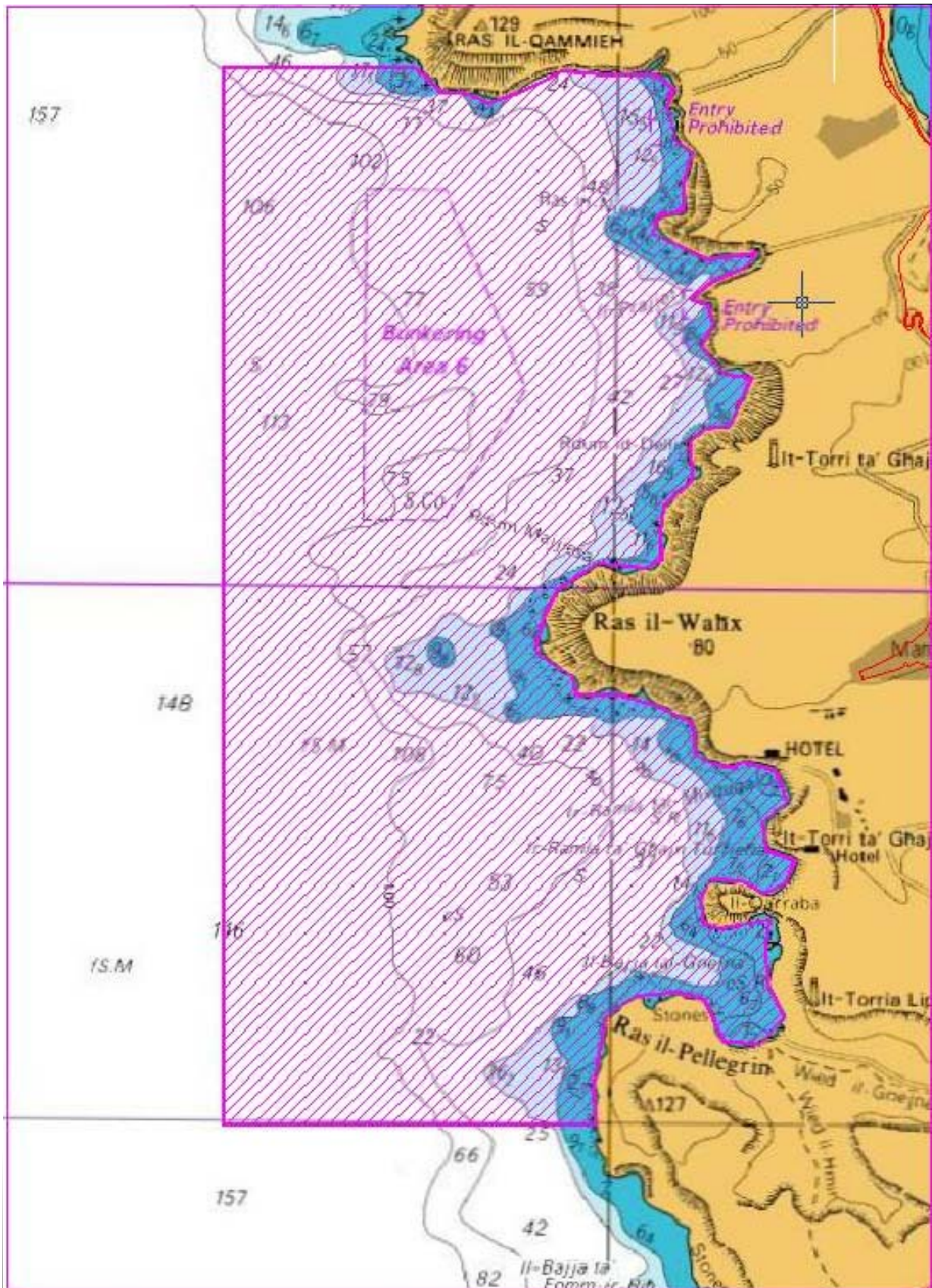
### Marine Surveys North West of Malta

The Ports and Yachting Directorate, Transport Malta notifies Mariners that marine surveys will be carried in the North West of Malta between Ras il-Pellegrin and Ras il-Qammieh, as shown on attached chart. The surveys will start on after the 18 April 2012 and are estimated to last for about four weeks (weather permitting).

The vessel ISIS that will carry out the survey will be towing a cable of 300m.

Mariners are to note the above and give a wide berth of 350 m when this vessel is sighted on the above dates. Any instructions issued by Valletta VTS (Valletta Port Control) are to be adhered to.

Positions referred to WGS 84 DATUM



British Crown Copyright 1970, 1983, 1986, 1988, 1999, 2000.

The UK Hydrographic Office makes the accompanying data available to Transport Malta under the terms and conditions of agreement HD 1427/020930/01.

Whilst the UK Hydrographic Office has endeavoured to ensure that the material supplied is suitable for the purpose described, it accepts no liability (to the maximum extent permitted by law) for any damage or loss of any nature arising from its use. The material supplied is used entirely at the Recipient's own risk.