



**Transport Malta**

Malta Transport Centre  
Marsa, MRS 1917  
Malta

Tel: (356) 2122 2203  
Fax: (356) 2125 0365  
Email: [info.tm@transport.gov.mt](mailto:info.tm@transport.gov.mt)

[www.transport.gov.mt](http://www.transport.gov.mt)

PORTS AND YACHTING DIRECTORATE

## LOCAL NOTICE TO MARINERS NO 16 of 2012

Our Ref: **TM/PYD/22/01/ Vol IV**

Date: **10 April 2012**

### **Fireworks Festival in Grand Harbour**

The Ports and Yachting Directorate, Transport Malta, notifies mariners that the 10<sup>th</sup> Fireworks Festival will be held in Grand Harbour between Friday, 27 April 2012 and Tuesday, 1 May 2012.

Fireworks will be let off from barges placed over 200 meters off Bigli Point and St Angelo. The Barges will be placed in position, on Friday, early morning, 27 April 2012 until Wednesday, morning, 2 May 2012. A copy of part BA Chart 177 showing arrangement of barges is attached.

Schedule of the fireworks is as follows:

Friday 27 April 2012	from 2200 hrs till 2300 hrs
Sunday 29 April 2012	from 2100 hrs till 2300 hrs
Monday 30 April 2012	from 2100 hrs till 2300 hrs
Tuesday 1 May 2012	from 2130 hrs till 2215 hrs

In view of the above, mariners are informed that part of Grand Harbour (as shown on chart) will be closed to all vessels and craft as follows:

Friday 27 April 2012	from 2100 hrs till 2330 hrs local Time (1900 hours and 2130 hours UTC)
Sunday 29 April 2012	from 2000 hrs till 2330 hrs local Time (1800 hours and 2130 hours UTC)
Monday 30 April 2012	from 2000 hrs till 2330 hrs local Time (1800 hours and 2130 hours UTC)
Tuesday 1 May 2012	from 2030 hrs till 2245 hrs local Time (1830 hours and 2045 hours UTC)

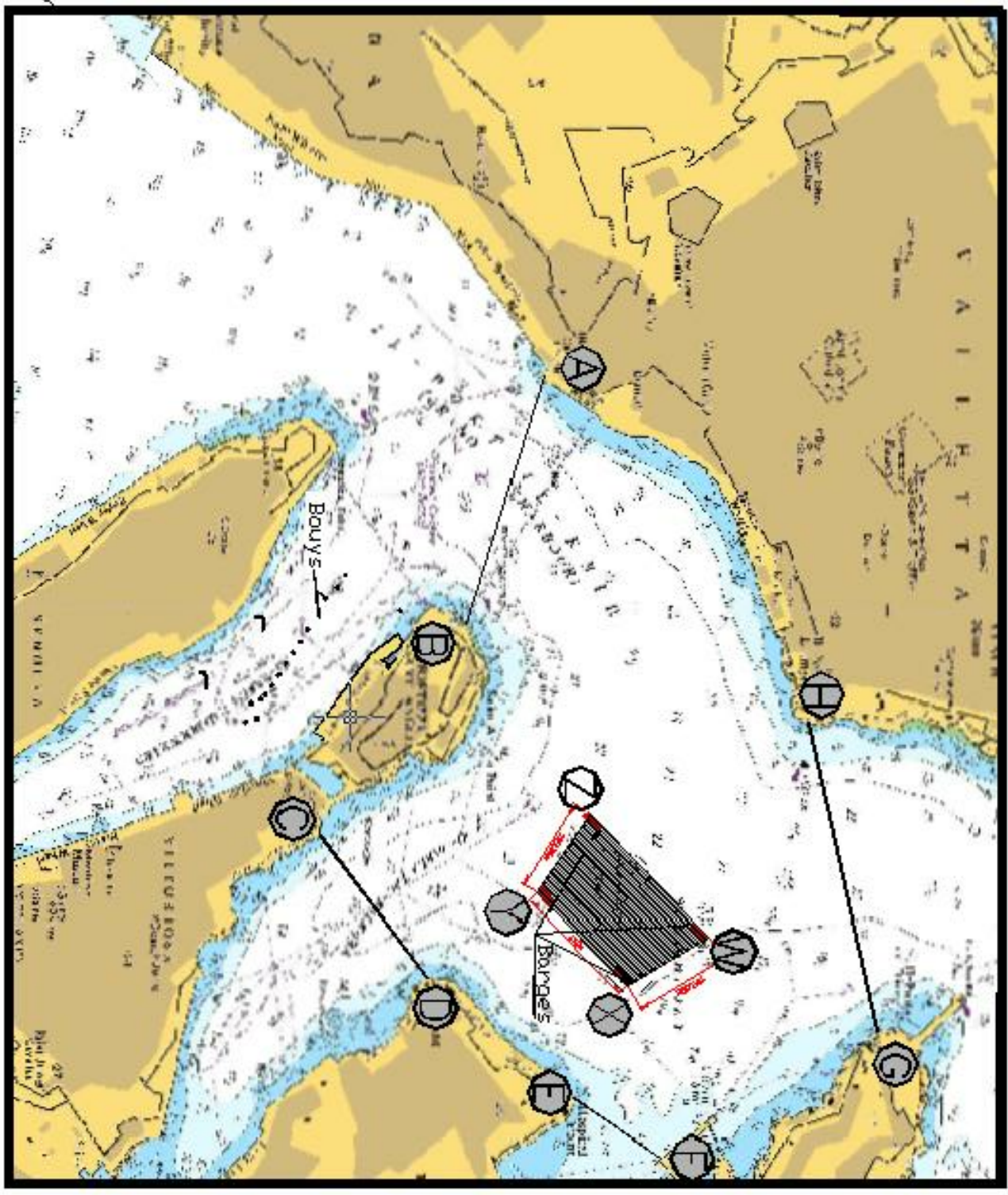
An imaginary line binds the restricted area between the points A - B, C - D, E - F and G - H as shown on the attached chart. The barges are to be given a wide berth at all times.

No boats will be allowed within the restricted area, except by special permission from the Ports and Yachting Directorate and by arrangement through the Organising Committee. Between the above mentioned times, only authorised passenger craft may be allowed to enter the restricted area. Authorised craft are to give the display barges a wide berth of at least 200m at all times. No movements whatsoever will be allowed during the actual displays.

Mariners are to comply with instructions and directions issued by Valletta VTS (Valletta Port Control) on VHF Channel 12, Police and patrol boats in the area.

Chart Affected: BA 177


  
 Port & Yachting Directorate
   
 Transport Malta
   
 Maltese Transport Centre
   
 XALLI-GNANJON IJ-L-GRANĊI
   
 MARSA MRS 1917
   
 Tel: 21222203
   
 Fax: 21222208
   
 Email: info@transport.gov.mt
   
 www.transport.gov.mt



Fireworks Area

W	35° 53' 754	014° 31' 314
X	35° 53' 693	014° 31' 357
Y	35° 53' 632	014° 31' 281
Z	35° 53' 669	014° 31' 207

©British Crown Copyright 1970, 1988, 1996, 1998, 1999, 2000, 2011.  
 All rights reserved.  
 The UK Hydrographic Office makes the accompanying data available to Transport Malta under the terms and conditions of agreement no MTS/2000/01.

**DISCLAIMER**

Whilst the UK Hydrographic Office has endeavoured to ensure that the material supplied is suitable for the purpose described, it accepts no liability for the results obtained by users. The material is supplied as is and is not to be used for any purpose other than that for which it was supplied. The material supplied is used entirely at the recipient's own risk.