



PORTS AND YACHTING DIRECTORATE

LOCAL NOTICE TO MARINERS N° 070 of 2025

Our Ref: **TM/PYD/132/89**

23 May 2025



Transport Malta

Malta Transport Centre,
Triq Pantar, Hal Lija, LJA 2021
Malta

Tel: (356) 2122 2203
Fax: (356) 2125 0365
Email: info.tm@transport.gov.mt

www.transport.gov.mt

Filming at different localities – “Bells”

The Ports and Yachting Directorate, Transport Malta notifies all mariners, owners of vessels and divers, that filming activities will take place at different localities.

Filming will take place on between Wednesday 28th May 2025 and Monday 16th June 2025, at the locations and times as follow:

Wied ta' Migra Ferha

Filming in this locality is scheduled to be carried out on Wednesday 28th, Thursday 29th and Saturday 31st May 2025 from 0600 hours to 2000 hours, within the area as shown in red on attached chart A.

Ras il-Qammieh

Filming in this locality is scheduled to be carried out on Friday 30th May 2025 from 0600 hours to 2000 hours, within the area as shown in red on attached chart B.

Fungus Rock (Il-Gebli tal-General) - Gozo

Filming in this locality is scheduled to be carried out on Monday 2nd June 2025 from 0600 hours to 2000 hours, within the area as shown in red on attached chart C.

Ras l-Irqlieqa - Comino

Filming in this locality is scheduled to be carried out on Monday 2nd June 2025 from 0600 hours to 2000 hours, within the area as shown in red on attached chart D.

Ras il-Wahx

Filming in this locality is scheduled to be carried out on Thursday 5th June 2025 from 0600 hours to 2000 hours, within the area as shown in red on attached chart E.



Off Malta Film Studios - Rinella

Filming in this locality is scheduled to be carried out on Wednesday 11th and Wednesday 18th June 2025 from 0600 hours to 2000 hours, within the area as shown in red on attached chart F.

During these days and times, for filming purposes, vessels transiting the areas indicated in red on the attached charts, shall, except in the case of emergency, not drop anchor and no loitering is allowed, they are to remain underway.

All mariners, owners of vessels and divers are advised that entry into the areas (as shown on the attached charts) is to be avoided on the above-mentioned dates and time.

Mariners are advised to navigate with caution at slow speed and give a wide berth when in the vicinity, they are to keep out of the above-mentioned area and to comply with instructions and directions issued on VHF channel 12 and/or 16 by Valletta VTS and by any Enforcement Officers on site.

BA Chart: 177, 211, 2537



© British Crown Copyright 1970, 1983, 1986, 1988, 1999, 2000
All rights reserved.

The UK Hydrographic Office makes the accompanying data
Available to Malta Maritime Authority (Transport Malta)
Under the terms and conditions of agreement HO 1427/020930/01.

DISCLAIMER

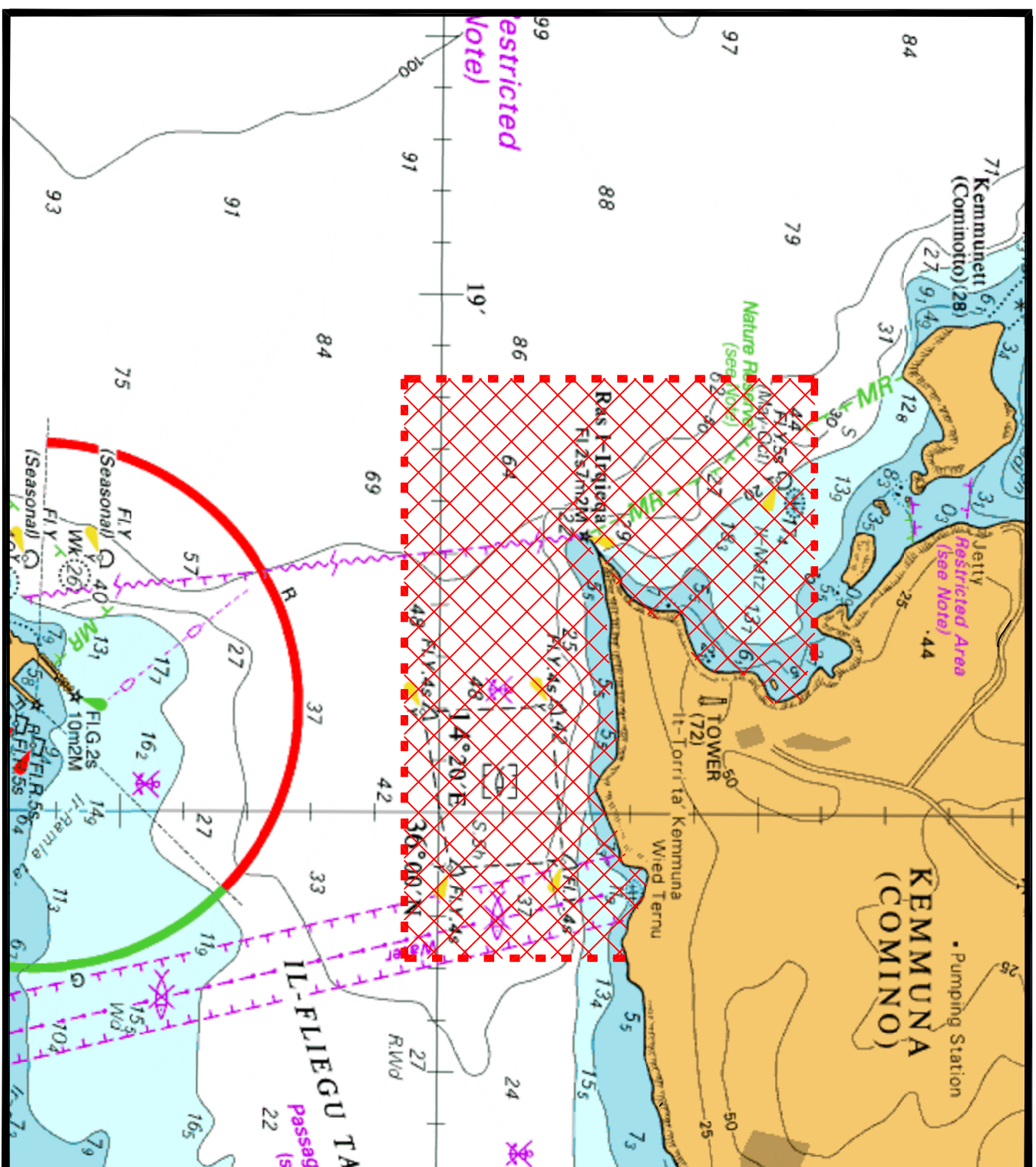
Whilst the UK Hydrographic Office has endeavoured to ensure
That the material supplied is suitable for the purpose described,
It accepts no liability (to the maximum extent permitted by law)
For any damage or loss of any nature arising from its use.
The material supplied is used entirely at the Recipient's own risk.

Chart A

The UK Hydrographic Office makes the accompanying data Available to Malta Maritime Authority (Transport Malta)
Under the terms and conditions of agreement HO 1427/020930/01.

Whilst the UK Hydrographic Office has endeavoured to ensure that the material supplied is suitable for the purpose described, It accepts no liability (to the maximum extent permitted by law) for any damage or loss of any nature arising from its use. The material supplied is used entirely at the Recipient's own risk.





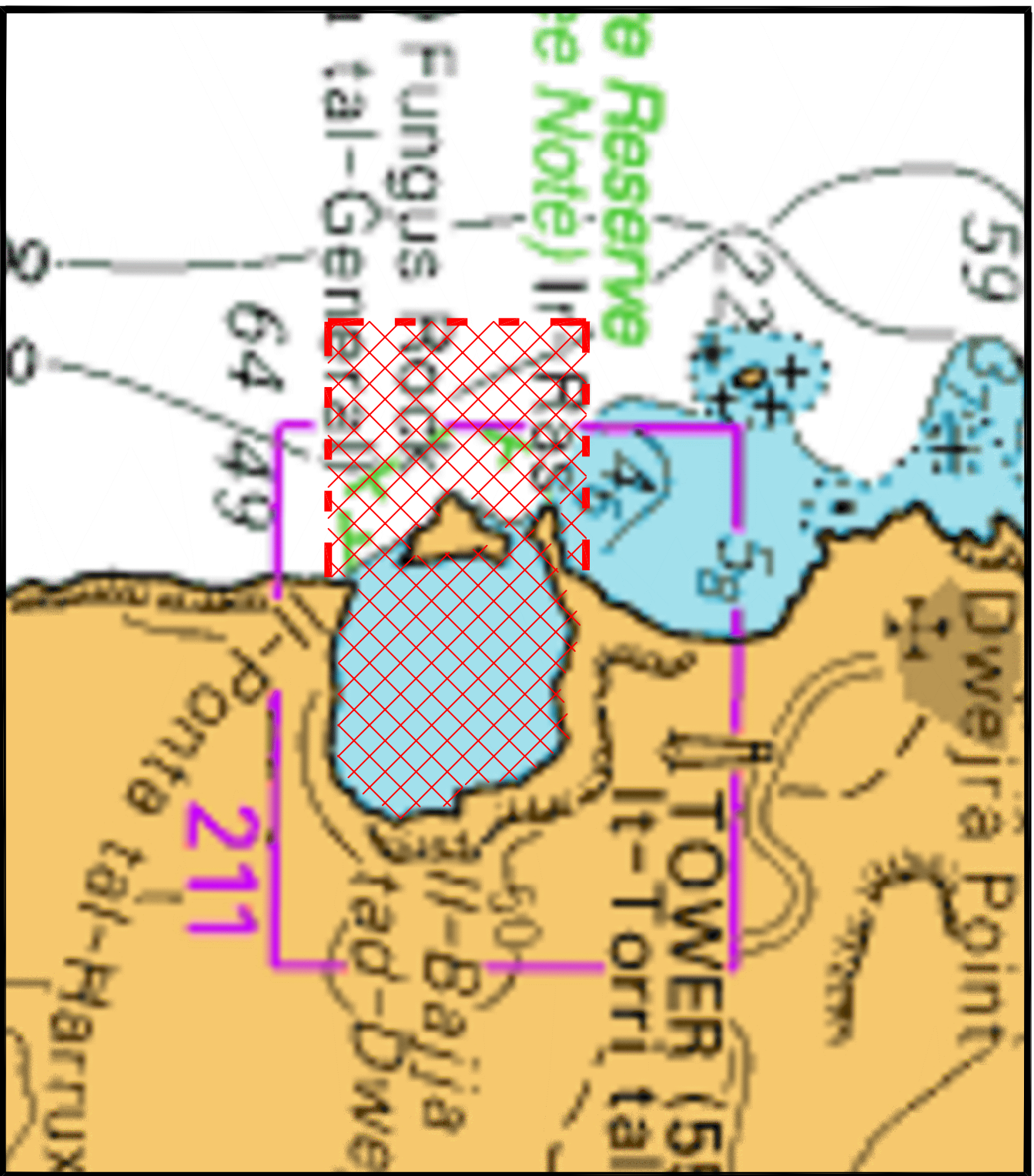
© British Crown Copyright 1970, 1983, 1986, 1988, 1999, 2000
All rights reserved.

The UK Hydrographic Office makes the accompanying data
Available to Malta Maritime Authority (Transport Malta)
Under the terms and conditions of agreement HO 1427/020930/01.

DISCLAIMER

Whilst the UK Hydrographic Office has endeavoured to ensure
That the material supplied is suitable for the purpose described,
it accepts no liability (to the maximum extent permitted by law)
For any damage or loss of any nature arising from its use.
The material supplied is used entirely at the Recipient's own risk.

Chart C



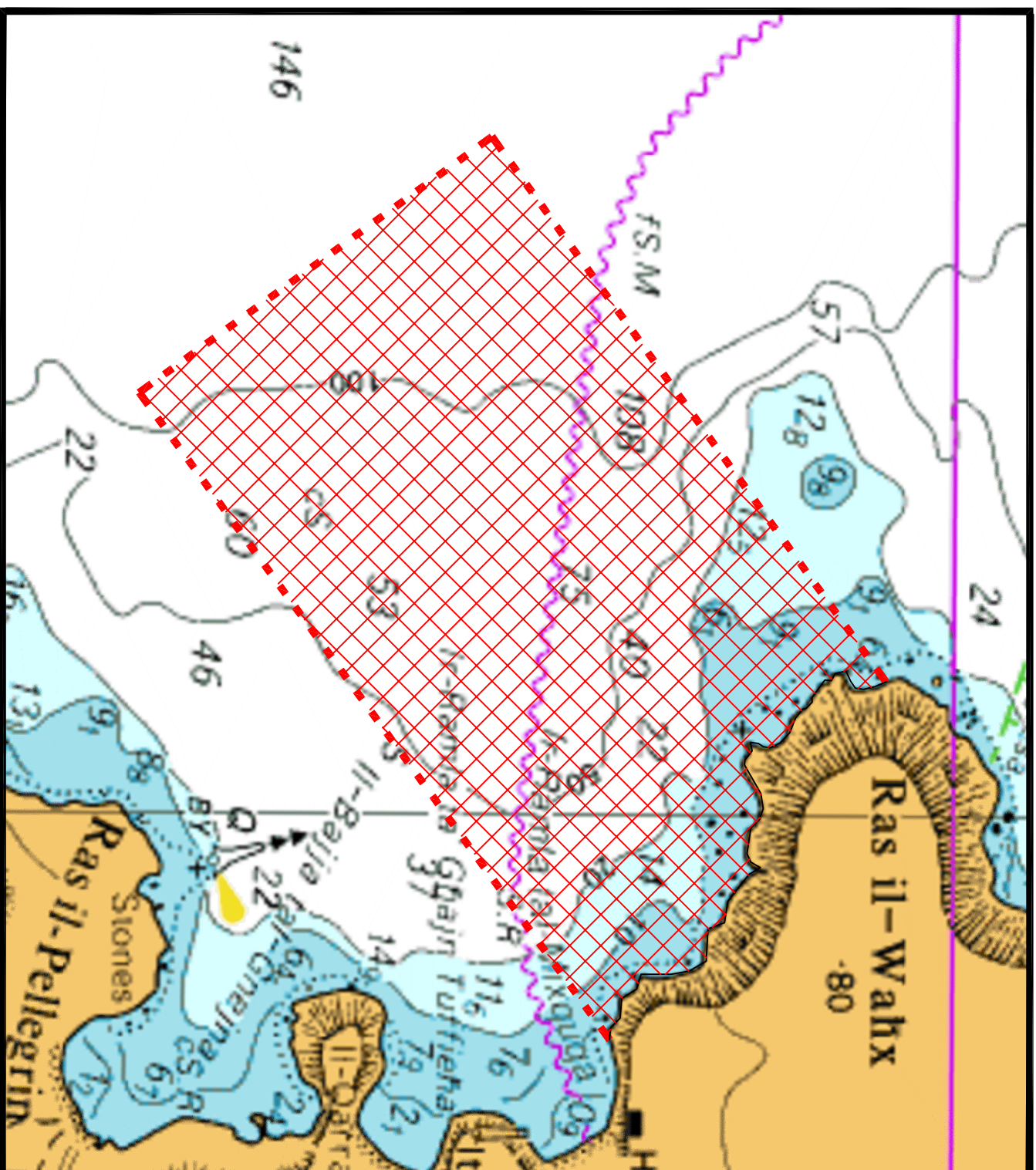
© British Crown Copyright 1970, 1983, 1986, 1988, 1999, 2000
All rights reserved.

The UK Hydrographic Office makes the accompanying data
Available to Malta Maritime Authority (Transport Malta)
Under the terms and conditions of agreement HO 1427/020930/01.

DISCLAIMER

Whilst the UK Hydrographic Office has endeavoured to ensure
That the material supplied is suitable for the purpose described,
it accepts no liability (to the maximum extent permitted by law)
For any damage or loss of any nature arising from its use.
The material supplied is used entirely at the Recipient's own risk.

Chart D



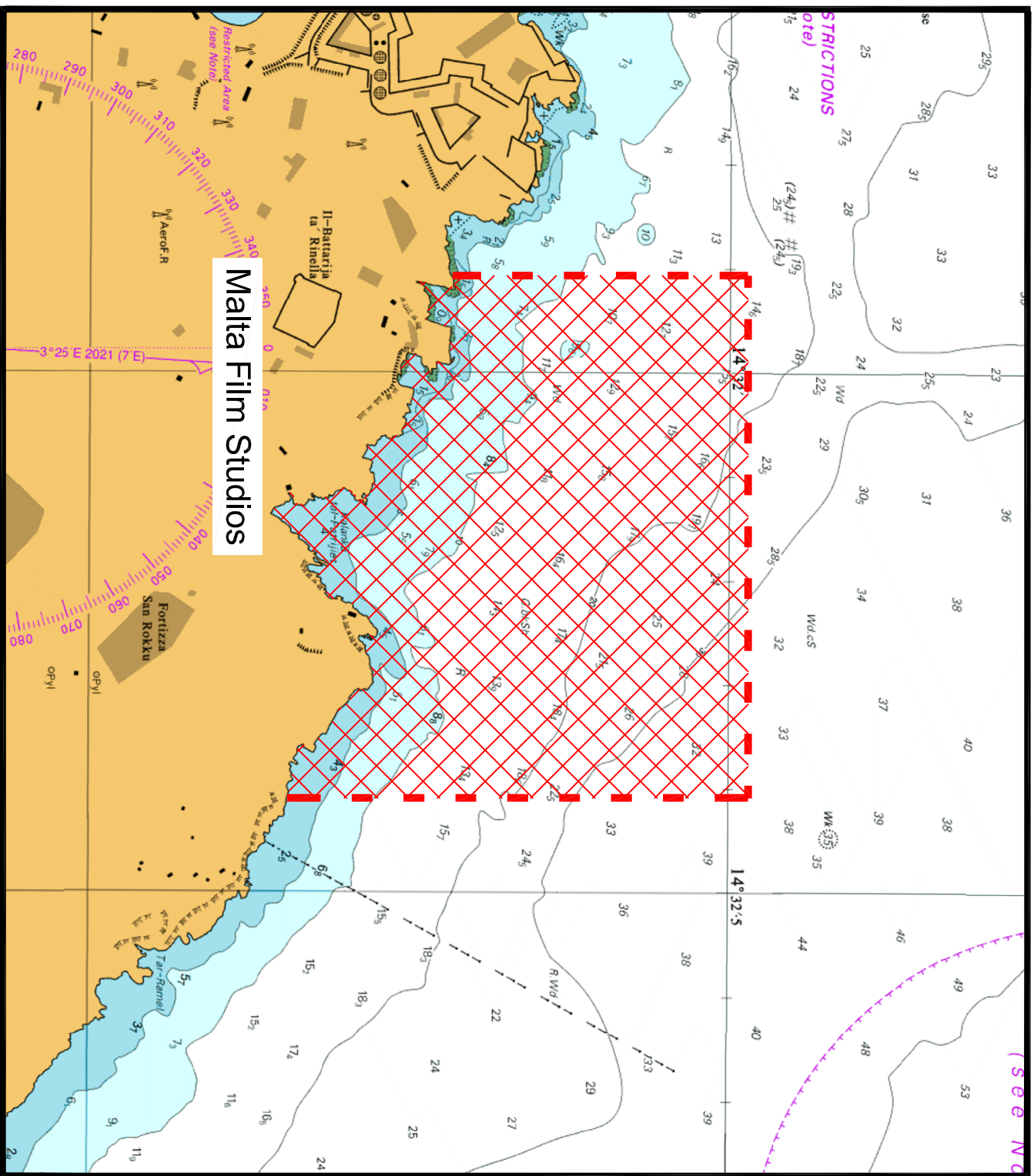
© British Crown Copyright 1970, 1983, 1986, 1988, 1999, 2000
All rights reserved.

The UK Hydrographic Office makes the accompanying data
Available to Malta Maritime Authority (Transport Malta)
Under the terms and conditions of agreement HO 1427/020930/01.

DISCLAIMER

Whilst the UK Hydrographic Office has endeavoured to ensure
That the material supplied is suitable for the purpose described,
It accepts no liability (to the maximum extent permitted by law)
For any damage or loss of any nature arising from its use.
The material supplied is used entirely at the Recipient's own risk.

Chart E



© British Crown Copyright 1970, 1983, 1986, 1988, 1999, 2000
All rights reserved.

The UK Hydrographic Office makes the accompanying data
Available to Malta Maritime Authority (Transport Malta)
Under the terms and conditions of agreement HO 1427/020930/01.

DISCLAIMER

Whilst the UK Hydrographic Office has endeavoured to ensure
That the material supplied is suitable for the purpose described,
it accepts no liability (to the maximum extent permitted by law)
For any damage or loss of any nature arising from its use.
The material supplied is used entirely at the Recipient's own risk.

Chart F