



PORTS AND YACHTING DIRECTORATE

## LOCAL NOTICE TO MARINERS N° 062 of 2025

Our Ref: **TM/PYD/132/89**

16 May 2025



**Transport Malta**

Malta Transport Centre,  
Triq Pantar, Hal Lija, LJA 2021  
Malta

Tel: (356) 2122 2203  
Fax: (356) 2125 0365  
Email: [info.tm@transport.gov.mt](mailto:info.tm@transport.gov.mt)

[www.transport.gov.mt](http://www.transport.gov.mt)

### **Filming at Mgarr ix-Xini and Imġiebah - Two weeks in August**

The Ports and Yachting Directorate, Transport Malta notifies all mariners, owners of vessels and divers, that filming activities will take place in Mgarr ix- Xini – Gozo and in Imġiebaħ Bay – Malta.

Filming will take place between Wednesday 21<sup>st</sup> May 2025 and Monday 2<sup>nd</sup> June 2025, at the locations and times as follow:

Filming at Mgarr ix-Xini – Gozo will be carried out within the area shown in red on attached chart A.

From Wednesday 21<sup>st</sup> May to Friday 23<sup>rd</sup> May 2025, between 0700 hours and 1900 hours.  
From Monday 26<sup>th</sup> May to Wednesday 28<sup>th</sup> May 2025, between 0700 hours and 1900 hours.

With Saturday 24<sup>th</sup> May and Sunday 25<sup>th</sup> May 2025 between 0700 hours and 1900 hours being alternative dates.

Filming at Imġiebaħ Bay will be carried out within the area shown in red on the attached chart B.

From Thursday 29<sup>th</sup> May to Saturday 31<sup>st</sup> May 2025, between 0700 hours and 1900 hours.

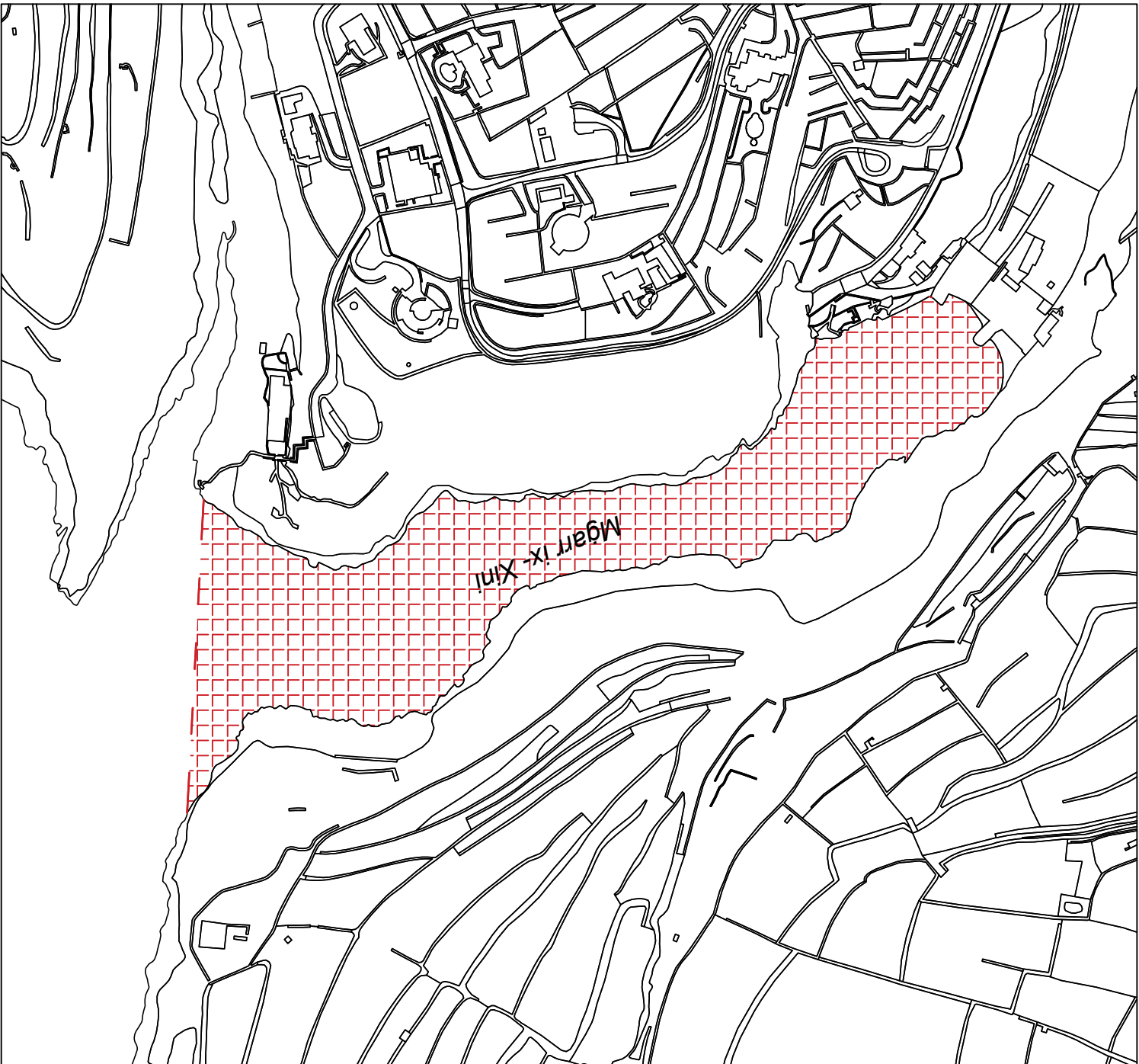
On Monday 2<sup>nd</sup> June 2025 between 0700 hours and 1900 hours.

With Sunday 1<sup>st</sup> June 2025 between 0700 hours and 1900 hours being alternative date.

All mariners, owners of vessels and divers are advised that entry into the areas (as shown in red on the attached charts A and B) is prohibited and the areas are to be kept clear on the above-mentioned dates and time.

Mariners are advised to navigate with caution at slow speed and give a wide berth when in the vicinity, they are to keep out of the above-mentioned area and to comply with instructions and directions issued on VHF channel 12 and/or 16 by Valletta VTS and by any Enforcement Personnel on site.

**BA Chart: 211, 2537**



© Transport Malta all rights reserved  
DISCLAIMER

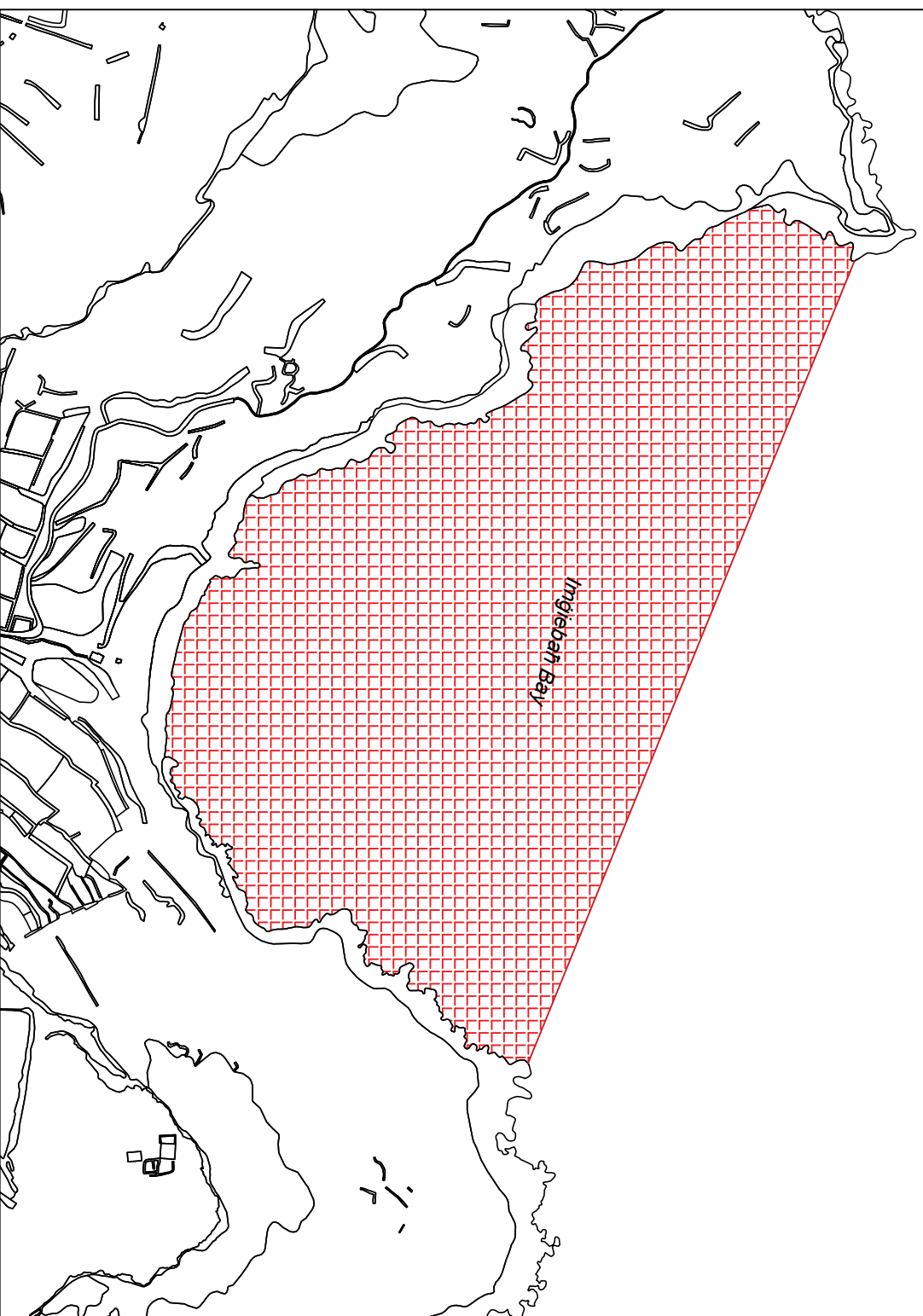
Whilst the Ports and Yachting Directorate, Transport Malta has endeavoured to ensure that the material supplied is suitable for the purpose described, it accepts no liability (to the maximum extent permitted by law) for any damage or loss of any nature arising from its use.

The material supplied is used entirely at the Recipient's own risk.

**DISCLAIMER**

Whilst the Ports and Yachting Directorate, Transport Malta has endeavoured to ensure that the material supplied is suitable for the purpose described, it accepts no liability to the maximum extent permitted by law) for any damage or loss of any nature arising from its use.

The material supplied is used entirely at the Recipient's own risk.



**Chart B**