



PORTS AND YACHTING DIRECTORATE

NOTICE TO MARINERS N° 18 of 2025

Our Ref: **TM/PYD/40/82 Vol IV**

30 April 2025



Transport Malta

Malta Transport Centre,
Triq Pantar, Hal Lija, LJA 2021
Malta

Tel: (356) 2122 2203
Fax: (356) 2125 0365
Email: info.tm@transport.gov.mt

www.transport.gov.mt

Live firing practice exercise at Sea – Gunex 01/2025

The Ports and Yachting Directorate, Transport Malta notifies that the Armed Forces of Malta shall conduct a live firing practice exercise at sea from either Pembroke Ranges (LM-D01) or south of Malta (LM-D05) between Monday 12th May 2025 and Friday 16th May 2025.

The area to be used on the day, will be determined by the prevalent weather conditions.

The exercise will take place within either of the areas as mentioned below, between 0800 hours and 2000 hours local time, (0600 hours to 1800 hours UTC).

At Pembroke ranges LM-D01 (PEMBROKE HIGH)

From Position A:	LATITUDE (N)	LONGITUDE (E)
	35° 55'.900	014° 28'.533

thence on a bearing of 335 True x 8.5 nautical miles to:

Position B:	LATITUDE (N)	LONGITUDE (E)
	36° 03'.620	014° 24'.100

thence on an arc of a circle radius 8.5 nautical miles centred on position A to:

Position C:	LATITUDE (N)	LONGITUDE (E)
	36° 00'.150	014° 37'.600

thence on a bearing of 240 True to position A.



Transport Malta

All vessels in the vicinity must proceed with caution and keep at least eight and a half nautical miles (8.5NM) off the Pembroke Coast, on the dates and times indicated.

Mariners are also informed that a corridor of four nautical miles (4NM) between the coast and the line M to N (as shown on the attached chart A) has been established for the passage of all vessels on the above-mentioned dates and times. Any vessel intending to transit through this corridor within these times is to communicate on VHF channel 69 Malta VTS, for final approval prior to entering the area.

	LATITUDE (N)	LONGITUDE (E)
M	36° 02'.869	014° 24'.532
N	35° 58'.387	014° 33'.834

At south of Malta LM-D5 (MELITA)

The exercise will be held within a circular area of 8 Nautical Mile Radius, centred on point Z:

Position Z:	LATITUDE (N)	LONGITUDE (E)
	35° 30'.500	014° 11'.000

as shown on the attached chart B.

In view of the above all vessels in the vicinity must proceed with caution, they are advised to give the exercise areas a wide berth and comply at all times with any instructions given by AFM craft patrolling the area and by Valletta VTS on VHF channel 12.

Chart affected: **BA 194, 2124, 2537 and 2538**

Positions referred to **WGS 84 DATUM**

© British Crown Copyright 1970, 1983, 1986, 1988, 1999, 2000
All rights reserved.

The UK Hydrographic Office makes the accompanying data
Available to Malta Maritime Authority (Transport Malta)
Under the terms and conditions of agreement HO 1427/020930/01.

DISCLAIMER

Whilst the UK Hydrographic Office has endeavoured to ensure
That the material supplied is suitable for the purpose described,
It accepts no liability (to the maximum extent permitted by law)
For any damage or loss of any nature arising from its use.
The material supplied is used entirely at the Recipient's own risk.

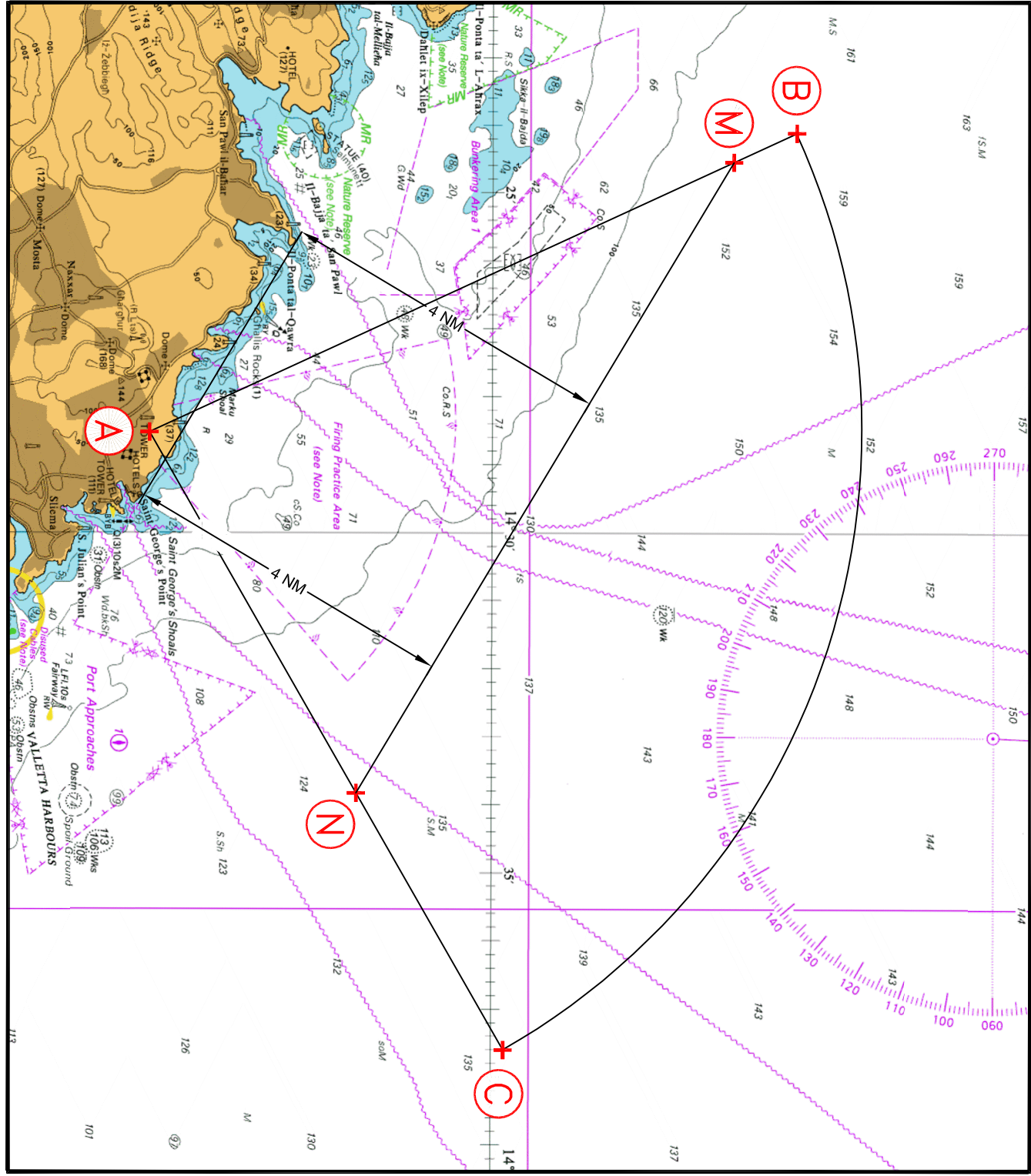


Chart A

The UK Hydrographic Office makes the accompanying data Available to Malta Maritime Authority (Transport Malta)
Under the terms and conditions of agreement HO 1427/020930/01

Whilst the UK Hydrographic Office has endeavoured to ensure that the material supplied is suitable for the purpose described, it accepts no liability (to the maximum extent permitted by law) for any damage or loss of any nature arising from its use. The material supplied is used entirely at the Recipient's own risk.

