



PORTS AND YACHTING DIRECTORATE

NOTICE TO MARINERS No 74 of 2019

Our Ref: **TM/PYD/70/02**

31 December 2019



Transport Malta

Malta Transport Centre
Marsa, MRS 1917
Malta

Tel: (356) 2122 2203
Fax: (356) 2125 0365
Email: info.tm@transport.gov.mt

www.transport.gov.mt

ROV Survey of the Malta-Scicly interconnector submarine cable

The Ports and Yachting Directorate, Transport Malta notifies mariners that a survey will be carried out with the use of a Remotely Operated Vehicle (ROV). This survey will be carried out by the vessel M/V Polar King and her ancillary equipment.

Weather permitting the survey is planned to commence on Sunday 5th January 2020 in the line between the following coordinates:

	Latitude (N)	Longitude (E)
North extent	36° 37'.775	14° 32'.542
<i>Southern extent</i>	36° 27' .505	14° 32' .270

This part of the survey is expected to take 2 days.

The ROV survey will then continue along the following route (as per chart Attached):

Turning Point	Latitude (N)	Longitude (E)
1 (Malta – Qalet Marku)	35° 56'.560	014° 26'.960
2	35° 56'.710	014° 27'.020
3	35° 56'.810	014° 27'.000
4	35° 57'.390	014° 27'.220
5	35° 57'.700	014° 27'.260
6	35° 59'.450	014° 29'.360
7	36° 02'.550	014° 30'.630
8	36° 12'.640	014° 33'.280
9	36° 22'.910	014° 33'.900
10	36° 30'.980	014° 30'.820
11	36° 35'.040	014° 30'.800
12	36° 39'.640	014° 34'.400
13 (Sicily – Marina di Ragusa)	36° 46'.650	014° 34'.240



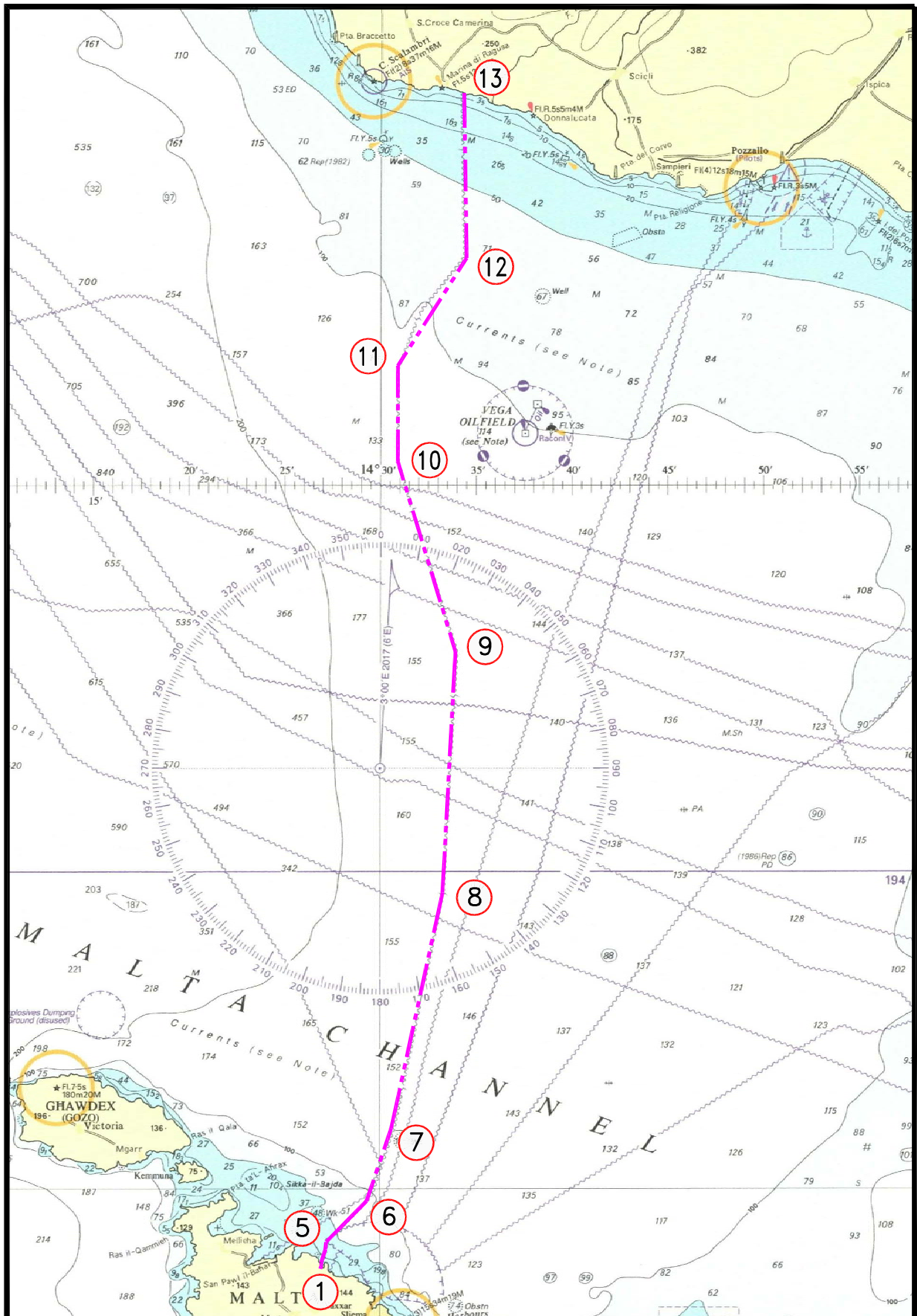
Weather permitting, the survey is expected to be completed by Tuesday 21st January 2020.

Since the vessel will be towing an ROV, she will be restricted in her ability to manoeuvre.

Mariners are instructed to navigate with caution when the above mentioned vessel is sighted and maintain a safe distance of 0.5 Nautical Miles from the vessels.

Mariners are also notified to abide by any instructions issued by Valletta Port Control, (Valletta VTS) on VHF Channel 12.

Charts Affected: **BA 194, 2123, 2124, 2537, 2538 and Int. 4301**



© British Crown Copyright 1970, 1983, 1986, 1988, 1999, 2000
All rights reserved.

The UK Hydrographic Office makes the accompanying data
Available to Malta Maritime Authority (Transport Malta)
Under the terms and conditions of agreement HO 1427/020930/01.

DISCLAIMER

Whilst the UK Hydrographic Office has endeavoured to ensure
That the material supplied is suitable for the purpose described,
It accepts no liability (to the maximum extent permitted by law)
For any damage or loss of any nature arising from its use.
The material supplied is used entirely at the Recipient's own risk.