



PORTS AND YACHTING DIRECTORATE

Transport Malta

## LOCAL NOTICE TO MARINERS No 164 of 2019

Our Ref: **TM/PYD/63/95**

Malta Transport Centre  
Marsa, MRS 1917  
Malta

Tel: (356) 2122 2203  
Fax: (356) 2125 0365  
Email: [info.tm@transport.gov.mt](mailto:info.tm@transport.gov.mt)

05 December 2019

[www.transport.gov.mt](http://www.transport.gov.mt)

### Cable laying between Malta (Il-Ramla tal-Mixquqa) and Gozo (Ras il-Hobz)

The Ports and Yachting Directorate, Transport Malta, notifies mariners that a cable will be laid out between Malta (Ir-Ramla tal-Mixquqa) and Gozo (Ras il-Hobz).

The cable will be laid out by the cable laying vessel Teliri along the route from A to B as shown on the attached chart. This laying will start on Friday 6<sup>th</sup> December 2019 and is expected to be completed by Friday 14<sup>th</sup> December 2019.

Position	Latitude (N)	Longitude (E)	
A	35° 56'.060	014° 20'.626	Malta (Il-Ramla tal-Mixquqa)
B	36° 00'.957	014° 16'.769	Gozo (Ras il-Hobz)

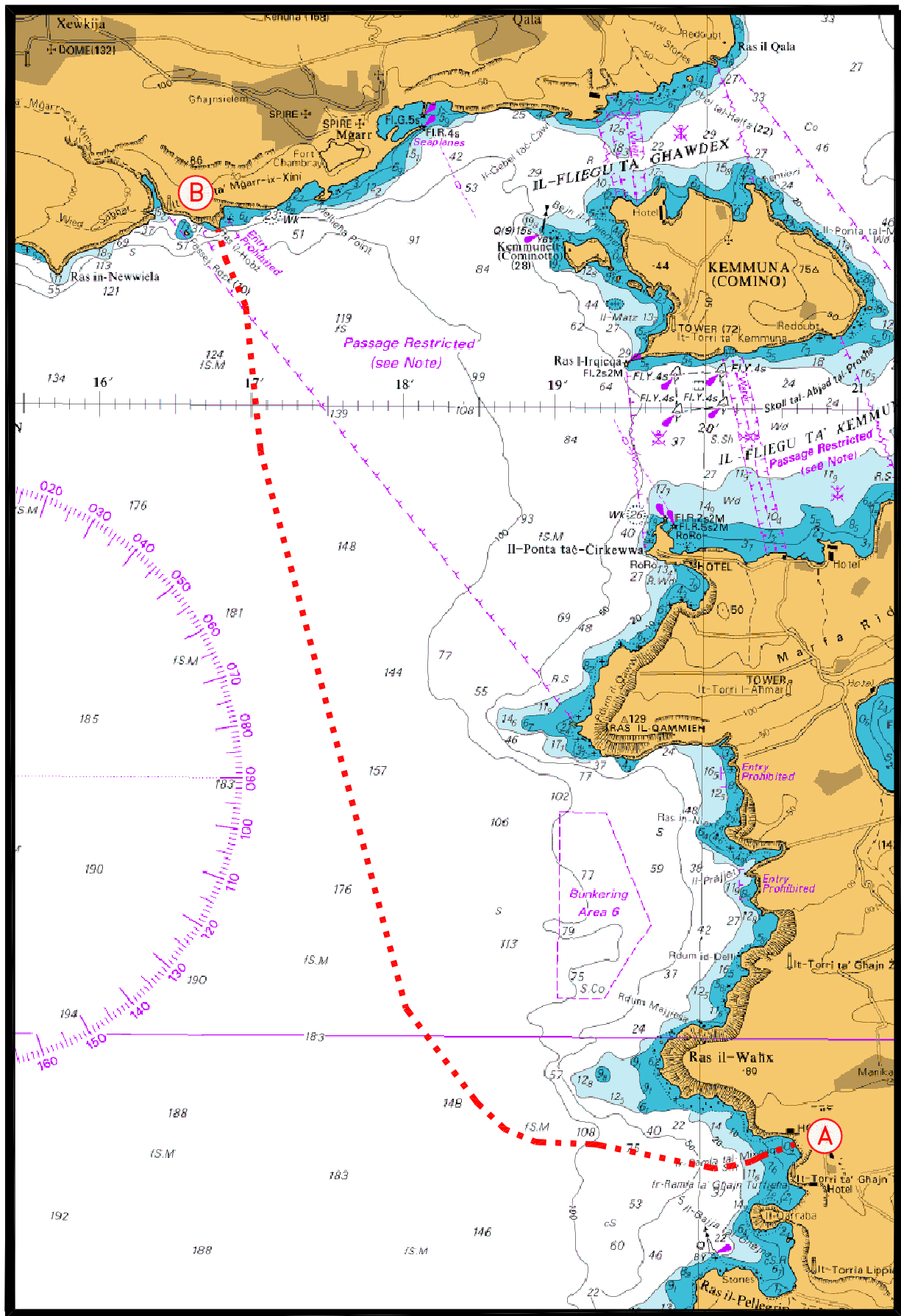
During the cable laying operation divers will be deployed.

Mariners and operators of sea craft are advised to keep a sharp lookout and proceed at slow speed while navigating in the above areas. They are to give the cable laying vessel Teliri a wide berth of at least 1.5 KM as she will be restricted in manoeuvrability.

Moreover, they are requested to comply with instructions given by Valletta Port Control (Valletta VTS) on VHF Channel 12.

Chart affected: **BA 211, 2537, 2538**

Positions referred to WGS 84 DATUM.



© British Crown Copyright 1970, 1983, 1986, 1988, 1999, 2000  
 All rights reserved.

The UK Hydrographic Office makes the accompanying data  
 Available to Malta Maritime Authority (Transport Malta)  
 Under the terms and conditions of agreement HO 1427/020930/01.

**DISCLAIMER**

Whilst the UK Hydrographic Office has endeavoured to ensure  
 That the material supplied is suitable for the purpose described,  
 It accepts no liability (to the maximum extent permitted by law)  
 For any damage or loss of any nature arising from its use.  
 The material supplied is used entirely at the Recipient's own risk.