



PORTS AND YACHTING DIRECTORATE

LOCAL NOTICE TO MARINERS NO 127 of 2018

Our Ref: TM/PYD/63/95 Vol VI

28 November 2018

Malta Transport Centre
Marsa, MRS 1917
Malta

Tel: (356) 2122 2203
Fax: (356) 2125 0365
Email: info.tm@transport.gov.mt

www.transport.gov.mt

Marine Ecological Surveys in Valletta Harbour and in Marsamxett Harbour

The Ports and Yachting Directorate, Transport Malta notifies mariners that, weather permitting, marine ecological surveys will be carried out in Valletta Harbour (Cospicua Dock No1) and in Marsamxett Harbour (Sliema Ferries and Marsamxett Waterpolo Pitch), between **Monday 10th December 2018** and **Friday 21st December 2018** in the areas shown hatched in red on attached charts.

M.V. Atlantis II will be assisting in the survey operations and will display Alpha Flag in according with International Code of Signals, when divers are in the water.

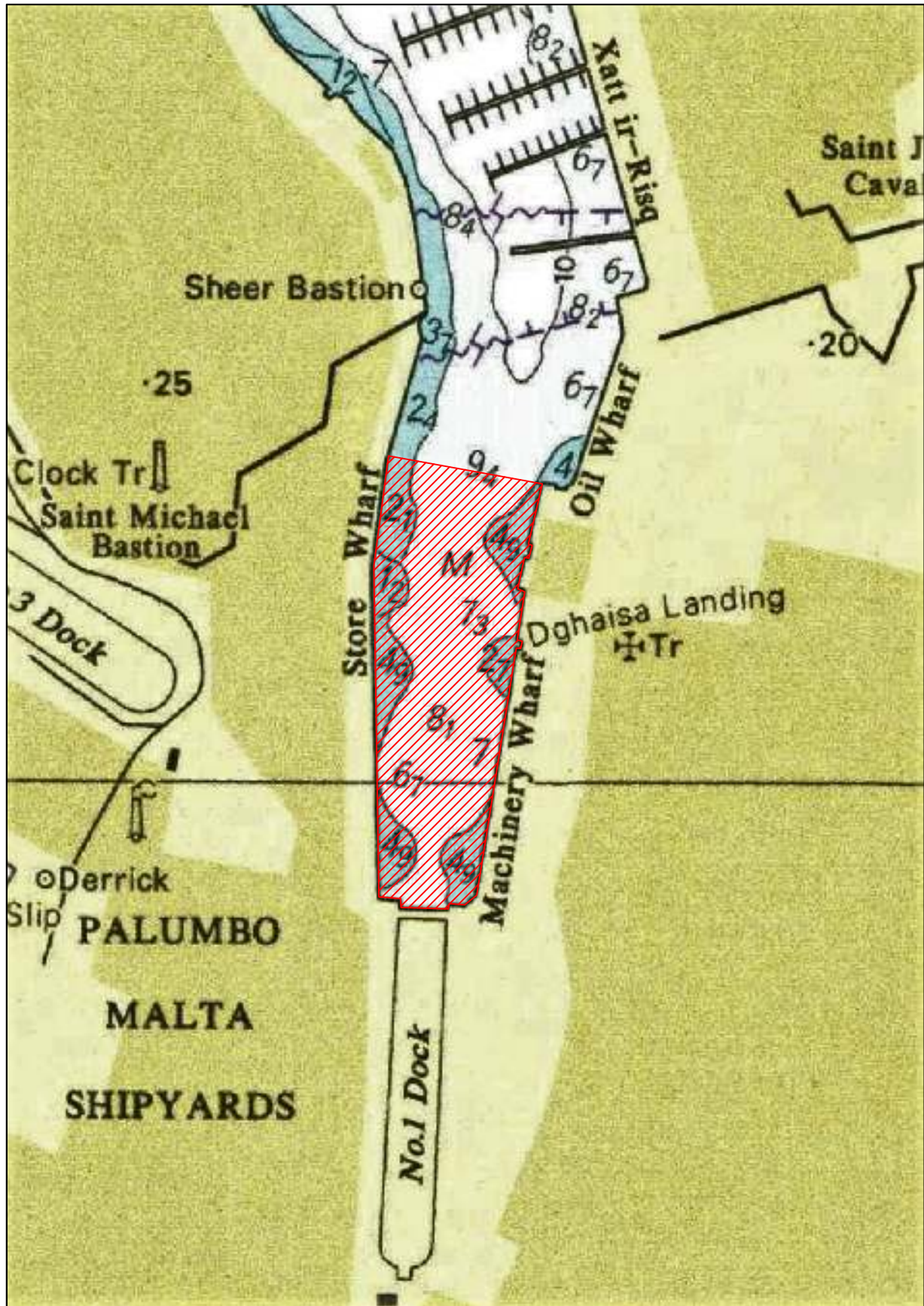
Mariners and operators of vessels are advised not to navigate in the safety zone. Any movements in the proximity of the safety zone are to be coordinated with the survey team onboard the M.V. Atlantis II and with Valletta Port Control (Valletta VTS) on VHF Channel 12.

Masters and operators of vessels are advised to keep a sharp lookout, navigate with caution, minimum speed and give the survey vessel a wide berth.

Instructions given by Valletta Port Control (Valletta VTS) on VHF Channel 12 are to be complied with.

Chart affected: BA 177

Positions referred to WGS 84 DATUM.



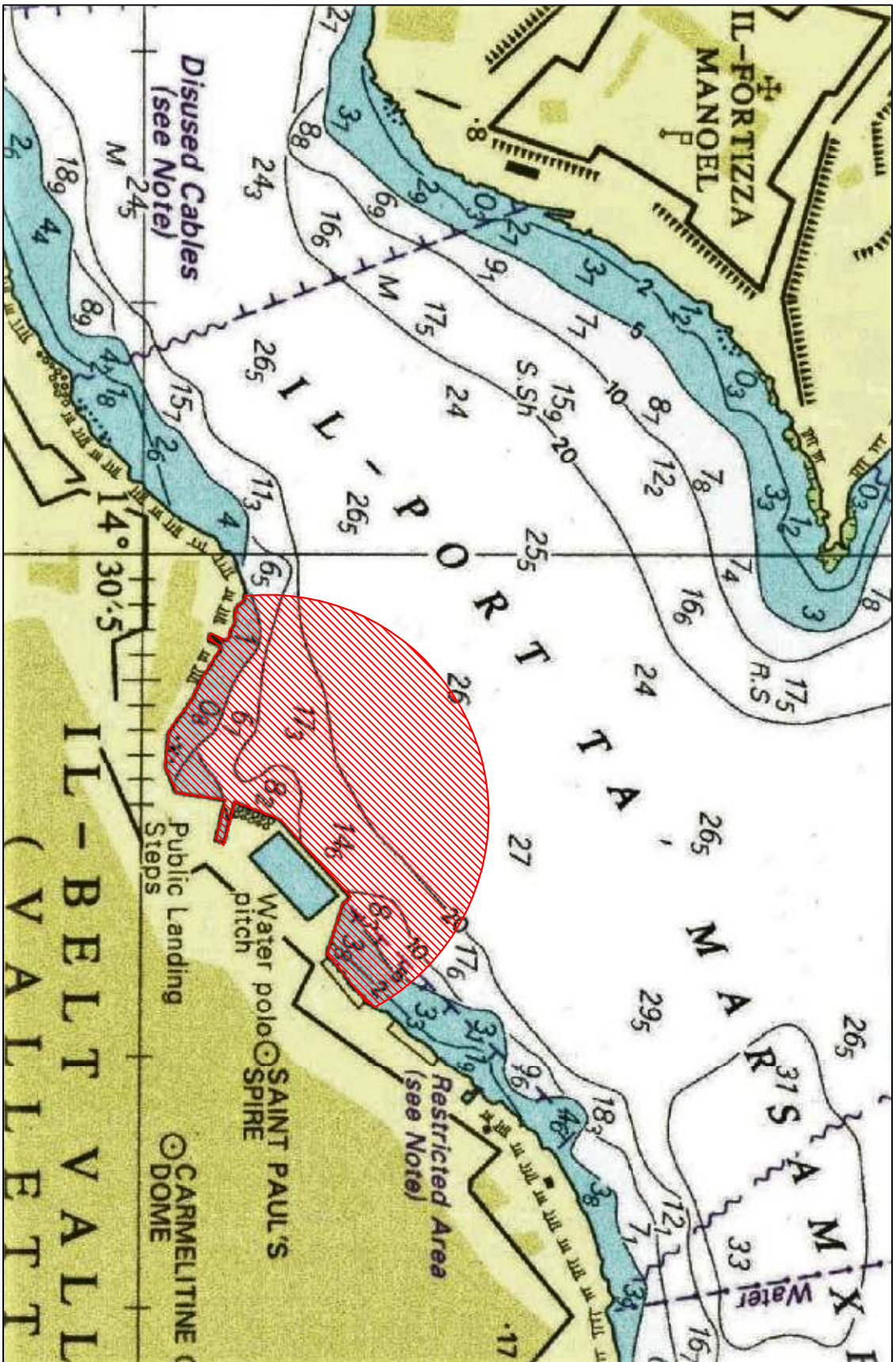
©British Crown Copyright 1970, 1983, 1986, 1988, 1999, 2000. All Rights Reserved

The UK Hydrographic Office makes the accompanying data available to Transport Malta under the terms and conditions of agreement HO1427/020930/01.

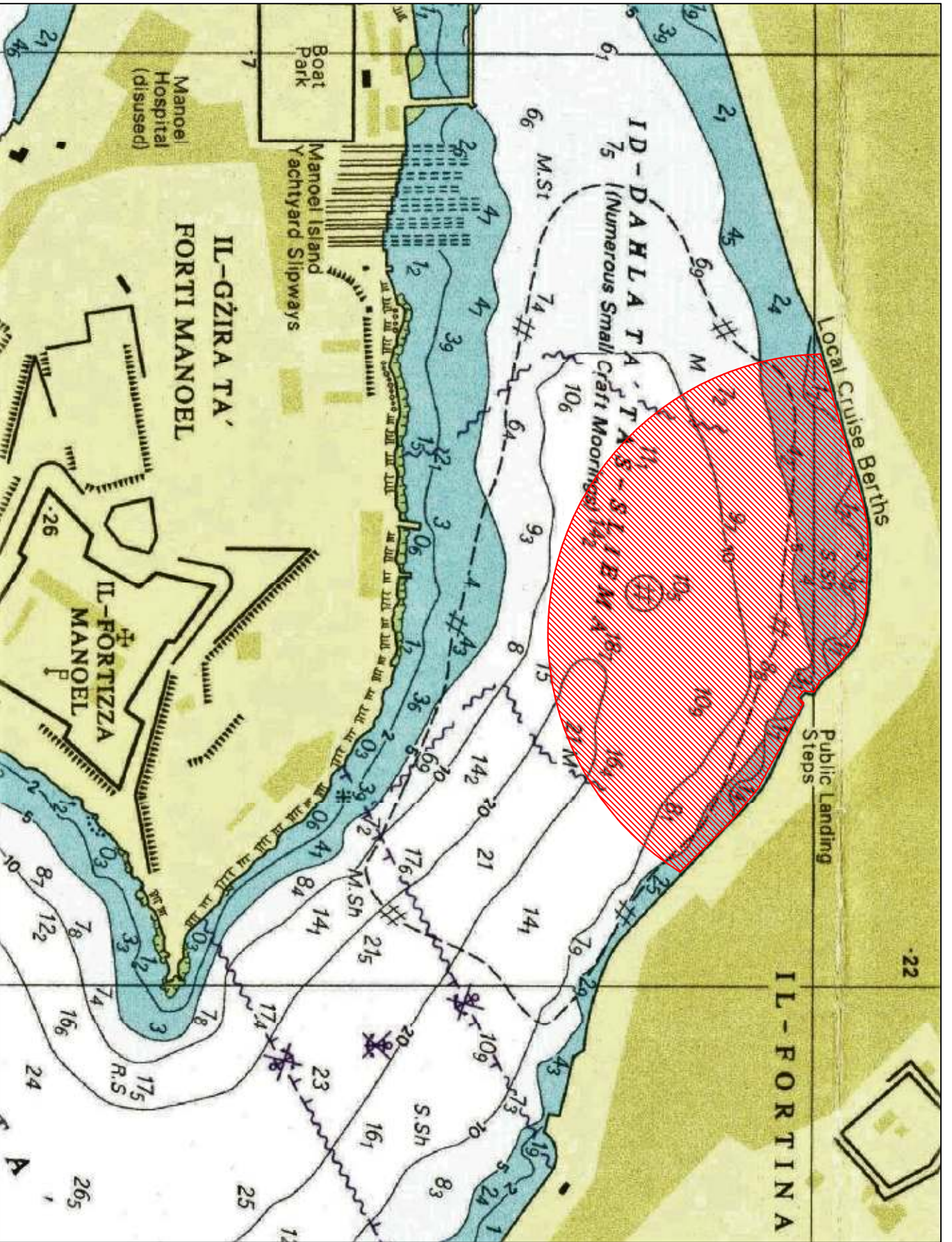
DISCLAIMER

Whilst the UK Hydrographic Office has endeavoured to ensure that the material supplied is suitable for the purpose described, it accepts no liability (to the maximum extent permitted by law) for any damage or loss of any nature arising from this use. The material supplied is used entirely at the Recipient's own risk.

Cospicua Dock No 1



Marsamxett
Waterpolo Pitch



Ordnance Survey Copyright 1971, 1981, 1988, 1989, 1993, 2000. All Rights Reserved.
 The UK Hydrographic Office makes the accompanying information available on a non-exclusive basis for use and reproduction by any person or organization.
 While the UK Hydrographic Office has endeavored to ensure that the material included is available for use, it does not accept any liability for any error or omission, or for any loss or damage, arising from its use. The material is provided as is and may be subject to change without notice.
 DISCLAIMER

Sliema Ferries