



PORTS AND YACHTING DIRECTORATE

Transport Malta

## LOCAL NOTICE TO MARINERS NO 062 of 2018

Our Ref: **TM/PYD/80/98 V**

Malta Transport Centre  
Marsa, MRS 1917  
Malta

Tel: (356) 2122 2203  
Fax: (356) 2125 0365  
Email: [info.tm@transport.gov.mt](mailto:info.tm@transport.gov.mt)

28 June 2018

[www.transport.gov.mt](http://www.transport.gov.mt)

### Shifting of sinkers in front of Sheer Bastion in Dockyard Creek - Grand Harbour

Mariners are informed that works will be carried out in front of Sheer Bastion – The Grand Harbour.

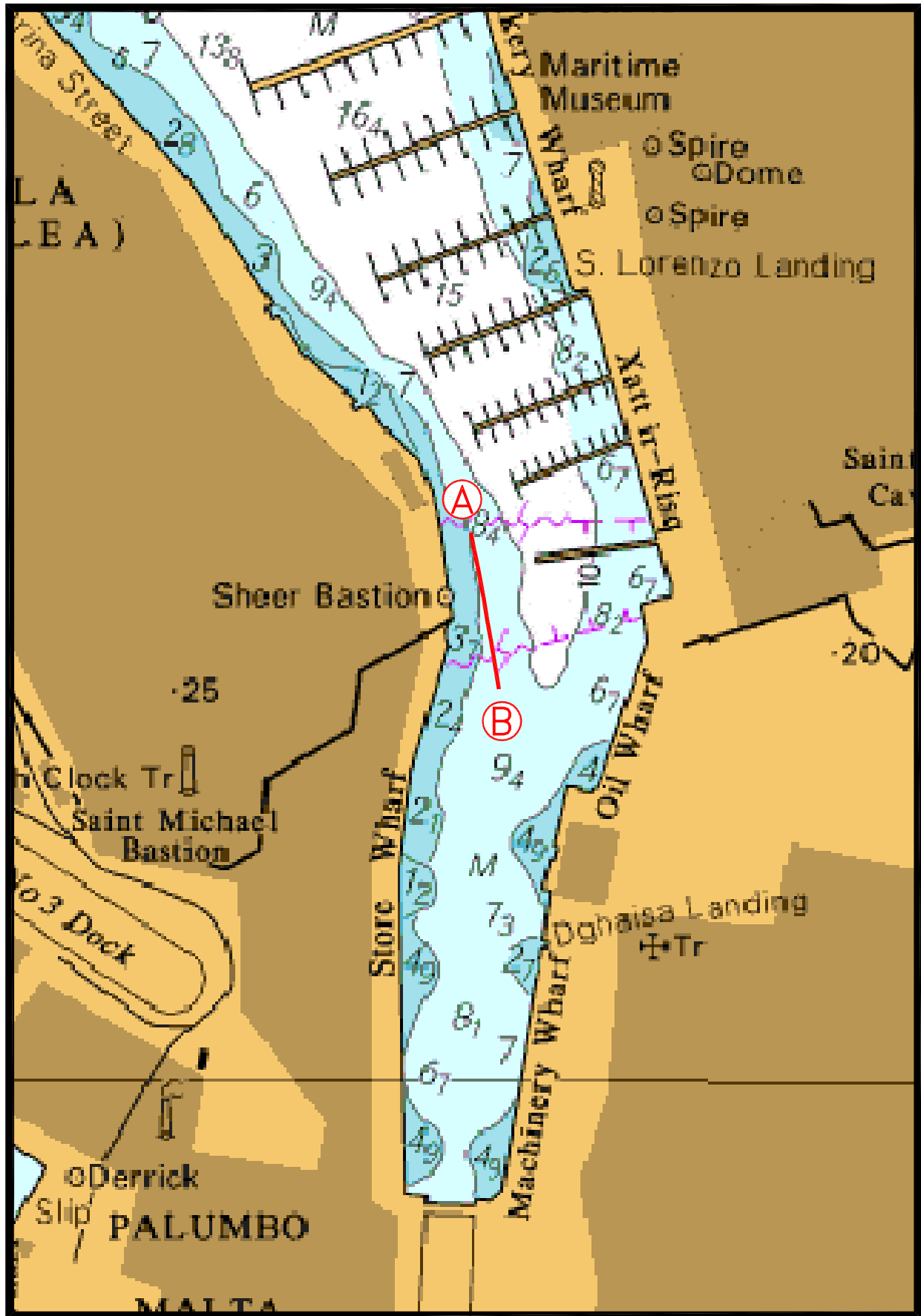
The works will start on Monday 2<sup>nd</sup> July 2018 and will be finished by Saturday 14<sup>th</sup> July 2018. Two buoys with flashing lights will be placed at points A and B. The works will consist of shifting the sinkers using lifting bags and which will be carried out with the assistance of divers who will be working in the area between Sheer Bastion and the line A to B.

Point	Latitude (N)	Longitude (E)
A	35° 53'.147	014° 31'.217
B	35° 53'.106	014° 31'.226

In view of the above entrance to Dockyard Creek is restricted. Only boat owners who have berths at Dockyard Creek and the ferry boat service may enter this area. They are to navigate between the buoys at line A - B and The Grand Harbour Marina

The masters, of vessels which are allowed to enter, are to keep a sharp look out and navigate with extreme caution and at very low speed. They are also to obey any instructions given by Valletta Port Control (Valletta VTS) on VHF channel 12.

**Chart Affected: BA 177**



© British Crown Copyright 1970, 1983, 1986, 1988, 1999, 2000.  
All rights reserved

The UK Hydrographic Office makes the accompanying data available to Transport Malta under the terms and conditions of agreement HO 1427/020930/01.

**DISCLAIMER**

Whilst the UK Hydrographic Office has endeavoured to ensure that the material supplied is suitable for the purpose described, it accepts no liability (to the maximum extent permitted by law) for any damage or loss of any nature arising from its use. The material supplied is used entirely at the Recipient's own risk.