



PORTS AND YACHTING DIRECTORATE

## LOCAL NOTICE TO MARINERS NO 002 of 2019

Our Ref: **TM/PYD 01/19**

02 January 2019



**Transport Malta**

Malta Transport Centre  
Marsa, MRS 1917  
Malta

Tel: (356) 2122 2203  
Fax: (356) 2125 0365  
Email: [info.tm@transport.gov.mt](mailto:info.tm@transport.gov.mt)

[www.transport.gov.mt](http://www.transport.gov.mt)

### **Restricted Areas round Malta due to danger of falling rocks**

The Ports and Yachting Directorate, Transport Malta would like to bring to the attention of all mariners of the danger of falling rocks in caves and from cliff faces, due to the geological structure of the Maltese Islands.

The following areas (shown hatched) are restricted to both vessels and swimmers and should be avoided:

**Il-Ponta ta' Dellimara** - The area bounded by the imagery line A to B and the intermediate coastline (as shown on attached chart 1).

LATITUDE (N)	LONGITUDE (E)	
A	35° 49'.430	014° 33'.381
B	35° 49'.165	014° 33'.539

**Blue Grotto limits of Wied iz-Zurrieq** - The area bounded by the imagery line A to B and the intermediate coastline (as shown on attached chart 2).

LATITUDE (N)	LONGITUDE (E)	
A	35° 49'.272	014° 27'.415
B	35° 49'.307	014° 27'.455

**Il-Veccja – Il-Bajja ta' San Pawl** - The area bounded by the imagery line A to B and the intermediate coastline (as shown on attached chart 3).

A	35° 56'.833	014° 23'.492
B	35° 56'.858	014° 23'.495



Transport Malta

**Qala tal-Ghazzelin – Il-Bajja ta' San Pawl** - The area bounded by the imagery line A to B and the intermediate coastline (as shown on attached chart 4).

A	35° 56'.967	014° 24'.121
B	35° 56'.964	014° 24'.129

**Il-Ponta taz-Zonqor – Il-Bajja ta' Marsascala** - The area bounded by the imagery line A to B to C and the intermediate coastline (as shown on attached chart 5).

A	35° 52'.001	014° 34'.291
B	35° 52'.004	014° 34'.334
C	35° 52'.017	014° 34'.368

**Dawret ix-Xatt – Xghajra** - The area bounded by the imagery line A to B to C and the intermediate coastline (as shown on attached chart 6).

A	35° 53'.129	014° 33'.148
B	35° 53'.121	014° 33'.152
C	35° 53'.113	014° 33'.158

**Il-Munxar, Marsascala** - The area bounded by the imagery line A to B and the intermediate coastline (as shown on attached chart 7).

A	35° 50'.970	014° 34'.300
B	35° 50'.677	014° 34'.067

**Il-Bajja tal-Gnejna** - The area bounded by the imagery line A to B and the intermediate coastline (as shown on attached chart 8).

A	35° 55'.325	014° 20'.643
B	35° 55'.310	014° 20'.644

**Tigne** - The area bounded by the imagery line A to B and the intermediate coastline (as shown on attached chart 9).

A	35° 54'.507	014° 30'.720
B	35° 54'.493	014° 30'.732



Transport Malta

**Xorb I-Ghagin Il-Hoffriet** - The area bounded by the imagery line A to B to C and the intermediate coastline and the imagery line D to E to F and the intermediate coastline (as shown on attached chart 10).

A	35° 50'.313	014° 33'.722
B	35° 50'.267	014° 33'.766
C	35° 50'.248	014° 33'.831
D	35° 50'.344	014° 33'.761
E	35° 50'.323	014° 33'.824
F	35° 50'.285	014° 33'.853

**Il-Bajja ta' San Tumas** - The area bounded by the imagery line A to B to C to D and the intermediate coastline (as shown on attached chart 11).

A	35° 51'.320	014° 34'.041
B	35° 51'.340	014° 34'.113
C	35° 51'.420	014° 34'.142
D	35° 51'.426	014° 34'.231

**Il-Ghar Ghana - Kemmuna** - The area bounded by the imagery line A to B and the intermediate coastline (as shown on attached chart 12).

A	36° 01'.106	014° 19'.469
B	36° 01'.100	014° 19'.495

**L-Imgiebah – Il-Bajja tal-Mellieha** - The area bounded by the imagery line A to B and the intermediate coastline (as shown on attached chart 13).

A	35° 58'.132	014° 22'.841
B	35° 58'.089	014° 22'.889

Mariners are informed that a rope supported by black and white buoys may be placed along all the imaginary lines mentioned above.



Transport Malta

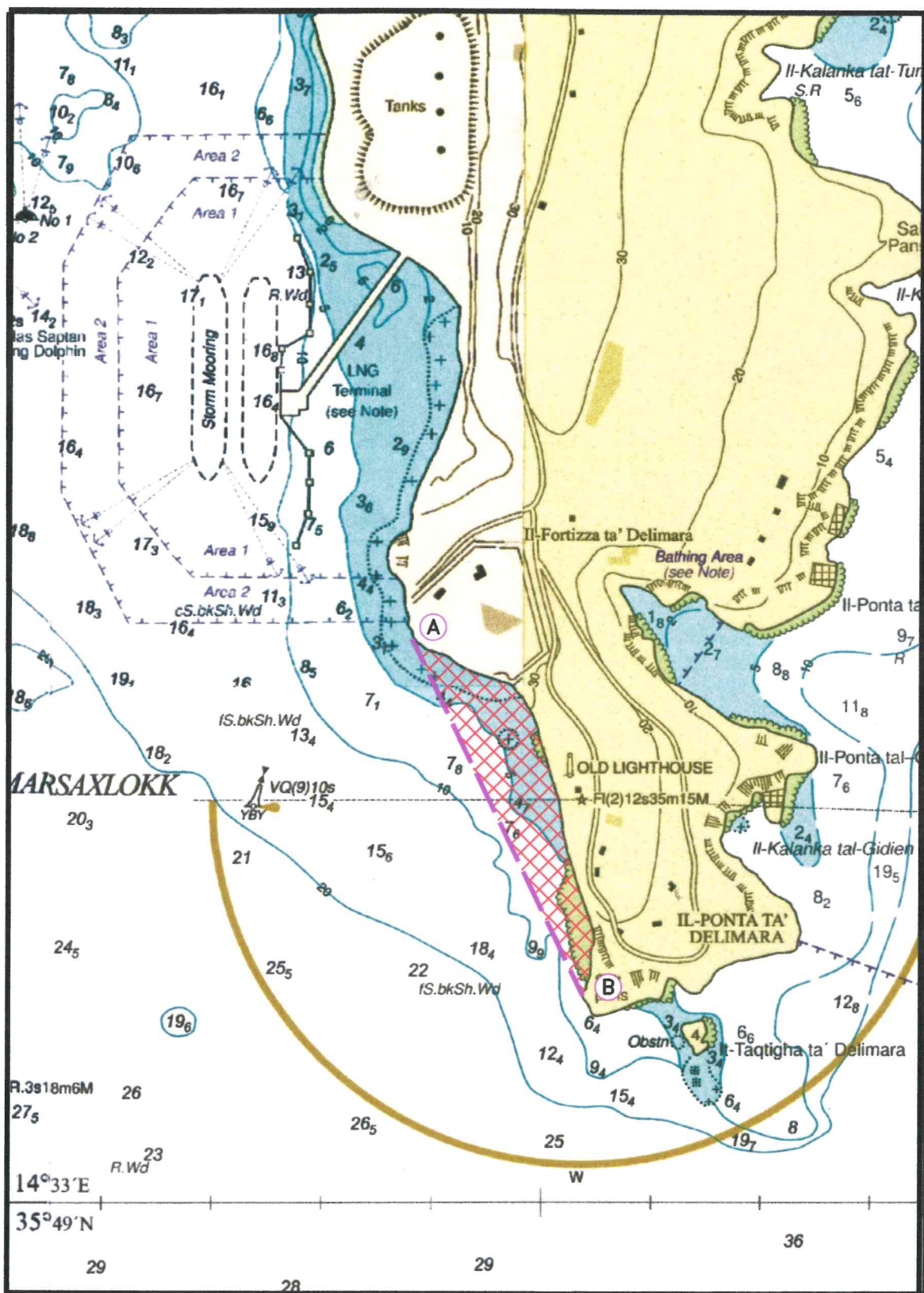
This Local Notice to Mariners is to replace the following which are hereby **CANCELLED**.

Local Notice to Mariners

- 30 of 2015 - Blue grotto falling rocks.
- 58 of 2015 - Falling Rocks at il-Ponta ta' Dellimara.
- 02 of 2016 - Further to Not 30 of 2015 falling Rocks blue grotto.
- 78 of 2016 - Restricted Area at il-Veccja - il-Bajja ta' San Pawl.
- 17 of 2017 - Restricted Area at Qala tal-Ghazzenin - il-Bajja ta' San Pawl.
- 19 of 2017 - Restricted Area at il-Ponta taz-Zonqor - il-Bajja ta' Marsascala.
- 28 of 2017 - Restricted area at Dawret ix-Xatt – Xghajra.
- 101 of 2017 - Falling Rocks at il-Munxar, Marsascala.
- 117 of 2017 - Falling Rocks at Gnejna Bay.
- 57 of 2018 - Restricted area at Tigne.
- 99 of 2018 - Restricted Area at Xorb l-Ghagin – Il-Hoffriet.
- 102 of 2018 - Restricted Area at Il-Bajja ta' San Tumas.
- 104 of 2018 - Restricted Area at Ghar Ghana in Comino.
- 106 of 2018 - Restricted Areas round Malta due to danger of falling rocks.
- 110 of 2018 - Restricted Area at L-Imgiebah - Il-Bajja tal-Mellieha.
- 114 of 2018 - Restricted Area at Xorb l-Ghagin – Il-Hoffriet laying of floats.

The Ports and Yachting Directorate, Transport Malta notifies mariners and owners of vessels that the above list is not comprehensive as such, mariners are to give special attention when entering any cave and to keep at a safe distance from cliff faces all round the Maltese Islands.

Charts affected: BA 36, 177, 194, 211A, 211B, 1537, 2538



© British Crown Copyright 1970, 1983, 1986, 1988, 1999, 2000  
All rights reserved.

The UK Hydrographic Office makes the accompanying data  
Available to Malta Maritime Authority (Transport Malta)  
Under the terms and conditions of agreement HO 1427/020930/01.

#### DISCLAIMER

Whilst the UK Hydrographic Office has endeavoured to ensure  
That the material supplied is suitable for the purpose described,  
It accepts no liability (to the maximum extent permitted by law)  
For any damage or loss of any nature arising from its use.  
The material supplied is used entirely at the Recipient's own risk.

Chart 1

© Transport Malta all rights reserved

#### DISCLAIMER

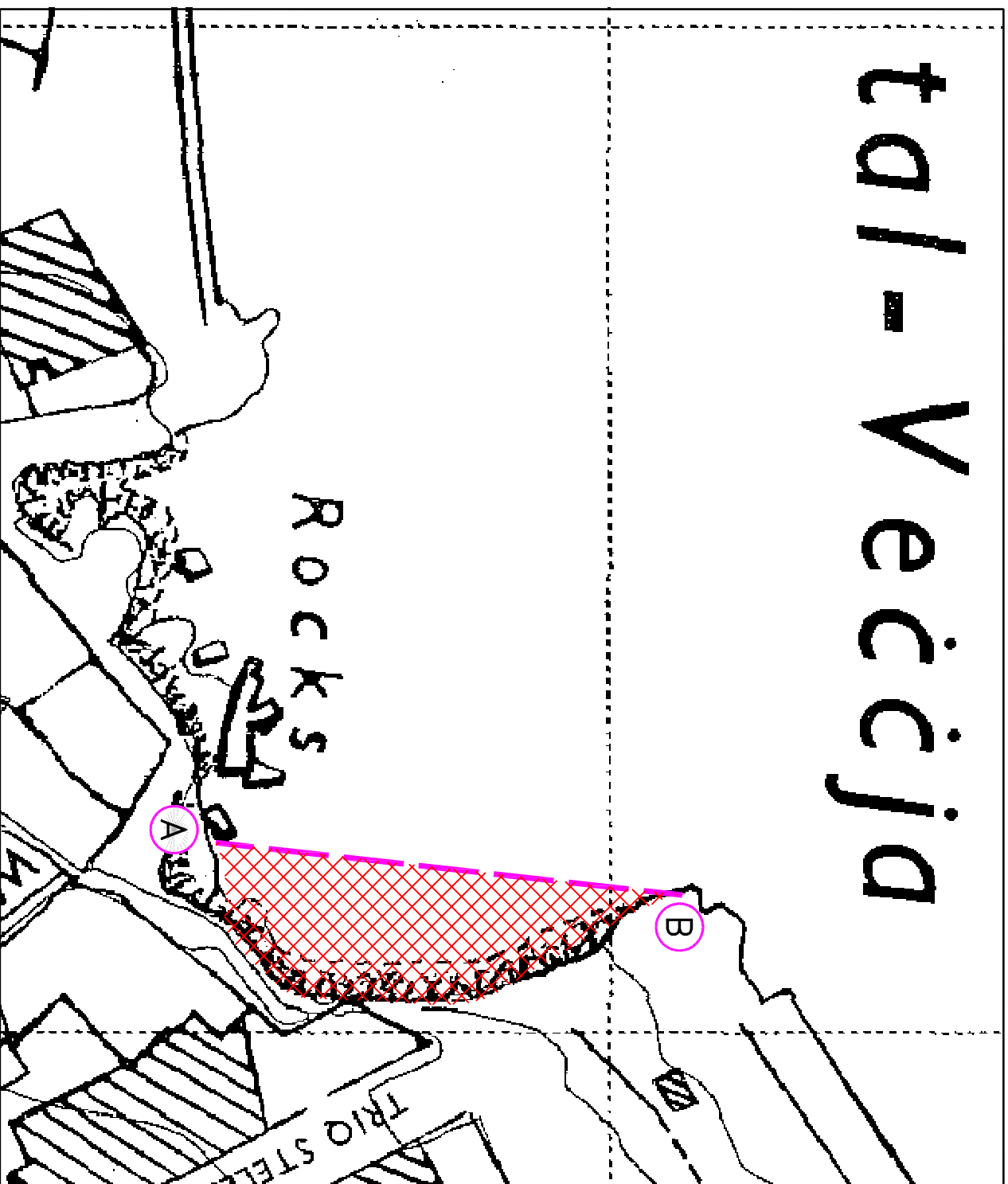
Whilst the Ports and Yachting Directorate, Transport Malta has endeavoured to ensure that the material supplied is suitable for the purpose described, it accepts no liability (to the maximum extent permitted by law) for any damage or loss of any nature arising from its use.

The material supplied is used entirely at the Recipient's own risk.





# ta l - V e ċ ċ j a



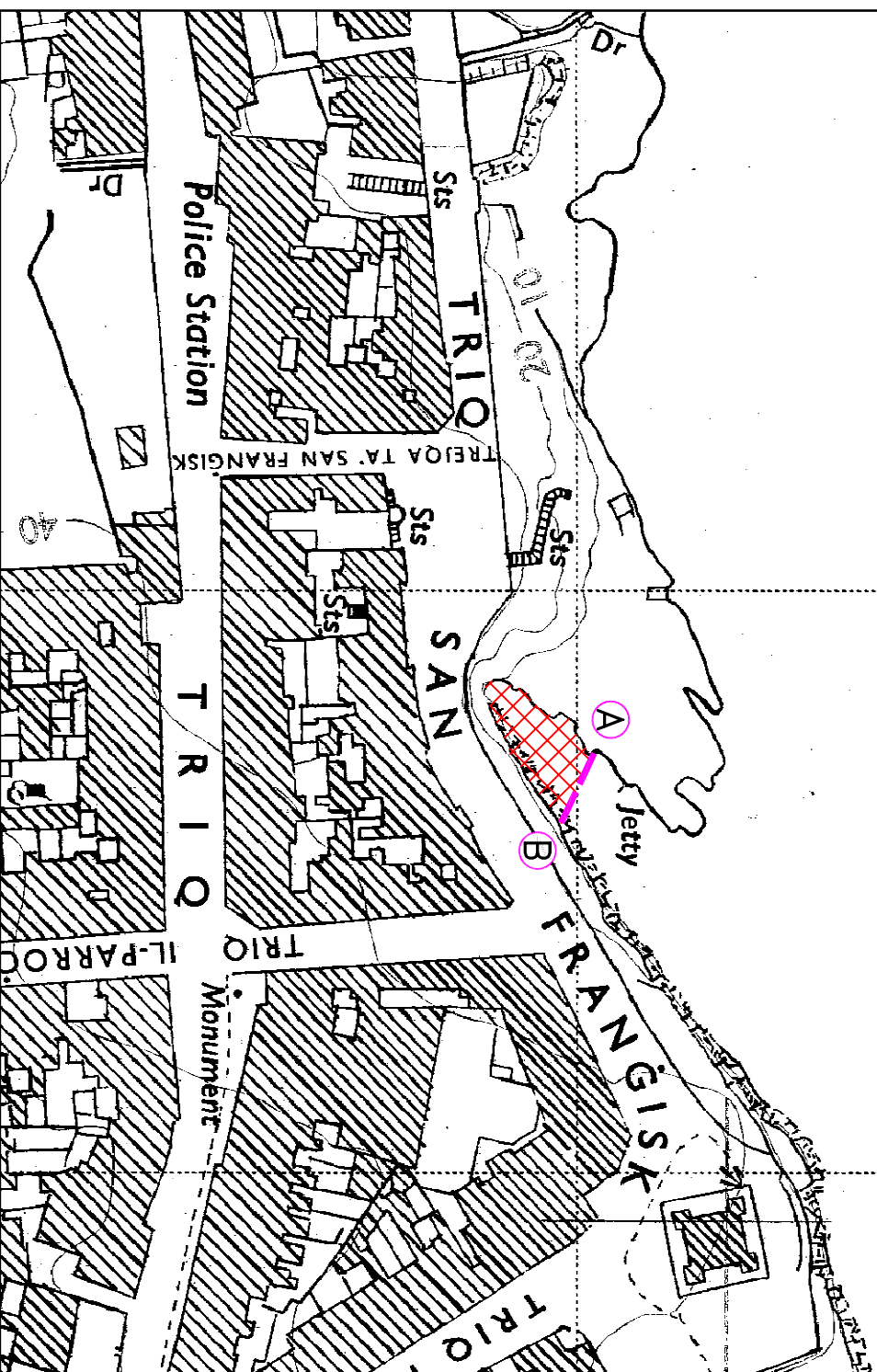
© Transport Malta all rights reserved

## DISCLAIMER

Whilst the Ports and Yachting Directorate, Transport Malta has endeavoured to ensure that the material supplied is suitable for the purpose described, it accepts no liability (to the maximum extent permitted by law) for any damage or loss of any nature arising from its use.

The material supplied is used entirely at the Recipient's own risk.

# Qala tal-Għażiż



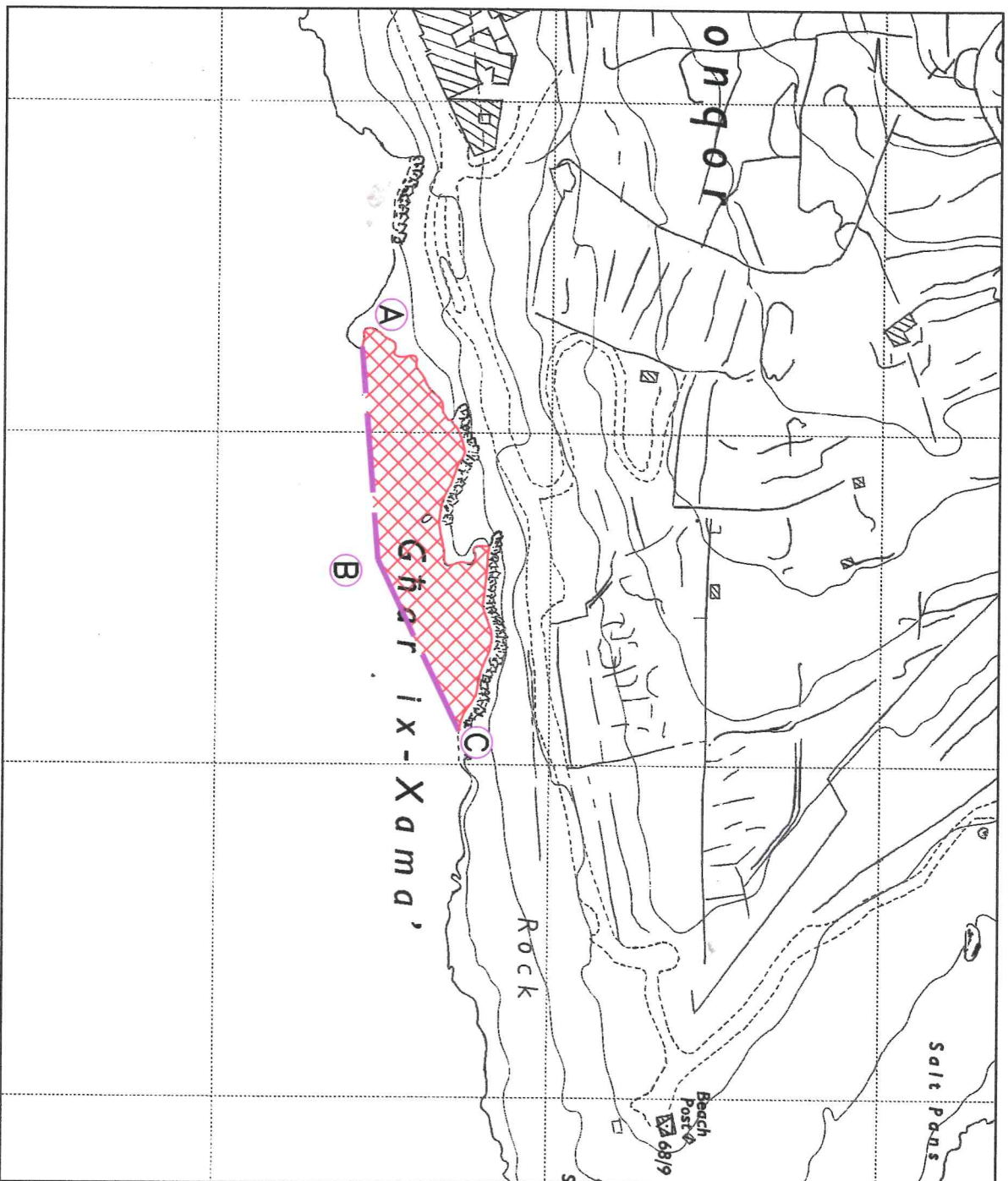
© Transport Malta all rights reserved

## DISCLAIMER

Whilst the Ports and Yachting Directorate, Transport Malta has endeavoured to ensure that the material supplied is suitable for the purpose described, it accepts no liability (to the maximum extent permitted by law) for any damage or loss of any nature arising from its use.

The material supplied is used entirely at the Recipient's own risk.





© Transport Malta all rights reserved

#### DISCLAIMER

Whilst the Ports and Yachting Directorate, Transport Malta has endeavoured to ensure that the material supplied is suitable for the purpose described, it accepts no liability (to the maximum extent permitted by law) for any damage or loss of any nature arising from its use.

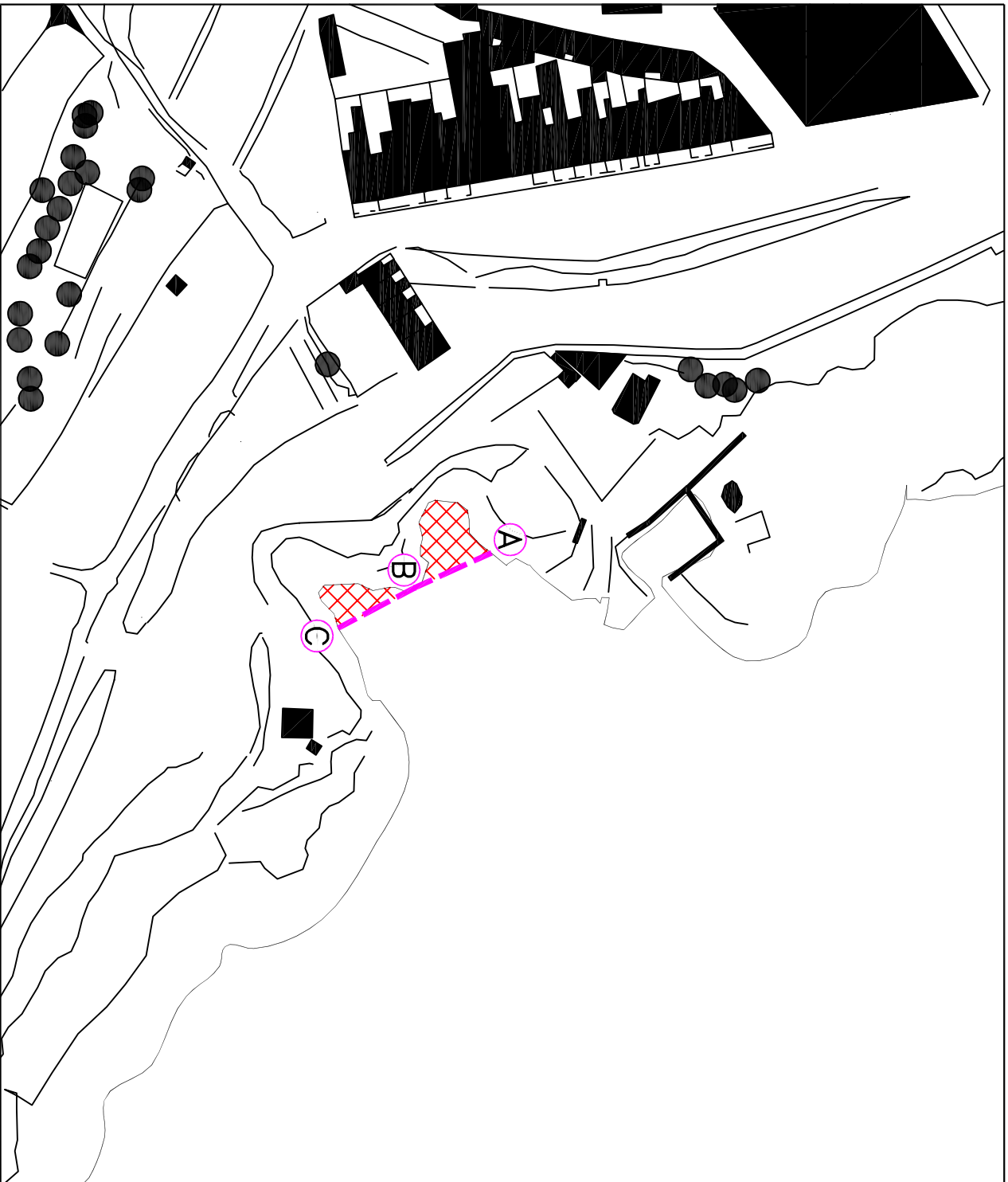
The material supplied is used entirely at the Recipient's own risk.

© Transport Malta all rights reserved

#### DISCLAIMER

Whilst the Ports and Yachting Directorate, Transport Malta has endeavoured to ensure that the material supplied is suitable for the purpose described, it accepts no liability (to the maximum extent permitted by law) for any damage or loss of any nature arising from its use.

The material supplied is used entirely at the Recipient's own risk.



© Transport Malta all rights reserved

#### DISCLAIMER

Whilst the Ports and Yachting Directorate, Transport Malta has endeavoured to ensure that the material supplied is suitable for the purpose described, it accepts no liability (to the maximum extent permitted by law) for any damage or loss of any nature arising from its use.

The material supplied is used entirely at the Recipient's own risk.

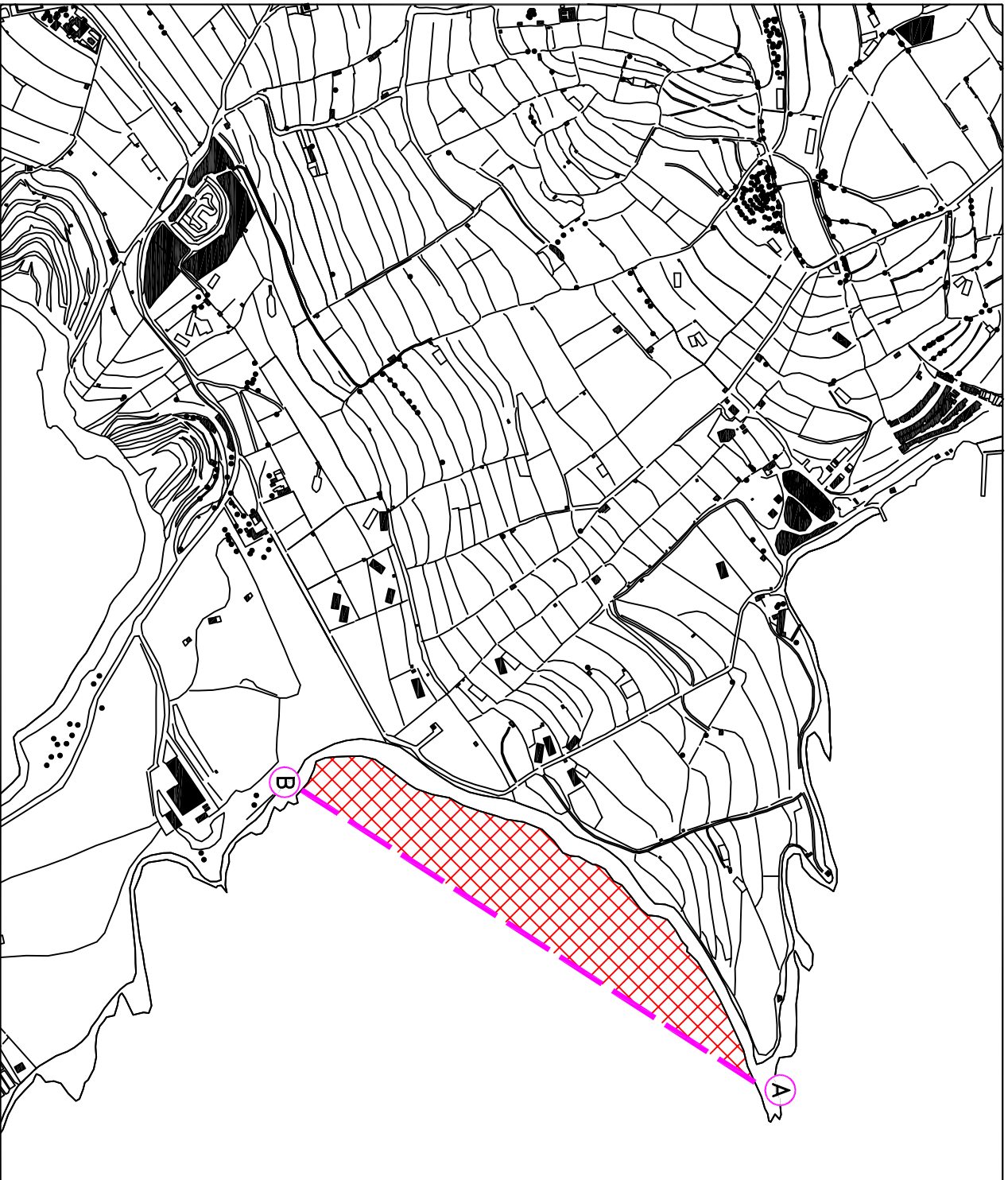
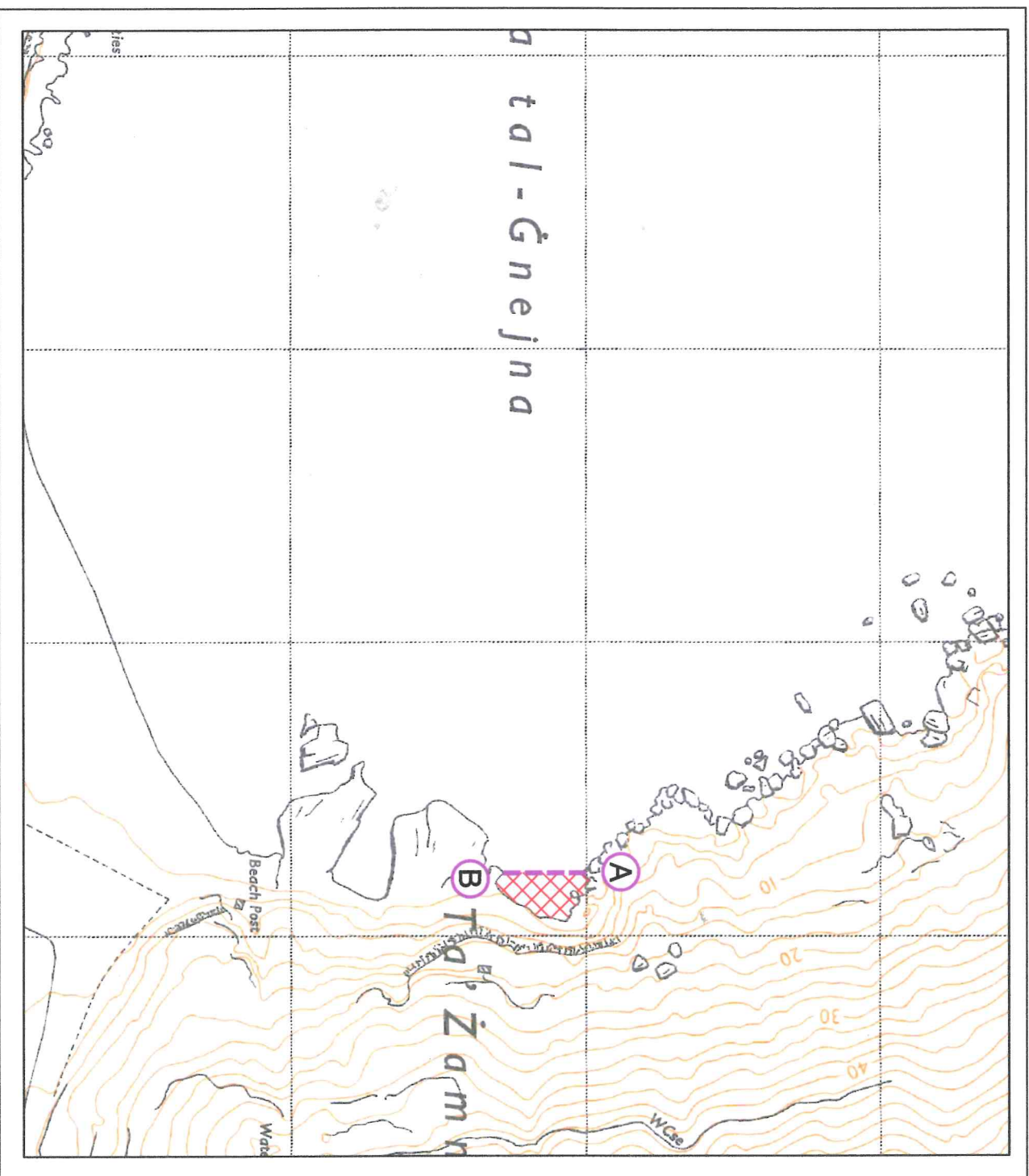


Chart 7



© Transport Malta all rights reserved

#### DISCLAIMER

Whilst the Ports and Yachting Directorate, Transport Malta has endeavoured to ensure that the material supplied is suitable for the purpose described, it accepts no liability (to the maximum extent permitted by law) for any damage or loss of any nature arising from its use.

The material supplied is used entirely at the Recipient's own risk.

Chart 8



© Transport Malta all rights reserved

#### DISCLAIMER

Whilst the Ports and Yachting Directorate, Transport Malta has endeavoured to ensure that the material supplied is suitable for the purpose described, it accepts no liability (to the maximum extent permitted by law) for any damage or loss of any nature arising from its use.

The material supplied is used entirely at the Recipient's own risk.

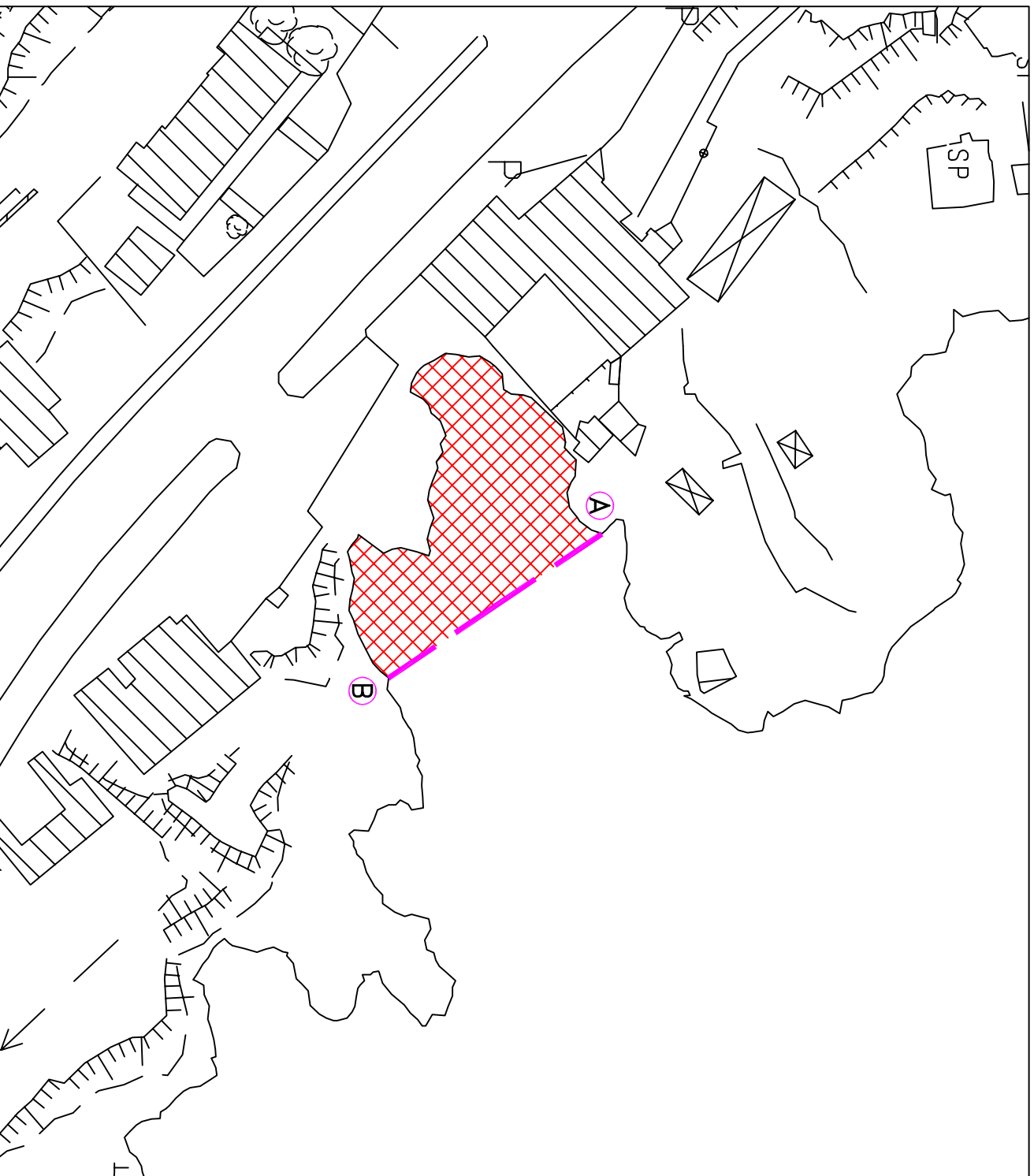
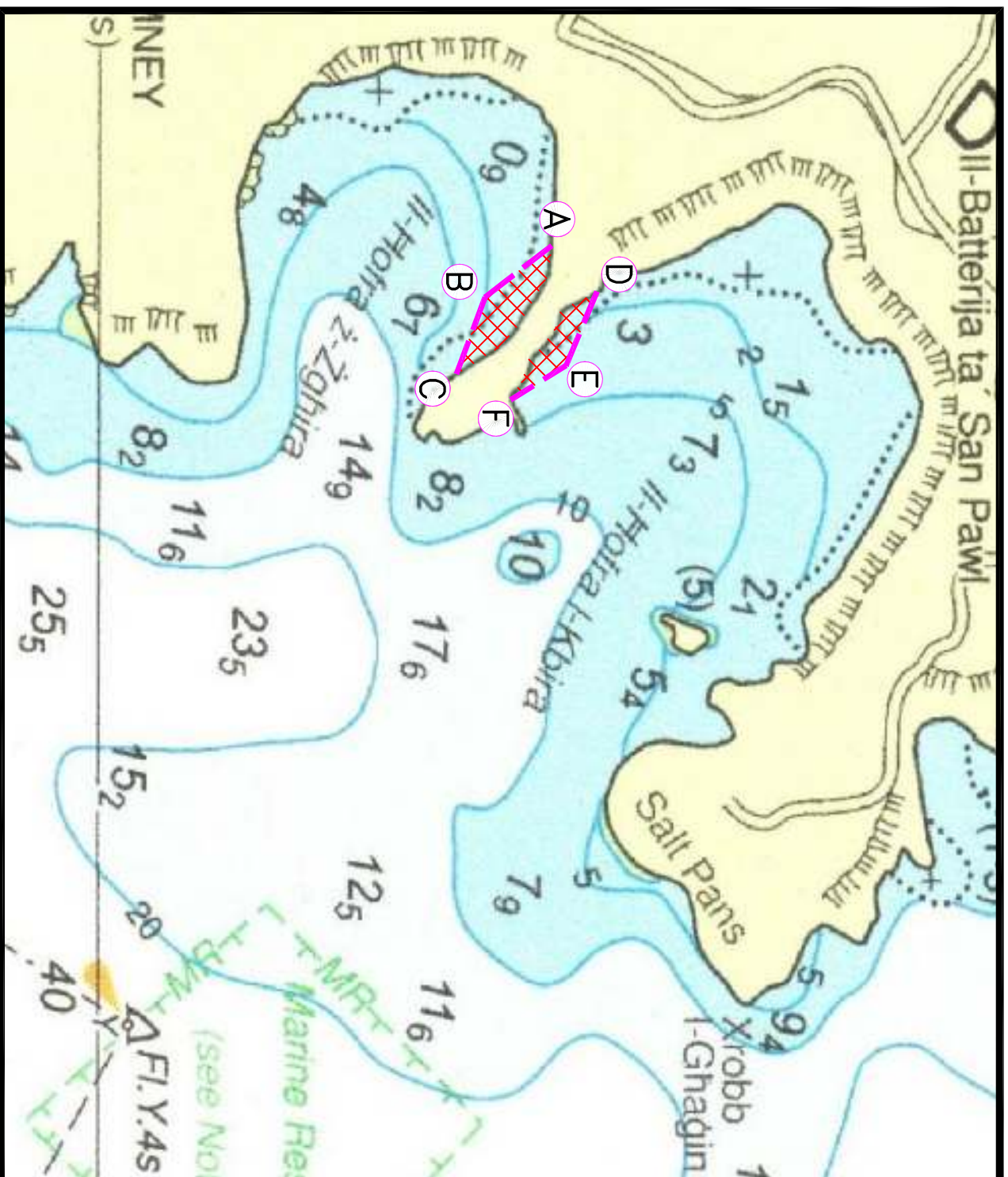


Chart 9



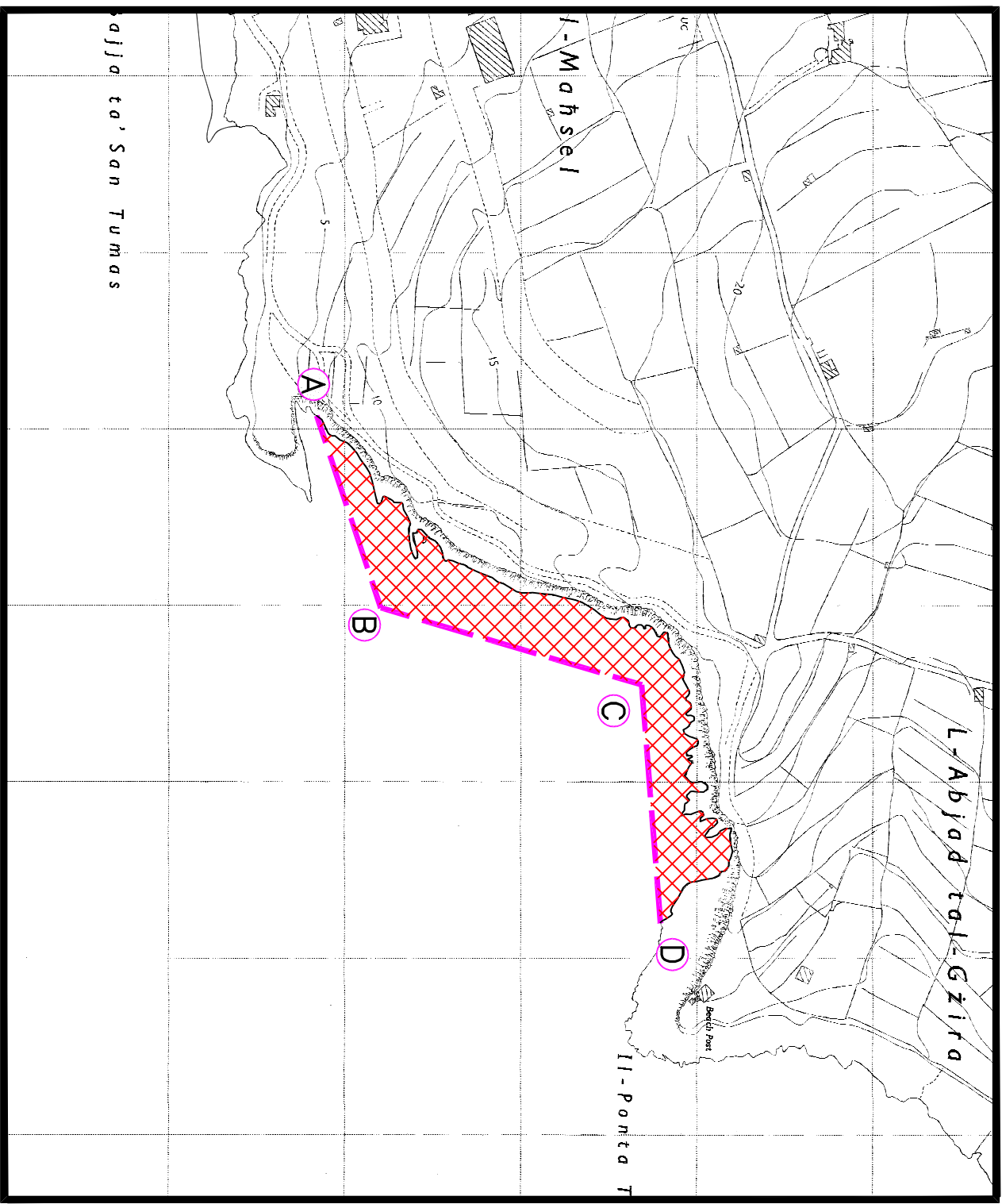
© British Crown Copyright 1970, 1983, 1986, 1988, 1999, 2000  
All rights reserved.

The UK Hydrographic Office makes the accompanying data  
Available to Malta Maritime Authority (Transport Malta)  
Under the terms and conditions of agreement HO 1427/0200930/01.

#### DISCLAIMER

Whilst the UK Hydrographic Office has endeavoured to ensure  
That the material supplied is suitable for the purpose described,  
It accepts no liability (to the maximum extent permitted by law)  
For any damage or loss of any nature arising from its use.  
The material supplied is used entirely at the Recipient's own risk.



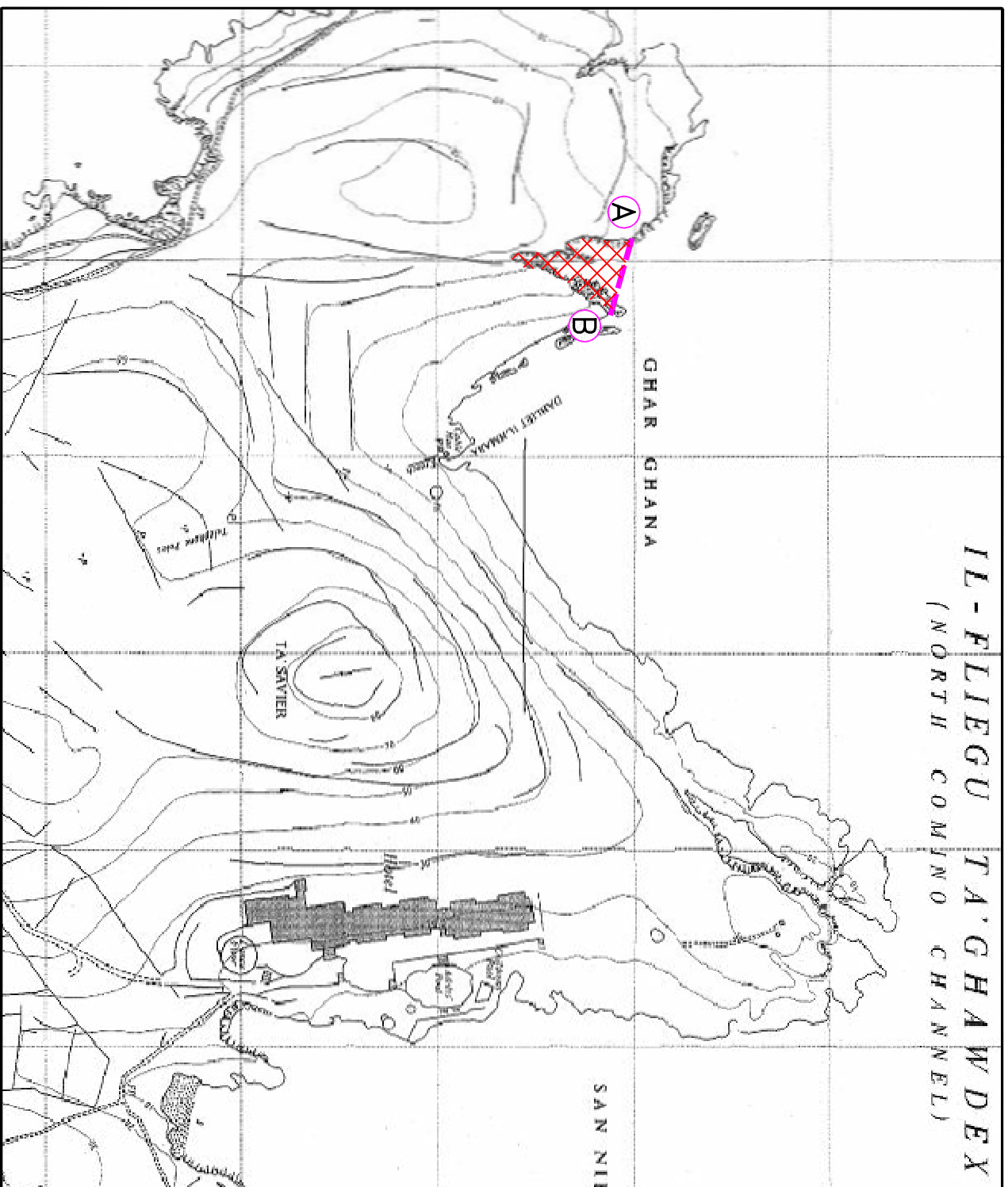


© Transport Malta all rights reserved

**DISCLAIMER**

Whilst the Ports and Yachting Directorate, Transport Malta has endeavoured to ensure that the material supplied is suitable for the purpose described, it accepts no liability (to the maximum extent permitted by law) for any damage or loss of any nature arising from its use.

The material supplied is used entirely at the Recipient's own risk.



© Transport Malta all rights reserved

#### DISCLAIMER

Whilst the Ports and Yachting Directorate, Transport Malta has endeavoured to ensure that the material supplied is suitable for the purpose described, it accepts no liability (to the maximum extent permitted by law) for any damage or loss of any nature arising from its use.

The material supplied is used entirely at the Recipient's own risk.

© Transport Malta all rights reserved

#### DISCLAIMER

Whilst the Ports and Yachting Directorate, Transport Malta has endeavoured to ensure that the material supplied is suitable for the purpose described, it accepts no liability (to the maximum extent permitted by law) for any damage or loss of any nature arising from its use.

The material supplied is used entirely at the Recipient's own risk.

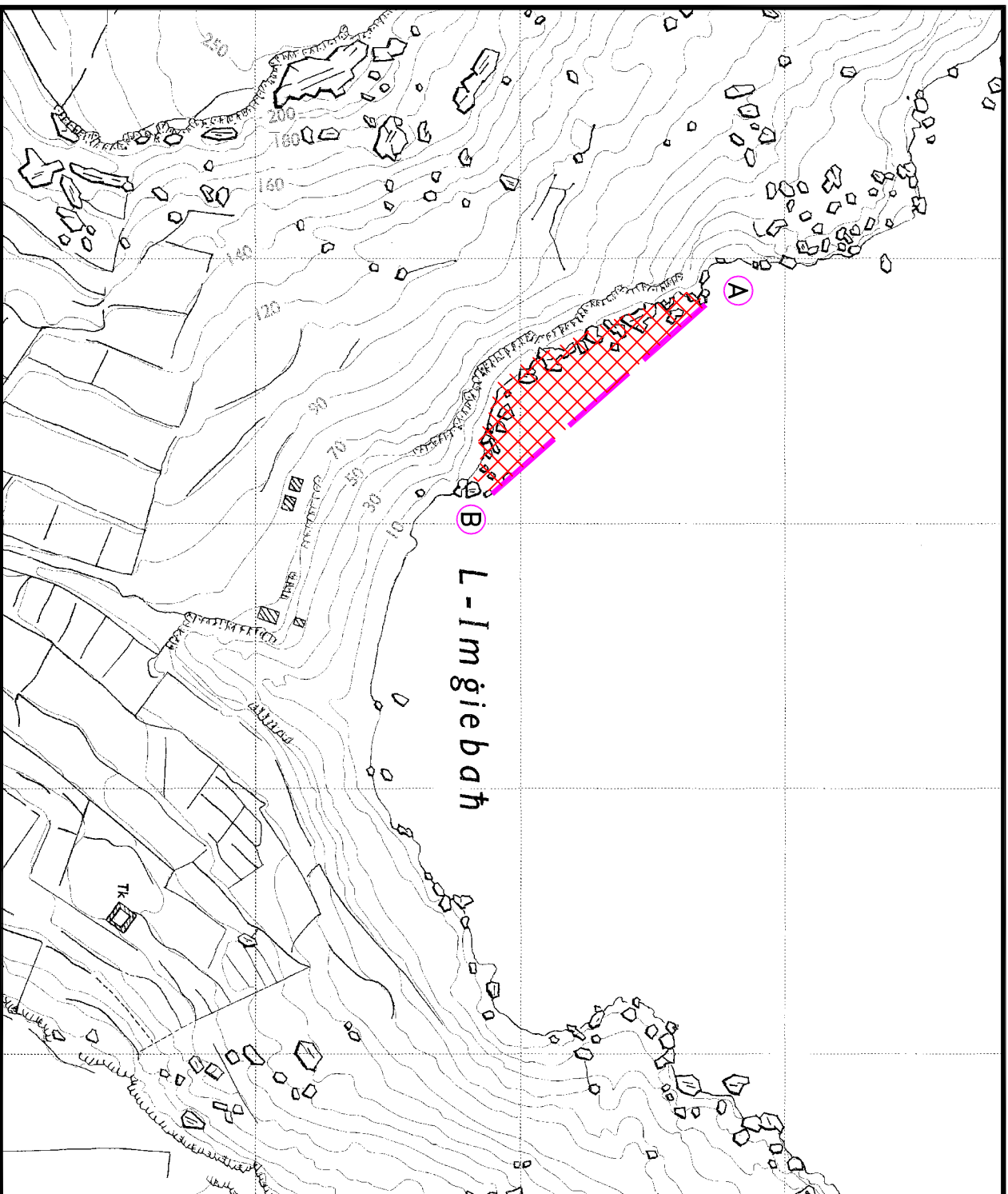


Chart 13