



PORTS AND YACHTING DIRECTORATE

LOCAL NOTICE TO MARINERS No 99 OF 2017

Our Ref: MT/PYD/01/17

7 September 2017

Malta Transport Centre
Marsa, MRS 1917
Malta

Tel: (356) 2122 2203
Fax: (356) 2125 0365
Email: info.tm@transport.gov.mt

www.transport.gov.mt

Navigational Restrictions Grand Harbour, Valletta - 15 September 2017

The Ports and Yachting Directorate, Transport Malta notifies mariners that there will be navigation restrictions in The Grand Harbour, Valletta on the 15th September 2017, in connection with the 13th Arraiolos Group meeting which is to be held in Malta between 14 and 15 September 2017

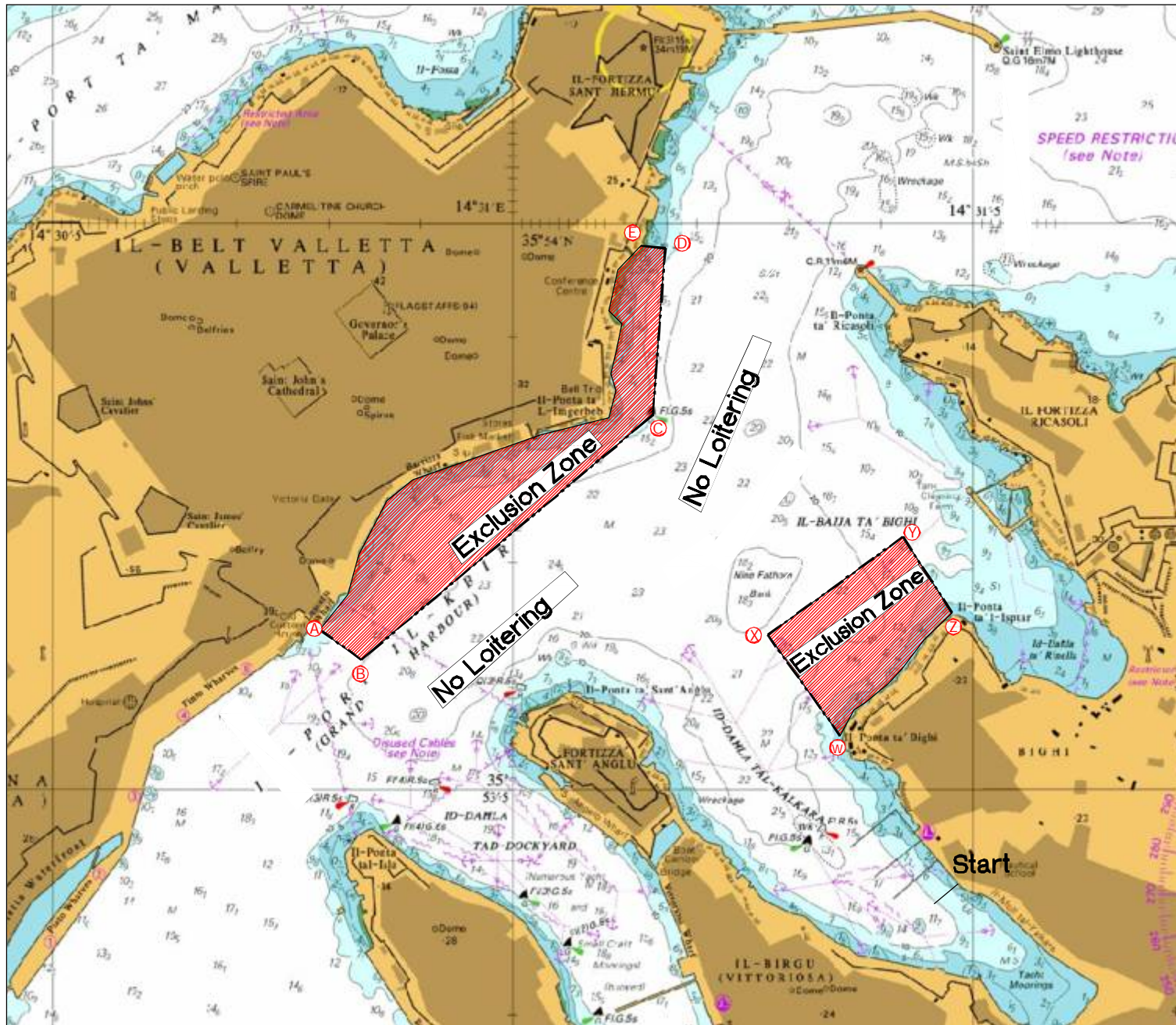
Reference is made to attached chart.

The hatched areas in red, marked by imaginary boundary A, B, C, D and E off Barriera Wharf and by imaginary boundary W, X, Y, and Z off Bighi, will be exclusion zones, while no loitering will be allowed in the channel between the two indicated areas on the 15th September 2017, between 0900 hours and 1500 hours. Furthermore any vessels that are moored in the above areas are to be removed immediately. No vessel is to remain in these exclusion areas on the above date.

Mariners are to note the above and contact Valletta Port Control (Valletta VTS) for instructions prior to any navigation in or out of Grand Harbour on this date. Any instructions issued by Valletta Port Control (Valletta VTS), the AFM, the Police and the Maritime Security Enforcement Unit of Transport Malta are to be complied with.

Positions referred to WGS 84 DATUM.

Chart Affected: BA Chart 177



©British Crown Copyright 1970, 1983, 1986, 1988, 1999, 2000.
All rights reserved

The UK Hydrographic Office makes the accompanying data available to Transport Malta under the terms and conditions of agreement HD 1427/020930/01.

DISCLAIMER

Whilst the UK Hydrographic Office has endeavoured to ensure that the material supplied is suitable for the purpose described, it accepts no liability (to the maximum extent permitted by law) for any damage or loss of any nature arising from its use. The material supplied is used entirely at the Recipient's own risk.