



Transport Malta

Malta Transport Centre
Marsa, MRS 1917
Malta

Tel: (356) 2122 2203
Fax: (356) 2125 0365
Email: info.tm@transport.gov.mt

www.transport.gov.mt

PORTS AND YACHTING DIRECTORATE

LOCAL NOTICE TO MARINERS NO 95 of 2015

Our Ref: TM/PYD/133/96 V

11 December 2015

Diving Operations and Research Activities in Marsaxlokk Harbour

The Ports and Yachting Directorate, Transport Malta, notifies mariners that diving and research operations will be carried out in Marsaxlokk harbour. The field work will start on Tuesday 15 December 2015 and they are expected to be completed by the end of December 2015

The work will be carried out within the area hatched in red on attached chart.

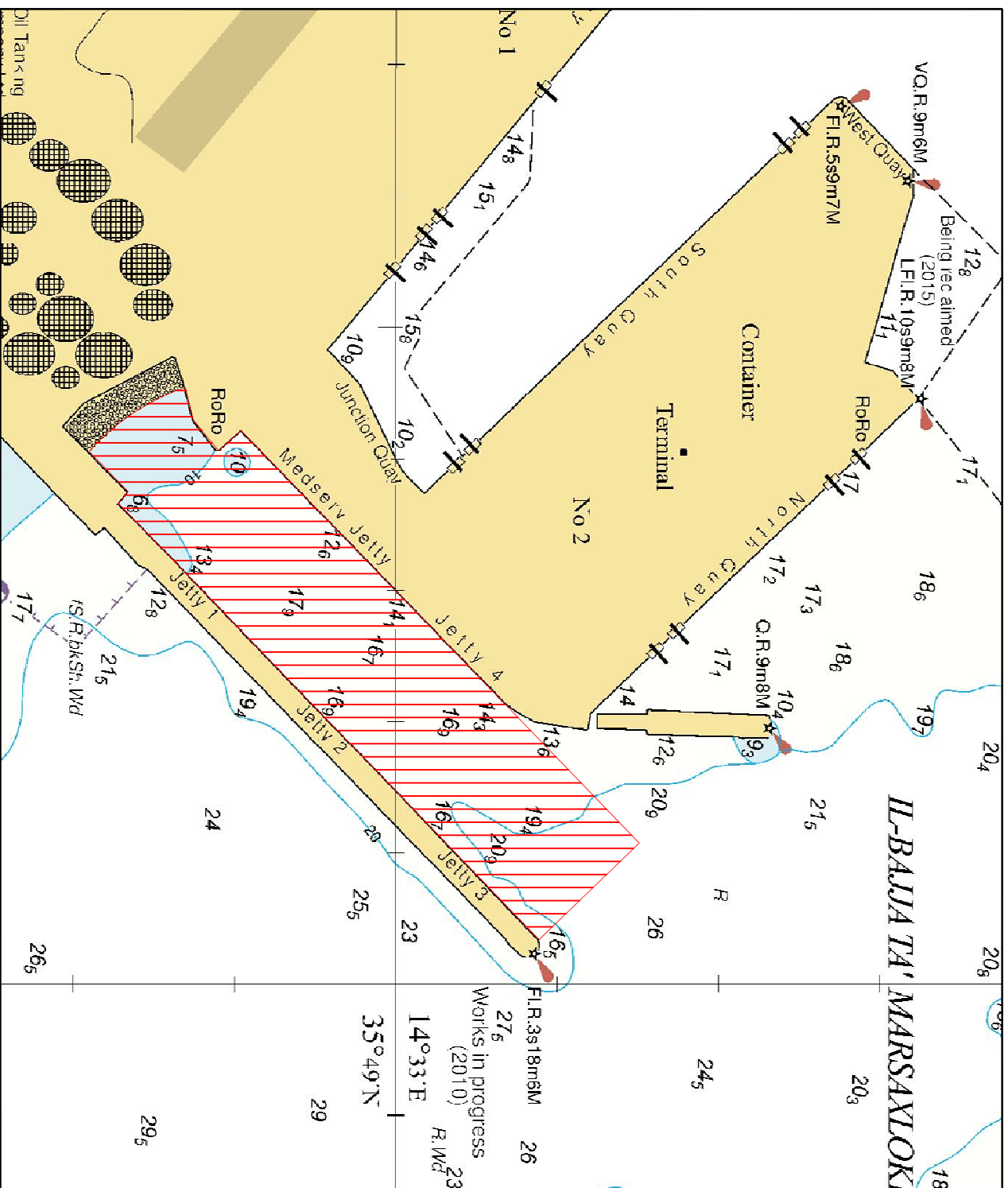
The divers will be using the motor vessel 'ODALISQUE'. The support vessel will be displaying the International Code of Signals Flag 'A' and will have restricted maneuverability.

Mariners and operators of sea craft are advised to keep a sharp lookout and proceed at slow speed while navigating in the area. They are to give the support vessel a wide berth of at least 200 metres.

Moreover, they are requested to comply with instructions given by Marsaxlokk Port Control (VTS) on VHF Channel 14.

Chart affected: BA 36

Positions referred to WGS 84 DATUM.



©British Crown Copyright 1970, 1983, 1986, 1988, 1999, 2000.
All rights reserved

The UK Hydrographic Office makes the accompanying data available to Transport Malta under the terms and conditions of agreement HD 1427/020930/01.

DISCLAIMER

Whilst the UK Hydrographic Office has endeavoured to ensure that the material supplied is suitable for the purpose described, it accepts no liability (to the maximum extent permitted by law) for any damage or loss of any nature arising from its use. The material supplied is used entirely at the Recipient's own risk.