



Transport Malta

PORTS AND YACHTING DIRECTORATE

LOCAL NOTICE TO MARINERS NO 94 of 2016

Our Ref: TM/PYD/46/06 Vol II

31 October 2016

Malta Transport Centre
Marsa, MRS 1917
Malta

Tel: (356) 2122 2203
Fax: (356) 2125 0365
Email: info.tm@transport.gov.mt

www.transport.gov.mt

Part of Marsaxlokk Bay – Restricted to Navigation

The Ports and Yachting Directorate, Transport Malta, notifies all mariners and vessel operators that part of Marsaxlokk Bay may be restricted to Navigation **with immediate effect** and until **Wednesday 30th November 2016**.

The area where Navigation is restricted is delineated by the imaginary lines between the points A, B, C, D and the intermediate coastline (shown hatched in red on attached chart).

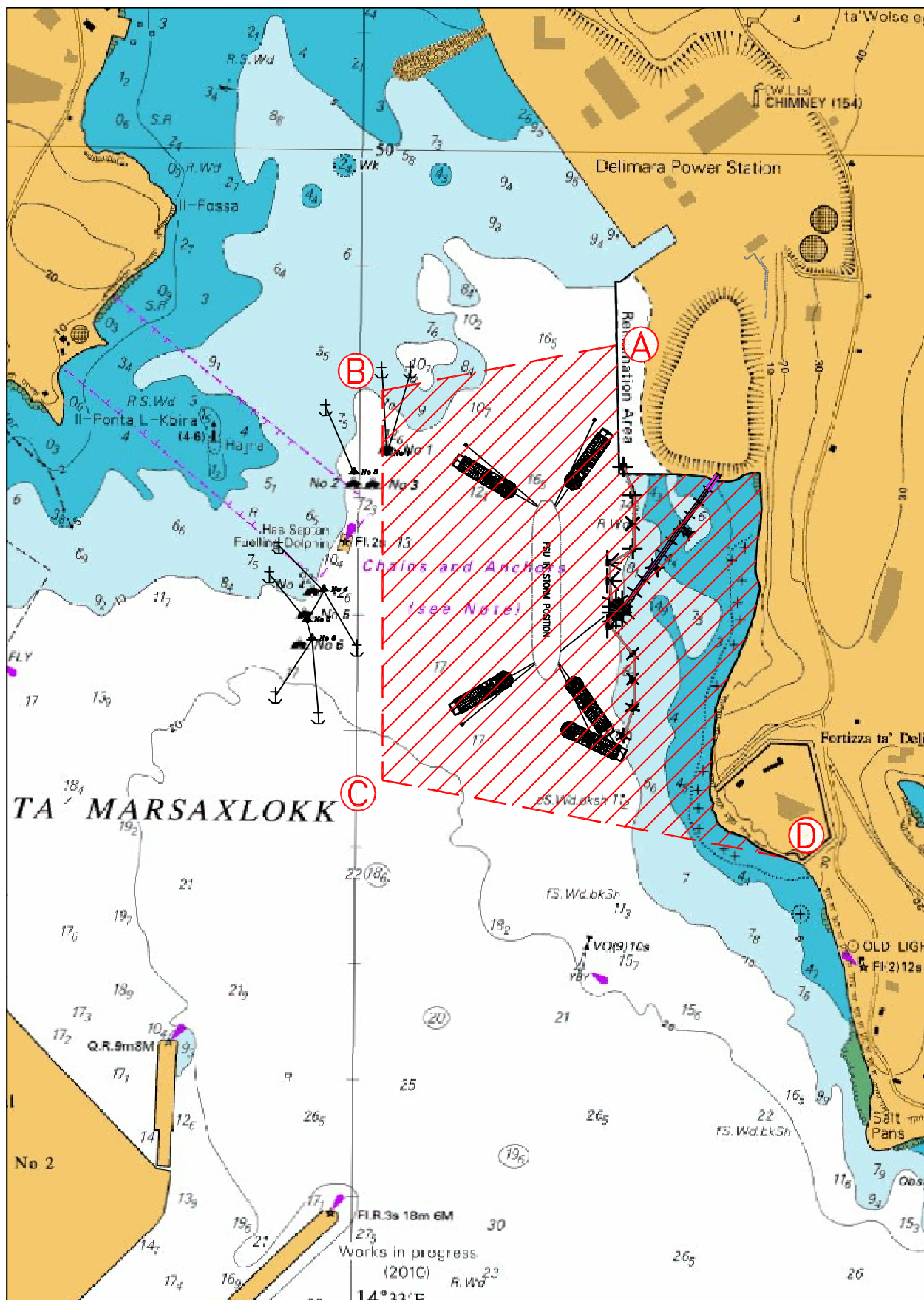
Point	Latitude (N)	Longitude (E)	
A	35° 49'.824	014° 33'.266	Coast
B	35° 49'.788	014° 33'.020	
C	35° 49'.454	014° 33'.022	
D	35° 49'.389	014° 33'.448	Coast

The said area will be monitored by a supporting vessel day and night.

All vessels must obtain clearance from Marsaxlokk VTS before transiting the restricted area.

Mariners are requested to keep a sharp look out, give a wide berth to the above mentioned area and to slow down while passing nearby. Mariners and vessel operators are to keep watch on VHF Channel 14 for updates regarding the above restriction and cooperate with the supporting vessel in the area. They are to comply with instructions issued by Marsaxlokk VTS (Marsaxlokk Port Control) and the supporting vessel on site.

Charts affected: BA 36.



©British Crown Copyright 1970, 1983, 1986, 1988, 1999, 2000.
All rights reserved

The UK Hydrographic Office makes the accompanying data
available to Transport Malta under the terms and
conditions of agreement HD 1427/020930/01.

DISCLAIMER

Whilst the UK Hydrographic Office has endeavoured to ensure
that the material supplied is suitable for the purpose described,
it accepts no liability (to the maximum extent permitted by law)
for any damage or loss of any nature arising from its use.
The material supplied is used entirely at the Recipient's own risk.