



PORTS AND YACHTING DIRECTORATE

Transport Malta

LOCAL NOTICE TO MARINERS NO 76 of 2015

Our Ref: TM/PYD//220/94 Vol. II

23 September 2015

Malta Transport Centre
Marsa, MRS 1917
Malta

Tel: (356) 2122 2203
Fax: (356) 2125 0365
Email: info.tm@transport.gov.mt

www.transport.gov.mt

Rolex Middle Sea Race 2015

The Ports and Yachting Directorate, Transport Malta, notifies that the Royal Malta Yacht Club will be holding the Rolex Middle Sea Race on Saturday, 17 October 2015. In addition a coastal race will also be held on Wednesday 14 October 2015.

The race programme is as follows:

a. Wednesday, 14 October 2015

The Malta Rolex Coastal Race starts at 1000 hours.

The start is from Marsamxett Harbour, and depending on the weather conditions, will proceed either to Comino and/or Gozo or to Munxar and/or Filfa and finish at Marsamxett Harbour.

Mariners are requested to keep the Marsamxett fairway clear during the start of the Coastal race and to keep a sharp lookout during the remaining hours of Wednesday, 15 October 2015.

b. Saturday, 17 October 2015

The Rolex Middle Sea Race starts at approximately 1100 hours.

The start is from Grand Harbour, at an imaginary line from Saint Angelo Point to the Valletta Saluting Battery mast.

The yachts shall then proceed in a North - Easterly direction along the Channel in Grand Harbour where a yellow inflatable buoy will be positioned outside the Saint Elmo Breakwater, shall be left to port. (Buoy shown as 1 on Charts attached)

The yachts shall then proceed in the direction of St George's shoals towards a second yellow inflatable buoy (buoy shown as 2 on chart 2 attached). The buoy (2) shall be left to starboard.

The yachts shall then proceed in a North Easterly direction towards Sicily.

Mariners are advised that on Saturday 17 October, 2015 between 0900 hours and 1300 hours or such time as may be communicated by Valletta Port Control (Valletta



Transport Malta

VTS) if earlier, the Grand Harbour shall be closed for all traffic not directly related to the race. Between these times all other vessels shall be required to remain within designated areas in the inner harbour up to Ras Hanzir, in Dockyard Creek, Kalkara Creek and Rinella Bay. (Areas are shown hatched in magenta on chart 1).

Mariners are to navigate with caution and to keep a sharp lookout when in the vicinity to the above-mentioned courses and positions and when sighted, give the participants a wide berth. They are to obey any instructions that are issued by Valletta Port Control (Valletta VTS), AFM Patrol Boats and Transport Malta, Enforcement Vessels that are in the area.

Positions are in WGS 84 Datum.

Chart affected BA Chart 177.

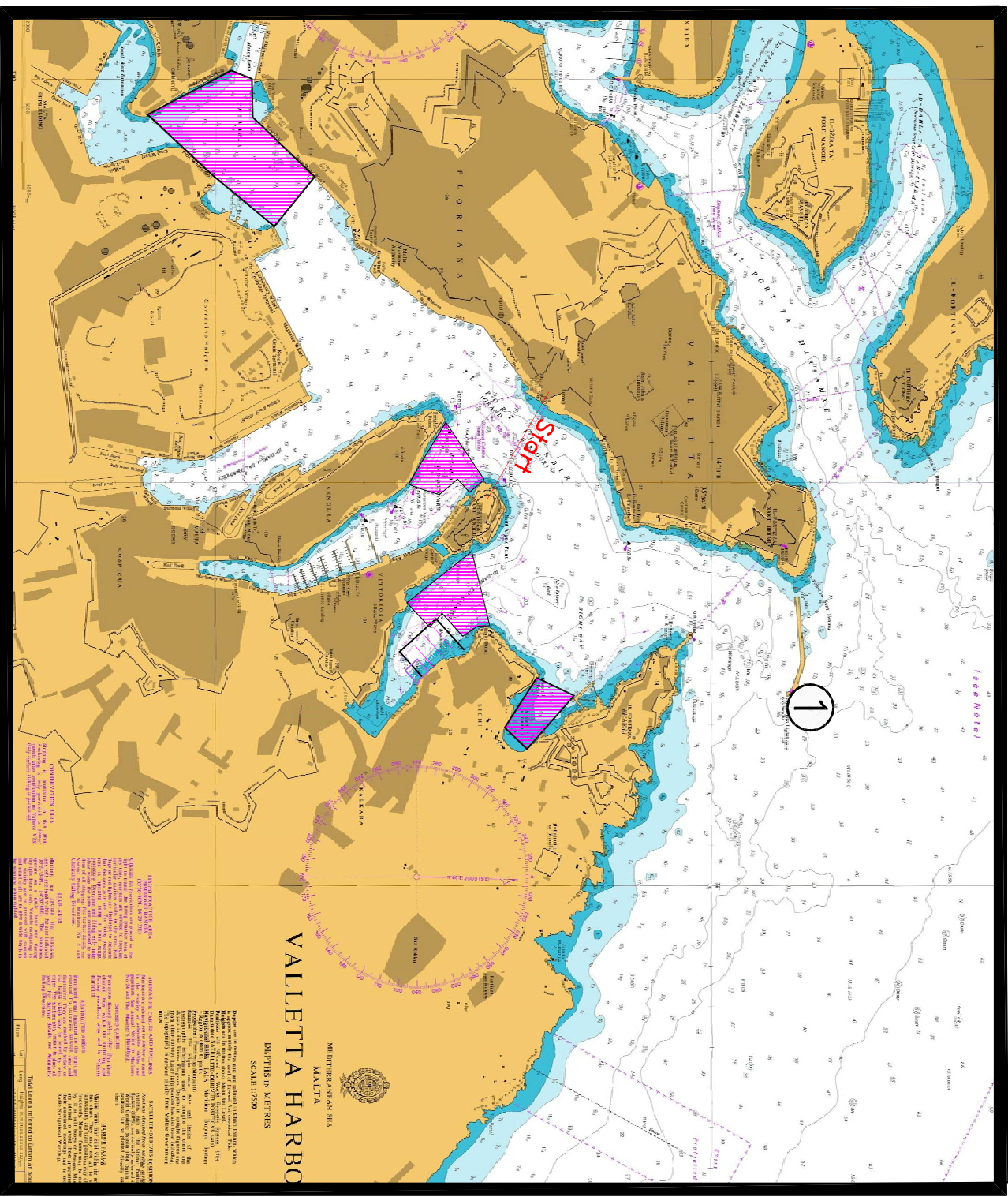
©British Crown Copyright 1970, 1983, 1986, 1988, 1999, 2000.
All rights reserved

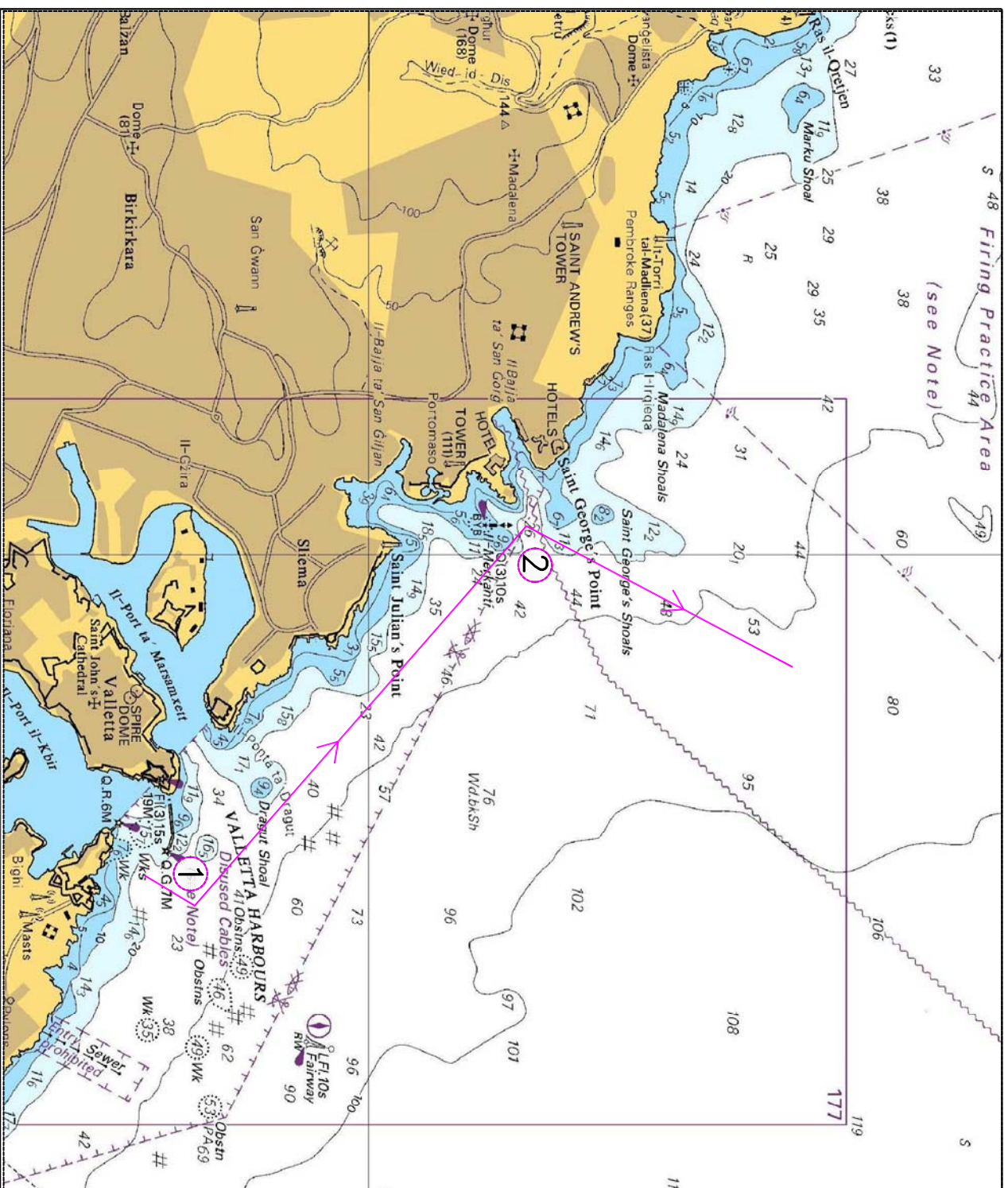
The UK Hydrographic Office makes the accompanying data available to Transport Malta under the terms and conditions of agreement MD 1427/020930/01.

DISCLAIMER

Whilst the UK Hydrographic Office has endeavoured to ensure that the material supplied is suitable for the purpose described, it accepts no liability (to the maximum extent permitted by law) for any damage or loss of any nature arising from its use. The material supplied is used entirely at the Recipient's own risk.

Chart 1





©British Crown Copyright 1970, 1983, 1986, 1988, 1999, 2000.
All rights reserved

The UK Hydrographic Office makes the accompanying data available to Transport Malta under the terms and conditions of agreement HD 1427/020930/01.

DISCLAIMER

Whilst the UK Hydrographic Office has endeavoured to ensure that the material supplied is suitable for the purpose described, it accepts no liability (to the maximum extent permitted by law) for any damage or loss of any nature arising from its use. The material supplied is used entirely at the Recipient's own risk.