



PORTS AND YACHTING DIRECTORATE

Transport Malta

Malta Transport Centre
Marsa, MRS 1917
Malta

Tel: (356) 2122 2203
Fax: (356) 2125 0365
Email: info.tm@transport.gov.mt

www.transport.gov.mt

LOCAL NOTICE TO MARINERS NO 75 of 2015

Our Ref: TM/PYD/71/14

18 September 2015

Removal of Vessels and Moorings Qajjenza, Birzebbuga.

The Ports and Yachting Directorate, Transport Malta, notifies mariners and owners of vessels, that the sea area as indicted in the attached chartlet is to remain clear of moorings and unobstructed to allow for the deployment of boom in the event of an incident at San Lucian Oil Company Terminal. Hence moorings situated in the area delineated by imaginary points A,B,C, D and the coastline, as shown on the attached Chart are to be removed immediately and no later than 30th September 2015.

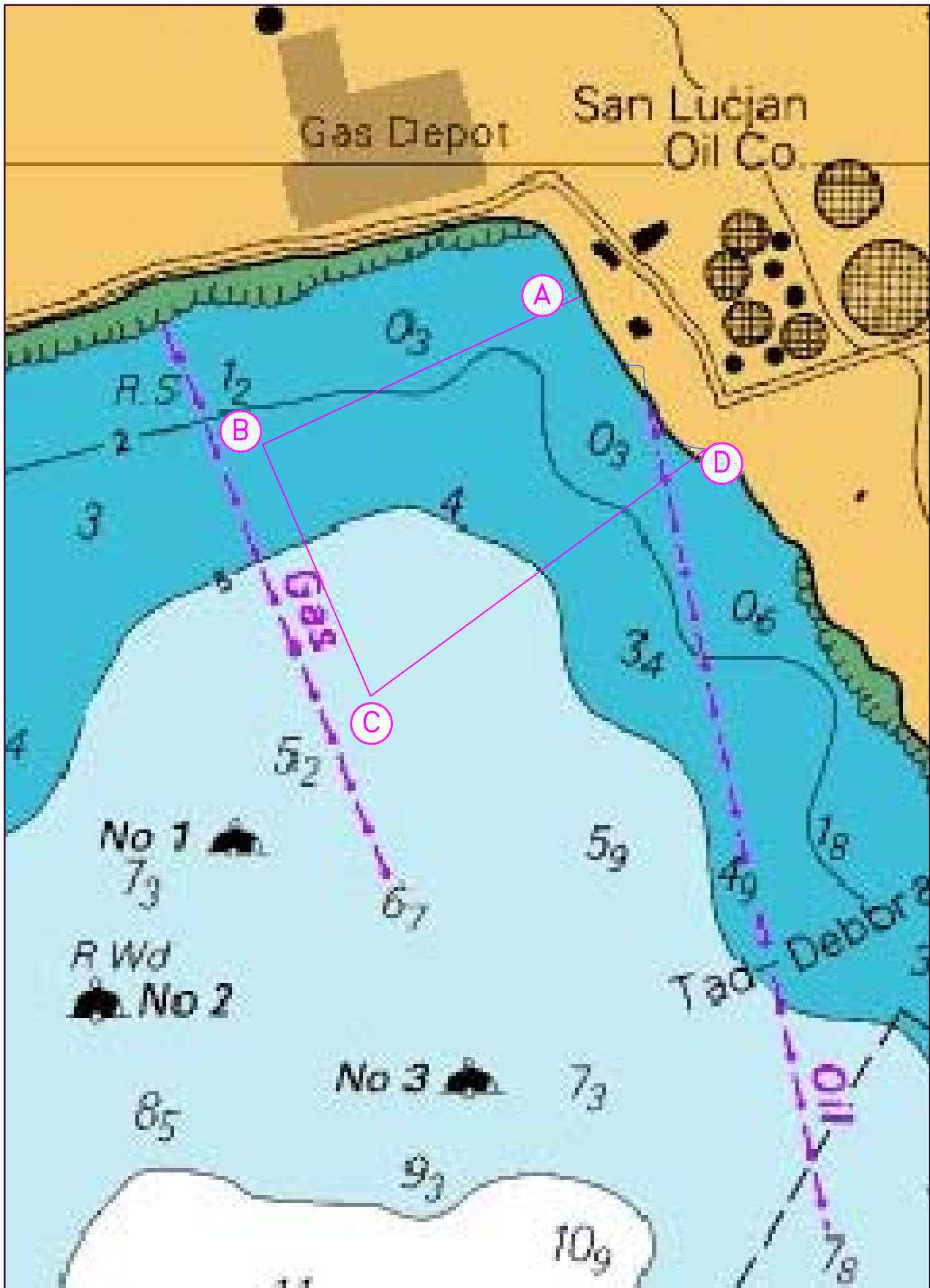
Any vessels, moorings and associated ground tackle that are left in this area after the stipulated date will be removed. No liability whatsoever will be accepted by the authority for any damage that may be caused while removing the said vessels, moorings and associated ground tackle.

Furthermore, mariners are reminded that it is prohibited to lay any moorings and ground tackle without the prior permission of the Authority and that approaches to marine terminals manoeuvring areas and fairways are to be kept clear at all times.

Failure to comply with the above directions may be subject to legal proceedings.

Chart affected BA 36

Positions are referred to WGS 84 Datum.



©British Crown Copyright 1970, 1983, 1986, 1988, 1999, 2000.
All rights reserved

The UK Hydrographic Office makes the accompanying data available to Malta Transport under the terms and conditions of agreement HD 1427/020930/01.

DISCLAIMER

Whilst the UK Hydrographic Office has endeavoured to ensure that the material supplied is suitable for the purpose described, it accepts no liability (to the maximum extent permitted by law) for any damage or loss of any nature arising from its use. The material supplied is used entirely at the Recipient's own risk.

Positions Refer To WGS 84 Datum		
Position	Latitude	Longitude
A	35° 49'.971	014° 32'.306
B	35° 49'.928	014° 32'.194
C	35° 49'.856	014° 32'.233
D	35° 49'.928	014° 32'.350