



**PORTS AND YACHTING DIRECTORATE**

**Transport Malta**

**LOCAL NOTICE TO MARINERS NO 68 of 2015**

Our Ref: TM/PYD/132/89

9 September 2015

Malta Transport Centre  
Marsa, MRS 1917  
Malta

Tel: (356) 2122 2203  
Fax: (356) 2125 0365  
Email: [info.tm@transport.gov.mt](mailto:info.tm@transport.gov.mt)

[www.transport.gov.mt](http://www.transport.gov.mt)

**Filming in different locations – Malta East and West Coast**

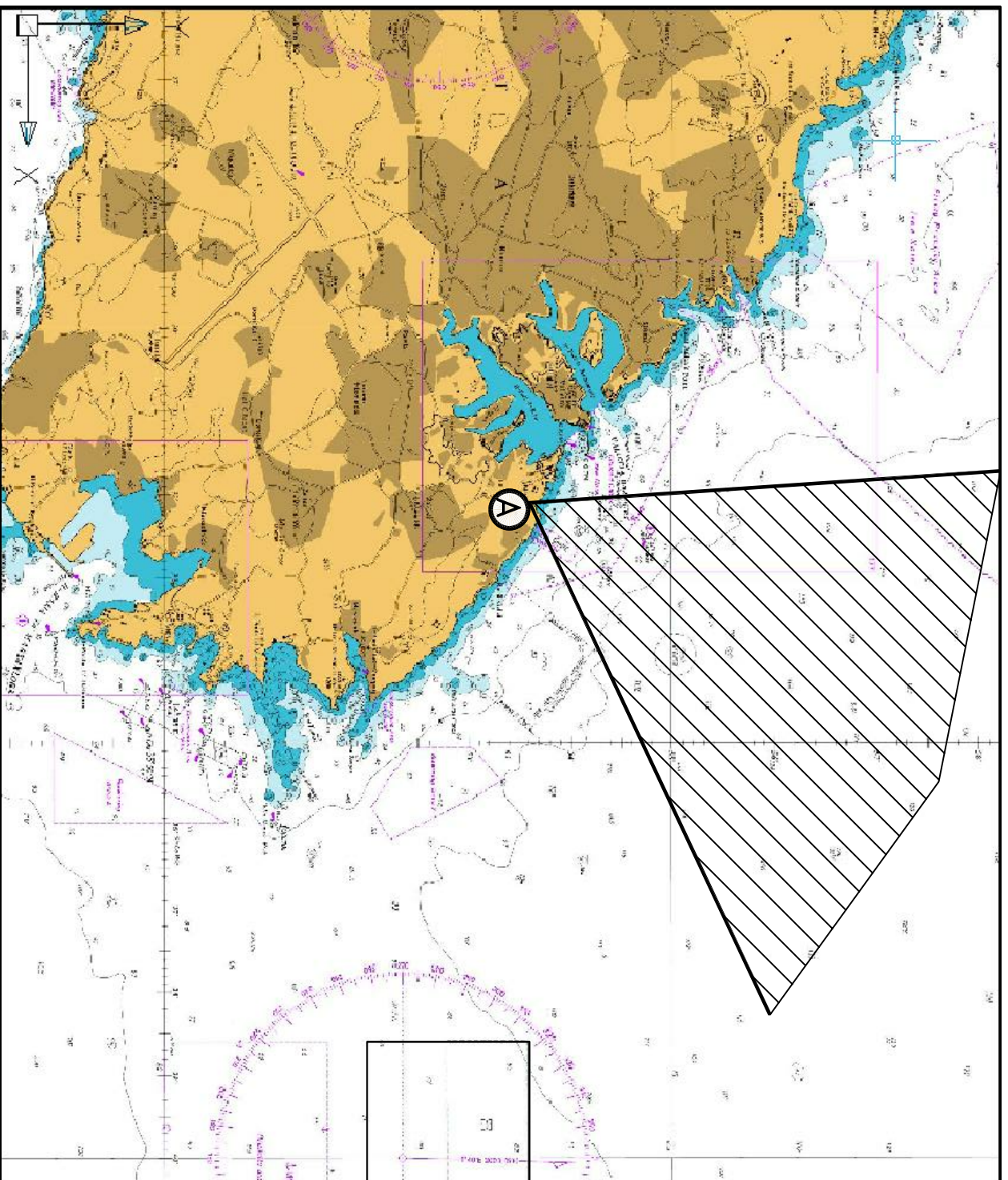
The Ports and Yachting Directorate, Transport Malta notifies all mariners that filming activities will take place on the East and West Coast of Malta between the 18<sup>th</sup> September 2015 and the 24<sup>th</sup> September 2015. Time of Filming will be between 0800 hours and 2000 hours. (Refer to charts attached)

- 1) The Main part of the filming will take place at the Malta Film Studios at Rinella and filming out to sea (from point "A" as shown on attached chart 1)  
Dates of filming are between 18<sup>th</sup> September 2015 and 22<sup>nd</sup> September 2015 weather permitting
- 2) Another part of the filming will take place from Cirkewwa South Quay and filming out to sea (from point "B" as shown on attached chart 2).  
Date of filming is 24<sup>th</sup> September 2015.

In view of the above, a clear horizon is required when filming on the above dates and times.

Mariners navigating in the areas indicated above, during filming, are requested to keep watch on VHF Channel 12 and cooperate with the crew and police in the area. They are to comply with instructions issued by Valletta Port Control (Valletta VTS).

Charts affected: BA 194, 2537 and 2538.



©British Crown Copyright 1970, 1983, 1986, 1988, 1999, 2000.  
All rights reserved

The UK Hydrographic Office makes the accompanying data  
available to Transport Malta under the terms and  
conditions of agreement HD 1427/020930/01.

#### DISCLAIMER

Whilst the UK Hydrographic Office has endeavoured to ensure  
that the material supplied is suitable for the purpose described,  
it accepts no liability (to the maximum extent permitted by law)  
for any damage or loss of any nature arising from its use.  
The material supplied is used entirely at the Recipient's own risk.

