



PORTS AND YACHTING DIRECTORATE

Transport Malta

## LOCAL NOTICE TO MARINERS No 62 of 2015

Our Ref: TM/PYD/95/96

19 August 2015

Malta Transport Centre  
Marsa, MRS 1917  
Malta

Tel: (356) 2122 2203  
Fax: (356) 2125 0365  
Email: [info.tm@transport.gov.mt](mailto:info.tm@transport.gov.mt)

[www.transport.gov.mt](http://www.transport.gov.mt)

### **Submarine Trenching Works at Sliema Creek, Marsamxett Harbour.**

The Ports and Yachting Directorate, Transport Malta, notifies mariners that submarine trenching works will be carried out in Sliema Creek, off Manoel Island Bridge in Marsamxett Harbour along an imaginary line AB as shown on attached chart.

The works are expected to commence on Monday 31<sup>st</sup> August 2015 and completed by end of November 2015.

Works will be undertaken from a rubble (aggregate) platform which will be laid from A to B as shown on attached chart, from where the works will be undertaken.

In view of the above all vessels, moorings and ground tackle that are in the vicinity of the indicated line AB must be removed immediately and not later than Sunday 30<sup>th</sup> August 2015, in order that the platform may be placed. Mariners are to note that the area between the rubble platform and the bridge will be closed off. Hence any vessels lying within are to be removed as well.

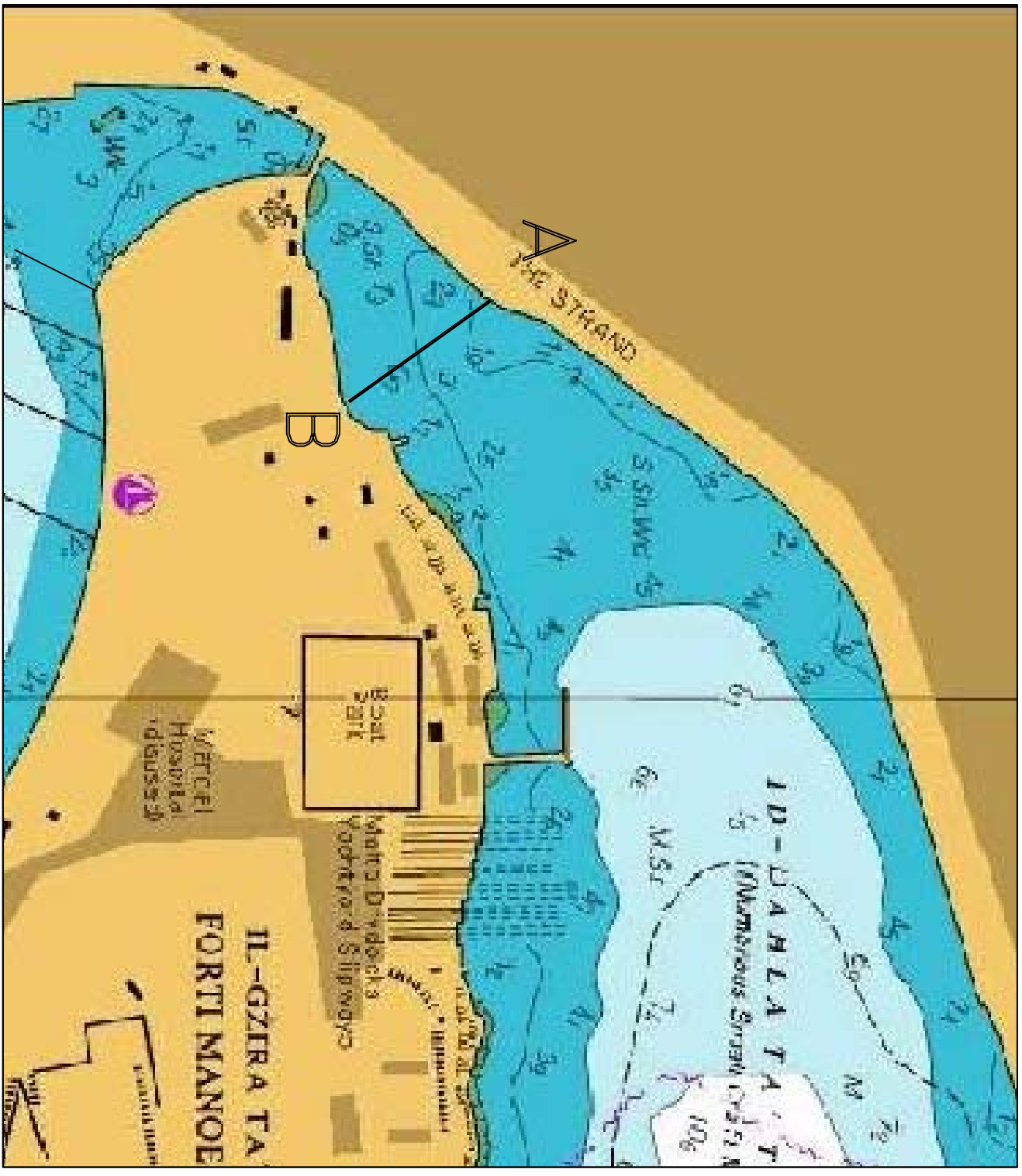
No liability will be accepted for any vessel, mooring and ground tackle that are left in the area and may be damaged after the stipulated date. Masters of vessels that lie in the vicinity of the area are to cooperate with the contractor to facilitate this work.

Further more mariners and operators of vessels are advised to keep a sharp lookout and proceed at very slow speed.

Instructions given by Valletta Port Control (VTS) on VHF Channel 12 are to be complied with.

Chart affected: BA 177

Positions referred to WGS 84 DATUM.



©British Crown Copyright 1970, 1983, 1986, 1988, 1999, 2000.  
All rights reserved

The UK Hydrographic Office makes the accompanying data available to Transport Malta under the terms and conditions of agreement HD 1427/020930/01.

**DISCLAIMER**

Whilst the UK Hydrographic Office has endeavoured to ensure that the material supplied is suitable for the purpose described, it accepts no liability (to the maximum extent permitted by law) for any damage or loss of any nature arising from its use. The material supplied is used entirely at the Recipient's own risk.